

META SQUARE Single-lever mixer pull-down with spray function - Brushed Dark Platinum

META SQUARE

33 870 861 Product version from 2/1/2023 to 10/30/2024



- 9-1/2" Projection
- Swiveling spout 360°
- Optional restricted swivel available with swivel limiter set 12 823 970 90
- Laminar and spray function
- Total height 15-1/4"
- 7-1/4" height to aerator/spout outlet
- 1-3/8" hole diameter
- 2 x pressure hose with 3/8" compression fitting
- 59" metal shower hose
- Sprayface with descaling system
- Water flow rate limited to max. 1.5 gpm
- lead-free
- Spray types can be changed while the water is running
- This product can help a building meet the requirements of Green Building Rating Systems, e.g. LEED®, BREEAM®, DGNB

(ADA)

Internal backflow preventer.

Push button locks into spray mode when pressed. To switch back to laminar flow the water must be turned off.

	Brushed Dark Platinum	33 870 861-99 0010
	Chrome	33 870 861-00 0010
	Brushed Platinum	33 870 861-06 0010
	Platinum	33 870 861-08 0010
	Durabronze (23kt Gold)	33 870 861-09 0010
	Dark Chrome	33 870 861-19 0010
	Brushed Durabronze (23kt Gold)	33 870 861-28 0010
	Matte Black	33 870 861-33 0010
	Brushed Bronze	33 870 861-42 0010
	Brushed Champagne (22kt Gold)	33 870 861-46 0010
	Champagne (22kt Gold)	33 870 861-47 0010
	Brushed Chrome	33 870 861-93 0010

Recommended article



Swivel limiter set -

12 823 970 90

Recommended article



**Soap dispenser without flange -
Brushed Dark Platinum**

82 424 970-99

Recommended article



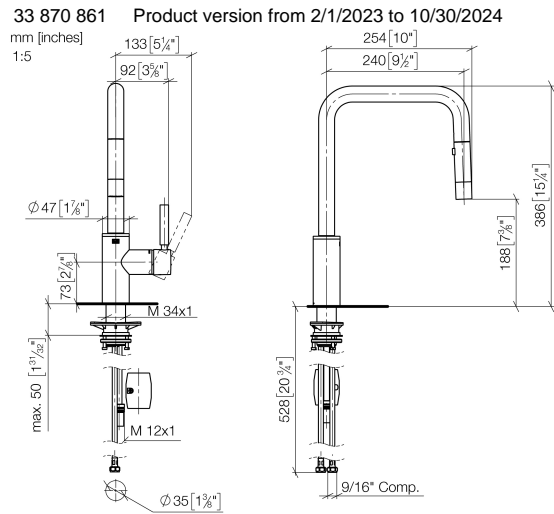
**AIR SWITCH operating button,
trim parts only - Brushed Dark
Platinum**

10 713 970-99



META SQUARE Single-lever mixer pull-down with spray function - Brushed Dark Platinum

META SQUARE



Codes & Standards

ADA	ASME A112.18.1	California Energy Commission (CEC)	cUPC
NSF372	NSF61		

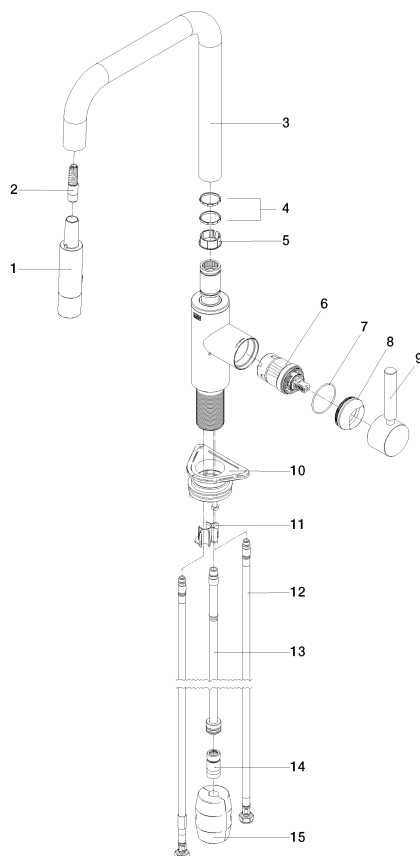
Certificates and sustainability

IAPMO_6397	IAPMO_N-4976	IAPMO_4976 (
------------	--------------	--------------	--

META SQUARE Single-lever mixer pull-down with spray function - Brushed Dark Platinum

META SQUARE

33 870 861 Product version from 2/1/2023 to 10/30/2024



Spare parts list

Number	Item Number	Designation	Number of units	Lead time
11	09 20 93 056 90	insert	1.00	2
4	09 28 10 160 90	ring	2.00	2
5	09 18 40 186 90	sleeve	1.00	2
1	90 12 11 148 00-99	shower	1.00	60
9	90 20 66 027 00-99	handle	1.00	20
14	90 24 03 253 01 90	adaptor	1.00	2
8	09 28 30 030-99	cover	1.00	20
13	04 28 20 067 00 90	pipe	1.00	2
2	04 30 02 120 00-85	hose	1.00	10
15	04 21 50 010 00 90	accessories	1.00	2
10	04 30 11 040 00 90	fixing set	1.00	2
3	90 28 22 308 00-99	spout	1.00	20
6	90 15 05 064 05 90	cartridge	1.00	2
12	04 30 04 103 00 90	hose	2.00	2
7	09 14 10 190 90	seal	1.00	2