

TARA ULTRA Single-lever mixer pull-down with spray function - Brushed Platinum

TARA ULTRA

33 870 875 Product version from 2/26/2015 to 10/30/2024



- 9-1/2" Projection
- Swiveling spout 360°
- Optional restricted swivel available with swivel limiter set 12 823 970 90
- Laminar and spray function
- Total height 19-5/8"
- 9-1/2" height to aerator/spout outlet
- 1-3/8" hole diameter
- 2 x pressure hose with 3/8" compression fitting
- 59" metal shower hose
- Sprayface with descaling system
- Water flow rate limited to max. 1.5 gpm
- lead-free
- Spray types can be changed while the water is running
- This product can help a building meet the requirements of Green Building Rating Systems, e.g. LEED®, BREEAM®, DGNB

(ADA)

Internal backflow preventer.

Push button locks into spray mode when pressed.
To switch back to laminar flow the water must be turned off.

	Brushed Platinum	33 870 875-06 0010
	Chrome	33 870 875-00 0010
	Platinum	33 870 875-08 0010
	Durabronze (23kt Gold)	33 870 875-09 0010
	Dark Chrome	33 870 875-19 0010
	Brushed Durabronze (23kt Gold)	33 870 875-28 0010
	Matte Black	33 870 875-33 0010
	Brushed Bronze	33 870 875-42 0010
	Brushed Champagne (22kt Gold)	33 870 875-46 0010
	Champagne (22kt Gold)	33 870 875-47 0010
	Brushed Chrome	33 870 875-93 0010
	Brushed Dark Platinum	33 870 875-99 0010

Recommended article

Swivel limiter set -

12 823 970 90



Recommended article

AIR SWITCH operating button, trim parts only - Brushed Platinum

10 713 970-06



Recommended article

Soap dispenser without flange - Brushed Platinum

82 424 970-06

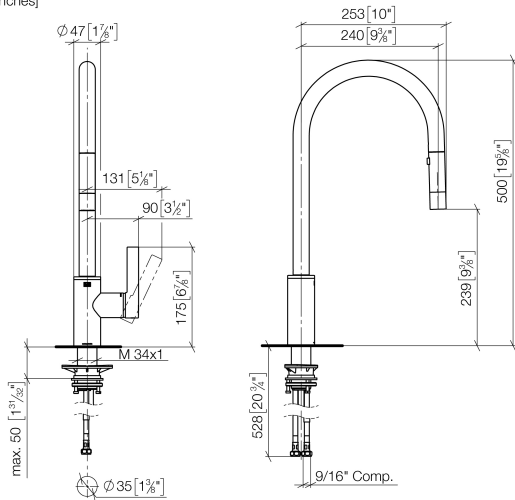




TARA ULTRA Single-lever mixer pull-down with spray function - Brushed Platinum

TARA ULTRA

33 870 875 Product version from 2/26/2015 to 10/30/2024
mm [inches]



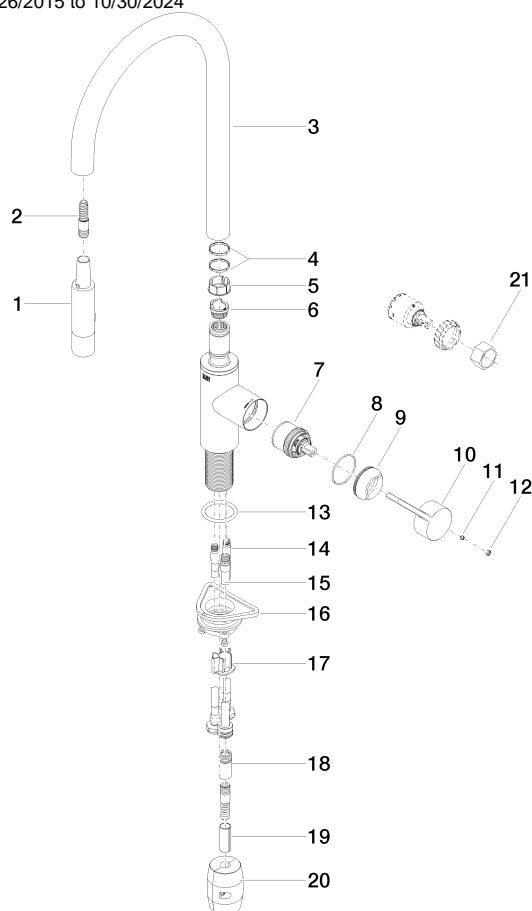
Codes & Standards

ADA	ASME A112.18.1	California Energy Commission (CEC)	cUPC
NSF372	NSF61		

Certificates and sustainability

IAPMO_N-4976 IAPMO_6397 IAPMO_4976 (

33 870 875 Product version from 2/26/2015 to 10/30/2024



Spare parts list

Number	Item Number	Designation	Number of units	Lead time
8	09 14 10 190 90	seal	1.00	2
2	04 30 02 120 00-85	hose	1.00	10
12	90 31 20 087 00-06	plug	1.00	10
20	04 21 50 010 00 90	accessories	1.00	2
6	09 30 11 203 90	ring	1.00	2
13	09 14 10 036 90	seal	1.00	2
4	09 28 10 160 90	ring	2.00	2
3	90 28 22 304 00-06	spout	1.00	10
17	09 20 93 056 90	insert	1.00	2
5	09 18 40 186 90	sleeve	1.00	2
15	04 28 20 067 00 90	pipe	1.00	2
9	09 28 30 030-06	cover	1.00	10
18	90 24 03 253 01 90	adaptor	1.00	2
10	09 20 87 020-06	handle	1.00	10
16	04 30 11 040 00 90	fixing set	1.00	2
19	09 30 03 038 90	hose	1.00	2
14	04 30 04 103 00 90	hose	2.00	2
21	90 30 09 031 00 90	key	1.00	2
1	90 12 11 148 00-06	shower	1.00	60
11	90 31 11 063 00 90	pin	1.00	2
7	90 15 05 064 05 90	cartridge	1.00	2