

TARA ULTRA Single-lever mixer pull-down with spray function - Brushed Dark Platinum

TARA ULTRA

33 870 875 Product version from 2/26/2015 to 10/30/2024



- 9-1/2" Projection
- Swiveling spout 360°
- Optional restricted swivel available with swivel limiter set 12 823 970 90
- Laminar and spray function
- Total height 19-5/8"
- 9-1/2" height to aerator/spout outlet
- 1-3/8" hole diameter
- 2 x pressure hose with 3/8" compression fitting
- 59" metal shower hose
- Sprayface with descaling system
- Water flow rate limited to max. 1.5 gpm
- lead-free
- Spray types can be changed while the water is running
- This product can help a building meet the requirements of Green Building Rating Systems, e.g. LEED®, BREEAM®, DGNB

(ADA)

Internal backflow preventer.

Push button locks into spray mode when pressed. To switch back to laminar flow the water must be turned off.

	Brushed Dark Platinum	33 870 875-99 0010
	Chrome	33 870 875-00 0010
	Brushed Platinum	33 870 875-06 0010
	Platinum	33 870 875-08 0010
	Durabronze (23kt Gold)	33 870 875-09 0010
	Dark Chrome	33 870 875-19 0010
	Brushed Durabronze (23kt Gold)	33 870 875-28 0010
	Matte Black	33 870 875-33 0010
	Brushed Bronze	33 870 875-42 0010
	Brushed Champagne (22kt Gold)	33 870 875-46 0010
	Champagne (22kt Gold)	33 870 875-47 0010
	Brushed Chrome	33 870 875-93 0010

Recommended article

Swivel limiter set -

12 823 970 90



Recommended article

AIR SWITCH operating button, trim parts only - Brushed Dark Platinum

10 713 970-99



Recommended article

Soap dispenser without flange - Brushed Dark Platinum

82 424 970-99

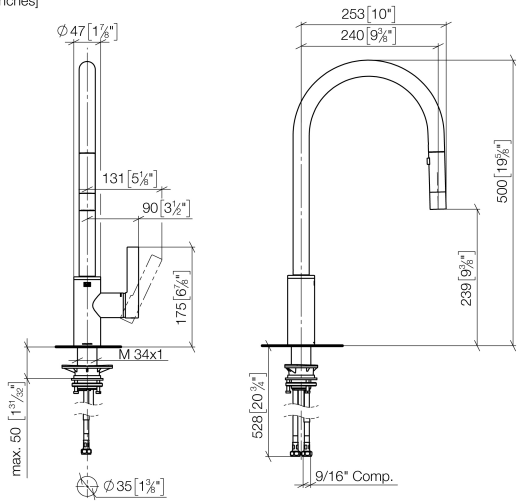




TARA ULTRA Single-lever mixer pull-down with spray function - Brushed Dark Platinum

TARA ULTRA

33 870 875 Product version from 2/26/2015 to 10/30/2024
mm [inches]



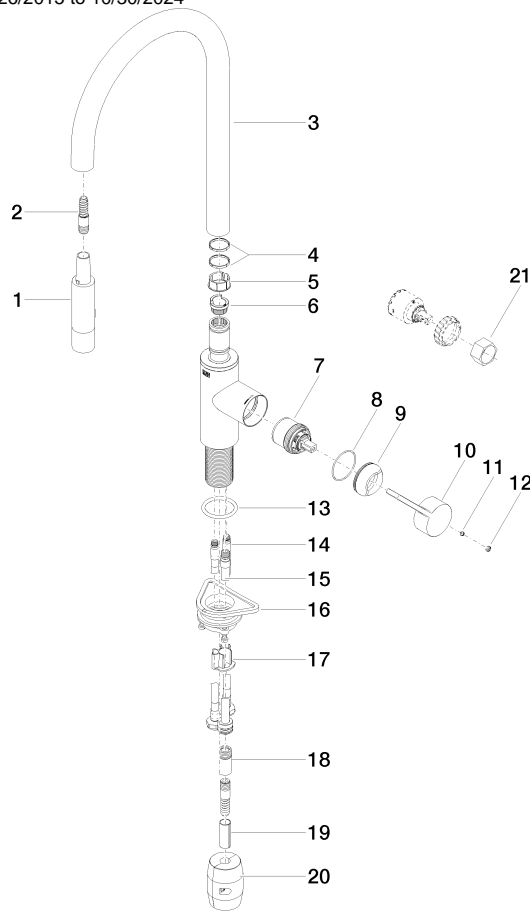
Codes & Standards

ADA	ASME A112.18.1	California Energy Commission (CEC)	cUPC
NSF372	NSF61		

Certificates and sustainability

IAPMO_N-4976	IAPMO_6397	IAPMO_4976 (
--------------	------------	--------------	--

33 870 875 Product version from 2/26/2015 to 10/30/2024



Spare parts list

Number	Item Number	Designation	Number of units	Lead time
8	09 14 10 190 90	seal	1.00	2
15	04 28 20 067 00 90	pipe	1.00	2
14	04 30 04 103 00 90	hose	2.00	2
13	09 14 10 036 90	seal	1.00	2
18	90 24 03 253 01 90	adaptor	1.00	2
19	09 30 03 038 90	hose	1.00	2
3	90 28 22 304 00-99	spout	1.00	20
10	09 20 87 020-99	handle	1.00	20
20	04 21 50 010 00 90	accessories	1.00	2
9	09 28 30 030-99	cover	1.00	20
6	09 30 11 203 90	ring	1.00	2
4	09 28 10 160 90	ring	2.00	2
16	04 30 11 040 00 90	fixing set	1.00	2
12	90 31 20 087 00-99	plug	1.00	20
5	09 18 40 186 90	sleeve	1.00	2
17	09 20 93 056 90	insert	1.00	2
2	04 30 02 120 00-85	hose	1.00	10
21	90 30 09 031 00 90	key	1.00	2
1	90 12 11 148 00-99	shower	1.00	60
11	90 31 11 063 00 90	pin	1.00	2
7	90 15 05 064 05 90	cartridge	1.00	2