

## TARA Single-lever mixer pull-down with spray function - Brushed Platinum

TARA

33 870 888 Product version from 2/1/2023 to 10/30/2024



- 9-1/2" Projection
- Swiveling spout 360°
- Optional restricted swivel available with swivel limiter set 12 823 970 90
- Laminar and spray function
- Total height 20"
- 9-3/4" height to aerator/spout outlet
- 1-3/8" hole diameter
- 2 x pressure hose with 3/8" compression fitting
- 59" metal shower hose
- Sprayface with descaling system
- Water flow rate limited to max. 1.5 gpm
- lead-free
- Spray types can be changed while the water is running
- This product can help a building meet the requirements of Green Building Rating Systems, e.g. LEED®, BREEAM®, DGNB

(ADA)

Internal backflow preventer.

Push button locks into spray mode when pressed.  
To switch back to laminar flow the water must be turned off.

	Brushed Platinum	33 870 888-06 0010
	Chrome	33 870 888-00 0010
	Platinum	33 870 888-08 0010
	Durabronze (23kt Gold)	33 870 888-09 0010
	Dark Chrome	33 870 888-19 0010
	Brushed Durabronze (23kt Gold)	33 870 888-28 0010
	Matte Black	33 870 888-33 0010
	Brushed Bronze	33 870 888-42 0010
	Brushed Champagne (22kt Gold)	33 870 888-46 0010
	Champagne (22kt Gold)	33 870 888-47 0010
	Brushed Chrome	33 870 888-93 0010
	Brushed Dark Platinum	33 870 888-99 0010

### Recommended article

**Swivel limiter set -**

12 823 970 90



### Recommended article

**AIR SWITCH operating button, trim parts only - Brushed Platinum**

10 713 970-06



### Recommended article

**Soap dispenser with flange - Brushed Platinum**

82 444 970-06

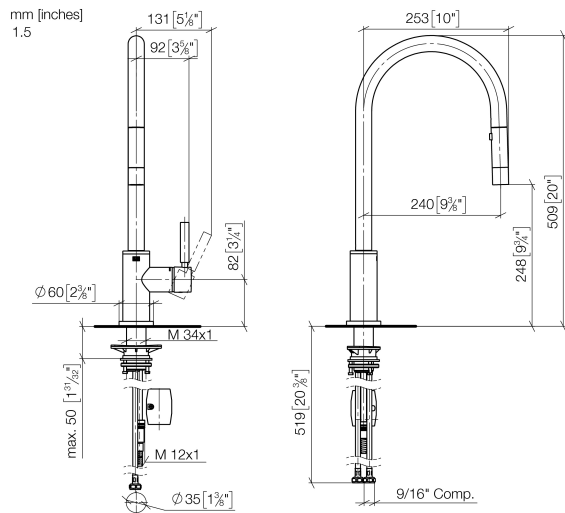




TARA Single-lever mixer pull-down with spray function - Brushed Platinum

TARA

33 870 888 Product version from 2/1/2023 to 10/30/2024

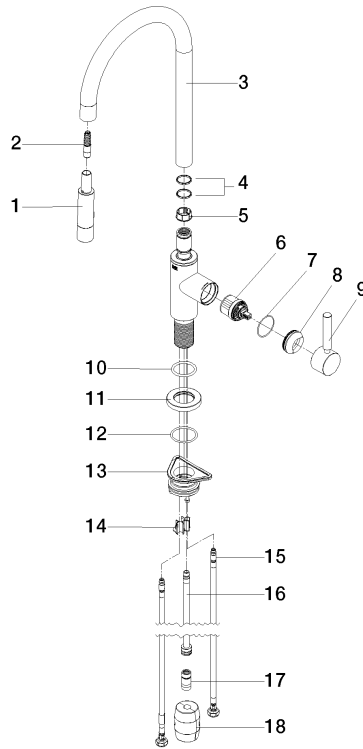


Codes & Standards

ADA	ASME A112.18.1	California Energy Commission (CEC)	cUPC
NSF372	NSF61		

Certificates and sustainability

IAPMO_6397	IAPMO_N-4976	IAPMO_4976 (
------------	--------------	--------------



## Spare parts list

Number	Item Number	Designation	Number of units	Lead time
3	90 28 22 304 00-06	spout	1.00	10
2	04 30 02 120 00-85	hose	1.00	10
5	09 18 40 186 90	sleeve	1.00	2
4	09 28 10 160 90	ring	2.00	2
9	90 20 66 027 00-06	handle	1.00	10
7	09 14 10 190 90	seal	1.00	2
1	90 12 11 148 00-06	shower	1.00	60
12	09 14 10 050 90	seal	1.00	2
14	09 20 93 056 90	insert	1.00	2
8	09 28 30 030-06	cover	1.00	10
11	90 27 22 047 00-06	rosette	1.00	-
Spare part can no longer be ordered, please order the replacement item				
18	04 21 50 010 00 90	accessories	1.00	2
17	90 24 03 253 01 90	adaptor	1.00	2
10	09 14 10 036 90	seal	1.00	2
16	04 28 20 067 00 90	pipe	1.00	2
13	04 30 11 040 00 90	fixing set	1.00	2
15	04 30 04 103 00 90	hose	2.00	2
6	90 15 05 064 05 90	cartridge	1.00	2