

TARA Single-lever mixer pull-down with spray function - Dark Chrome

33 870 888 Product version from 2/1/2023



- 9-1/2" Projection
- Swiveling spout 360°
- Optional restricted swivel available with swivel limiter set 12 823 970 90
- Laminar and spray function
- Total height 20"
- 9-3/4" height to aerator/spout outlet
- 1-3/8" hole diameter
- 2 x pressure hose with 3/8" compression fitting
- 59" metal shower hose
- Sprayface with descaling system
- Water flow rate limited to max. 1.5 gpm
- lead-free
- Spray types can be changed while the water is running
- This product can help a building meet the requirements of Green Building Rating Systems, e.g. LEED®, BREEAM®, DGNB

(ADA)

Internal backflow preventer.

Push button locks into spray mode when pressed.
To switch back to laminar flow the water must be turned off.

	Dark Chrome	33 870 888-19 0010
	Chrome	33 870 888-00 0010
	Brushed Platinum	33 870 888-06 0010
	Platinum	33 870 888-08 0010
	Durabrand (23kt Gold)	33 870 888-09 0010
	Brushed Durabrand (23kt Gold)	33 870 888-28 0010
	Matte Black	33 870 888-33 0010
	Brushed Bronze	33 870 888-42 0010
	Brushed Champagne (22kt Gold)	33 870 888-46 0010
	Champagne (22kt Gold)	33 870 888-47 0010
	Brushed Chrome	33 870 888-93 0010
	Brushed Dark Platinum	33 870 888-99 0010

Recommended article



Swivel limiter set -

12 823 970 90

Recommended article



**AIR SWITCH operating button,
trim parts only - Dark Chrome**

10 713 970-19

Recommended article



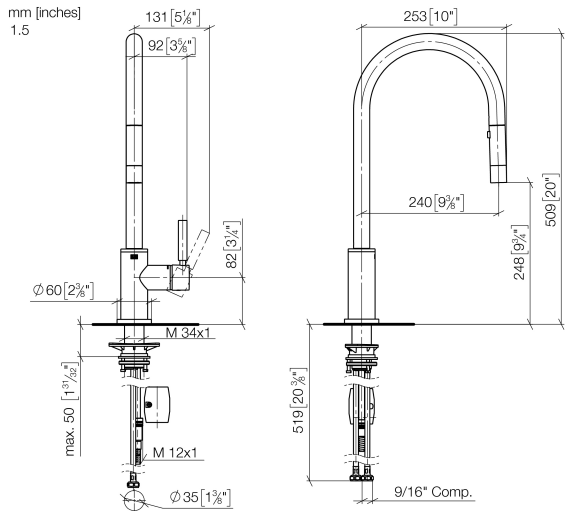
**Soap dispenser with flange - Dark
Chrome**

82 444 970-19



TARA Single-lever mixer pull-down with spray function - Dark Chrome

33 870 888 Product version from 2/1/2023



Flow rate chart



Codes & Standards

ASME A112.18.1	California Energy Commission (CEC)	cUPC	NSF372
NSF61			



TARA Single-lever mixer pull-down with spray function - Dark Chrome

33 870 888 Product version from 2/1/2023

Certificates

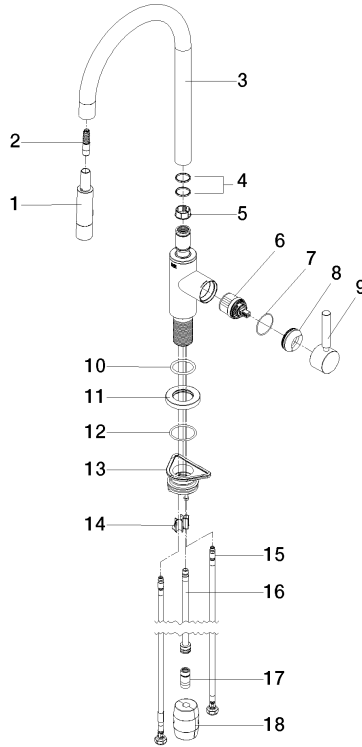
IAPMO_6397

IAPMO_N-4976

IAPMO_4976 (

TARA Single-lever mixer pull-down with spray function - Dark Chrome

33 870 888 Product version from 2/1/2023



Spare parts list

Number	Item Number	Designation	Number of units	Lead time
1	90 12 11 148 00-19	shower	1	20
2	04 30 02 120 00-85	hose	1	10
3	90 28 22 304 00-19	spout	1	20
4	09 28 10 160 90	ring	2	2
5	09 18 40 186 90	sleeve	1	2
6	90 15 05 064 05 90	cartridge	1	2
7	09 14 10 190 90	seal	1	2
8	09 28 30 030-19	cover	1	60
9	90 20 66 027 00-19	handle	1	20
10	09 14 10 036 90	seal	1	2
11	90 27 22 047 00-19	rosette	1	-
Spare part can no longer be ordered, please order the replacement item				
12	09 14 10 050 90	seal	1	2
13	04 30 11 040 00 90	fixing set	1	2
14	09 20 93 056 90	insert	1	2
15	04 30 04 103 00 90	hose	2	2
16	04 28 20 067 00 90	pipe	1	2
17	90 24 03 253 01 90	adaptor	1	2
18	04 21 50 010 00 90	accessories	1	2