

TARA Single-lever mixer pull-down with spray function - Brushed Durabronze (23kt Gold)

TARA

33 870 888 Product version from 2/1/2023 to 10/30/2024



- 9-1/2" Projection
- Swiveling spout 360°
- Optional restricted swivel available with swivel limiter set 12 823 970 90
- Laminar and spray function
- Total height 20"
- 9-3/4" height to aerator/spout outlet
- 1-3/8" hole diameter
- 2 x pressure hose with 3/8" compression fitting
- 59" metal shower hose
- Sprayface with descaling system
- Water flow rate limited to max. 1.5 gpm
- lead-free
- Spray types can be changed while the water is running
- This product can help a building meet the requirements of Green Building Rating Systems, e.g. LEED®, BREEAM®, DGNB

(ADA)

Internal backflow preventer.

Push button locks into spray mode when pressed. To switch back to laminar flow the water must be turned off.

	Brushed Durabronze (23kt Gold)	33 870 888-28 0010
	Chrome	33 870 888-00 0010
	Brushed Platinum	33 870 888-06 0010
	Platinum	33 870 888-08 0010
	Durabronze (23kt Gold)	33 870 888-09 0010
	Dark Chrome	33 870 888-19 0010
	Matte Black	33 870 888-33 0010
	Brushed Bronze	33 870 888-42 0010
	Brushed Champagne (22kt Gold)	33 870 888-46 0010
	Champagne (22kt Gold)	33 870 888-47 0010
	Brushed Chrome	33 870 888-93 0010
	Brushed Dark Platinum	33 870 888-99 0010

Recommended article

Swivel limiter set -

12 823 970 90



Recommended article

**Soap dispenser with flange -
Brushed Durabronze (23kt Gold)**

82 444 970-28



Recommended article

**AIR SWITCH operating button,
trim parts only - Brushed
Durabronze (23kt Gold)**

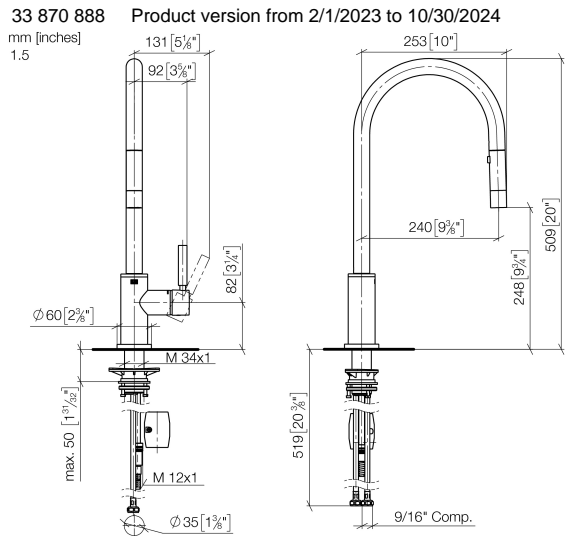
10 713 970-28





TARA Single-lever mixer pull-down with spray function - Brushed Durabronz
(23kt Gold)

TARA



Codes & Standards

ADA	California Energy Commission (CEC)	NSF372	NSF61
-----	--	--------	-------

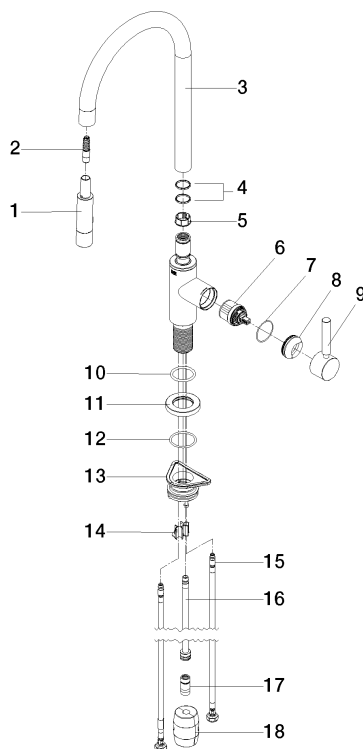
Certificates and sustainability

IAPMO_6397 IAPMO_N-4976

TARA Single-lever mixer pull-down with spray function - Brushed Durabrass (23kt Gold)

TARA

33 870 888 Product version from 2/1/2023 to 10/30/2024



Spare parts list

Number	Item Number	Designation	Number of units	Lead time
2	04 30 02 120 00-85	hose	1.00	10
3	90 28 22 304 00-28	spout	1.00	20
4	09 28 10 160 90	ring	2.00	2
5	09 18 40 186 90	sleeve	1.00	2
9	90 20 66 027 00-28	handle	1.00	20
10	09 14 10 036 90	seal	1.00	2
12	09 14 10 050 90	seal	1.00	2
11	90 27 22 047 00-28	rosette	1.00	-
Spare part can no longer be ordered, please order the replacement item				
15	04 30 04 103 00 90	hose	2.00	2
13	04 30 11 040 00 90	fixing set	1.00	2
8	09 28 30 030-28	cover	1.00	20
1	90 12 11 148 00-28	shower	1.00	60
7	09 14 10 190 90	seal	1.00	2
17	90 24 03 253 01 90	adaptor	1.00	2
14	09 20 93 056 90	insert	1.00	2
18	04 21 50 010 00 90	accessories	1.00	2
16	04 28 20 067 00 90	pipe	1.00	2
6	90 15 05 064 05 90	cartridge	1.00	2