

TARA Single-lever mixer pull-down with spray function - Brushed Dark Platinum

33 870 888 Product version from 2/1/2023



- 9-1/2" Projection
- Swiveling spout 360°
- Optional restricted swivel available with swivel limiter set 12 823 970 90
- Laminar and spray function
- Total height 20"
- 9-3/4" height to aerator/spout outlet
- 1-3/8" hole diameter
- 2 x pressure hose with 3/8" compression fitting
- 59" metal shower hose
- Sprayface with descaling system
- Water flow rate limited to max. 1.5 gpm
- lead-free
- Spray types can be changed while the water is running
- This product can help a building meet the requirements of Green Building Rating Systems, e.g. LEED®, BREEAM®, DGNB

(ADA)

Internal backflow preventer.

Push button locks into spray mode when pressed. To switch back to laminar flow the water must be turned off.

	Brushed Dark Platinum	33 870 888-99 0010
	Chrome	33 870 888-00 0010
	Brushed Platinum	33 870 888-06 0010
	Platinum	33 870 888-08 0010
	Durabrand (23kt Gold)	33 870 888-09 0010
	Dark Chrome	33 870 888-19 0010
	Brushed Durabrand (23kt Gold)	33 870 888-28 0010
	Matte Black	33 870 888-33 0010
	Brushed Bronze	33 870 888-42 0010
	Brushed Champagne (22kt Gold)	33 870 888-46 0010
	Champagne (22kt Gold)	33 870 888-47 0010
	Brushed Chrome	33 870 888-93 0010

Recommended article



Swivel limiter set -

12 823 970 90

Recommended article



AIR SWITCH operating button, trim parts only - Brushed Dark Platinum

10 713 970-99

Recommended article



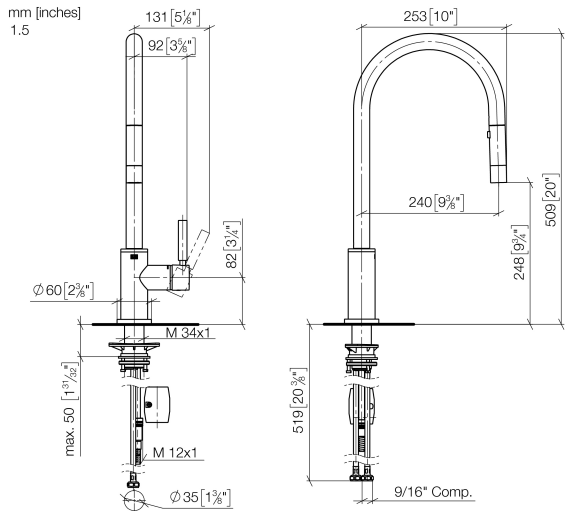
Soap dispenser with flange - Brushed Dark Platinum

82 444 970-99



TARA Single-lever mixer pull-down with spray function - Brushed Dark Platinum

33 870 888 Product version from 2/1/2023



Flow rate chart



Codes & Standards

ASME A112.18.1	California Energy Commission (CEC)	cUPC	NSF372
NSF61			



TARA Single-lever mixer pull-down with spray function - Brushed Dark Platinum

33 870 888 Product version from 2/1/2023

Certificates

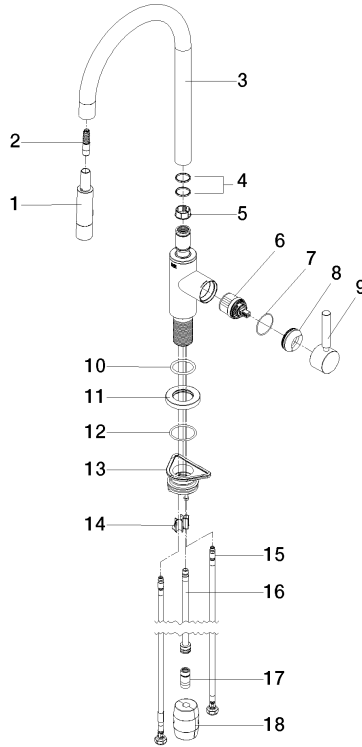
IAPMO_6397

IAPMO_N-4976

IAPMO_4976 (

TARA Single-lever mixer pull-down with spray function - Brushed Dark Platinum

33 870 888 Product version from 2/1/2023



Spare parts list

Number	Item Number	Designation	Number of units	Lead time
1	90 12 11 148 00-99	shower	1	20
2	04 30 02 120 00-85	hose	1	10
3	90 28 22 304 00-99	spout	1	20
4	09 28 10 160 90	ring	2	2
5	09 18 40 186 90	sleeve	1	2
6	90 15 05 064 05 90	cartridge	1	2
7	09 14 10 190 90	seal	1	2
8	09 28 30 030-99	cover	1	20
9	90 20 66 027 00-99	handle	1	20
10	09 14 10 036 90	seal	1	2
11	90 27 22 047 00-99	rosette	1	-
Spare part can no longer be ordered, please order the replacement item				
12	09 14 10 050 90	seal	1	2
13	04 30 11 040 00 90	fixing set	1	2
14	09 20 93 056 90	insert	1	2
15	04 30 04 103 00 90	hose	2	2
16	04 28 20 067 00 90	pipe	1	2
17	90 24 03 253 01 90	adaptor	1	2
18	04 21 50 010 00 90	accessories	1	2