

SYNC Single-lever mixer pull-down with spray function - Brushed Platinum

SYNC

33 870 895 Product version from 2/26/2015 to 10/30/2024



- 9-1/2" Projection
- Swiveling spout 360°
- Optional restricted swivel available with swivel limiter set 12 821 970 90
- Laminar and spray function
- Total height 17-1/2"
- 9-1/2" height to aerator/spout outlet
- 1-3/8" hole diameter
- 2 x pressure hose with 3/8" compression fitting
- 59" metal shower hose
- Sprayface with descaling system
- Water flow rate limited to max. 1.5 gpm
- lead-free
- Spray types can be changed while the water is running
- This product can help a building meet the requirements of Green Building Rating Systems, e.g. LEED®, BREEAM®, DGNB

(ADA)

Internal backflow preventer.

Push button locks into spray mode when pressed.
To switch back to laminar flow the water must be turned off.

	Brushed Platinum	33 870 895-06 0010
	Chrome	33 870 895-00 0010
	Platinum	33 870 895-08 0010
	Durabrass (23kt Gold)	33 870 895-09 0010
	Dark Chrome	33 870 895-19 0010
	Brushed Durabrass (23kt Gold)	33 870 895-28 0010
	Matte Black	33 870 895-33 0010
	Brushed Bronze	33 870 895-42 0010
	Brushed Champagne (22kt Gold)	33 870 895-46 0010
	Champagne (22kt Gold)	33 870 895-47 0010
	Brushed Chrome	33 870 895-93 0010
	Brushed Dark Platinum	33 870 895-99 0010

Recommended article

Swivel limiter set -

12 821 970 90



Recommended article

AIR SWITCH operating button, trim parts only - Brushed Platinum

10 713 970-06



Recommended article

Soap dispenser without flange - Brushed Platinum

82 424 970-06

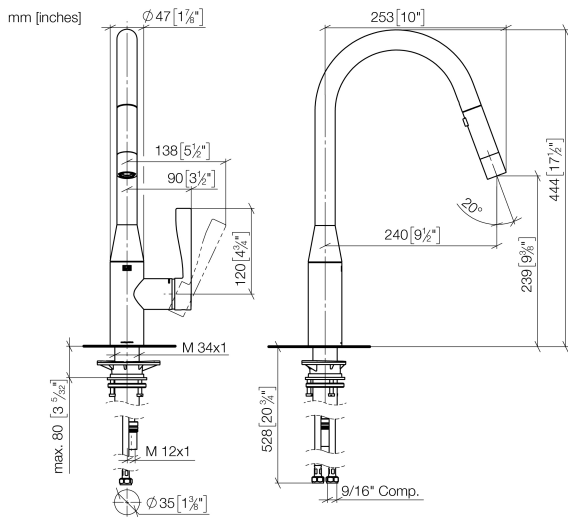




SYNC Single-lever mixer pull-down with spray function - Brushed Platinum

SYNC

33 870 895 Product version from 2/26/2015 to 10/30/2024

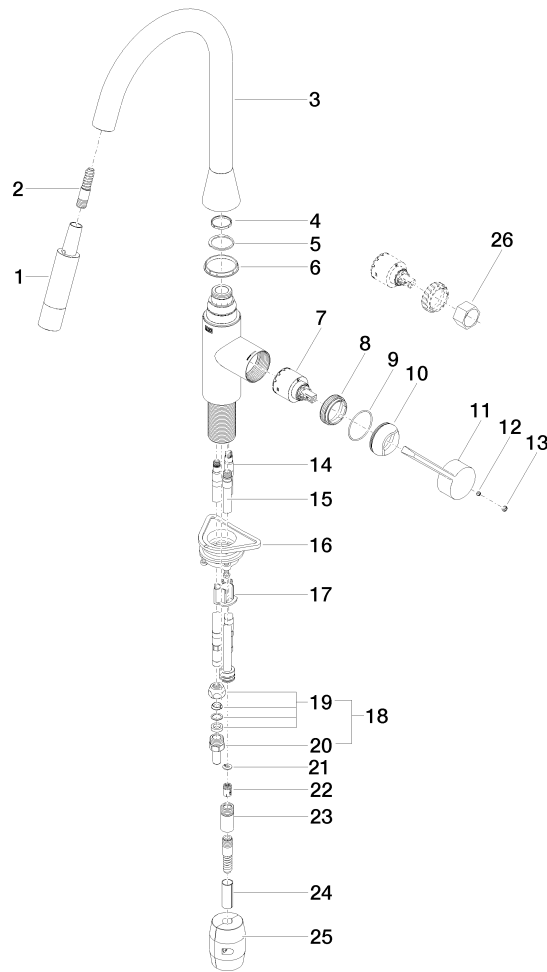


Codes & Standards

ADA	ASME A112.18.1	California Energy Commission (CEC)	cUPC
NSF372	NSF61		

Certificates and sustainability

IAPMO_N-4976	IAPMO_6397	IAPMO_4976 (
--------------	------------	--------------



SYNC Single-lever mixer pull-down with spray function - Brushed Platinum

SYNC

33 870 895 Product version from 2/26/2015 to 10/30/2024

Spare parts list

Number	Item Number	Designation	Number of units	Lead time
11	09 20 89 020-06	handle	1.00	10
9	09 14 10 190 90	seal	1.00	2
14	04 30 04 098 00 90	hose	2.00	60
3	90 28 22 302 00-06	spout	1.00	10
4	09 28 10 160 90	ring	1.00	2
15	04 28 20 066 00 90	pipe	1.00	2
25	04 21 50 010 00 90	accessories	1.00	2
20	09 24 04 222 10-06	adaptor	2.00	-
Spare part can no longer be ordered, please order the replacement item				
18	04 24 04 222 00-06	adaptor	2.00	-
Spare part can no longer be ordered, please order the replacement item				
17	09 20 93 056 90	insert	1.00	2
2	04 30 02 120 00-85	hose	1.00	10
16	04 30 11 040 00 90	fixing set	1.00	2
21	09 16 01 023 90	ring	1.00	2
6	09 28 10 161 90	ring	1.00	2
23	90 24 03 253 00 90	adaptor	1.00	2
19	04 23 30 031 01-07	threaded connector	2.00	60
13	90 31 20 087 00-06	plug	1.00	10
22	09 23 01 096 90	back-flow preventer	1.00	2
10	09 28 30 030-06	cover	1.00	10
8	09 23 10 072 90	nut	1.00	60
5	09 28 10 162 90	ring	1.00	2
24	09 30 03 038 90	hose	1.00	2
1	90 12 11 148 00-06	shower	1.00	60
12	90 31 11 063 00 90	pin	1.00	2
26	90 30 09 031 00 90	key	1.00	2
7	90 15 05 046 05 90	cartridge	1.00	2