

SYNC Single-lever mixer pull-down with spray function - Platinum

33 870 895 Product version from 2/26/2015



- 9-1/2" Projection
- Swiveling spout 360°
- Optional restricted swivel available with swivel limiter set 12 821 970 90
- Laminar and spray function
- Total height 17-1/2"
- 9-1/2" height to aerator/spout outlet
- 1-3/8" hole diameter
- 2 x pressure hose with 3/8" compression fitting
- 59" metal shower hose
- Sprayface with descaling system
- Water flow rate limited to max. 1.5 gpm
- lead-free
- Spray types can be changed while the water is running
- This product can help a building meet the requirements of Green Building Rating Systems, e.g. LEED®, BREEAM®, DGNB

(ADA)

Internal backflow preventer.

Push button locks into spray mode when pressed. To switch back to laminar flow the water must be turned off.

	Platinum	33 870 895-08 0010
	Chrome	33 870 895-00 0010
	Brushed Platinum	33 870 895-06 0010
	Durabronze (23kt Gold)	33 870 895-09 0010
	Dark Chrome	33 870 895-19 0010
	Brushed Durabronze (23kt Gold)	33 870 895-28 0010
	Matte Black	33 870 895-33 0010
	Brushed Bronze	33 870 895-42 0010
	Brushed Champagne (22kt Gold)	33 870 895-46 0010
	Champagne (22kt Gold)	33 870 895-47 0010
	Brushed Chrome	33 870 895-93 0010
	Brushed Dark Platinum	33 870 895-99 0010

Recommended article

Swivel limiter set -

12 821 970 90



Recommended article

AIR SWITCH operating button, trim parts only - Platinum

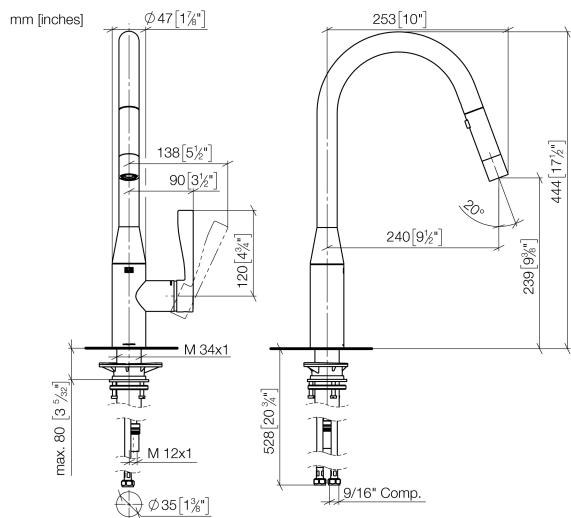
10 713 970-08





SYNC Single-lever mixer pull-down with spray function - Platinum

33 870 895 Product version from 2/26/2015



Flow rate chart



Codes & Standards

ADA	ASME A112.18.1	ASME A112.18.1/CSA B125.1	California Energy Commission (CEC)
cUPC	NSF/ANSI 372	NSF/ANSI/CAN 61	NSF372
NSF61			



SYNC Single-lever mixer pull-down with spray function - Platinum

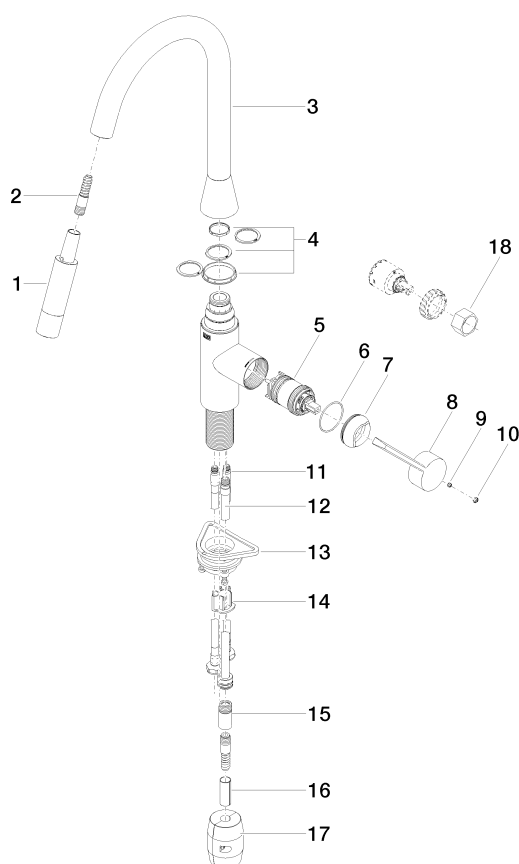
33 870 895 Product version from 2/26/2015

Certificates

IAPMO_N-4976 IAPMO_6397 IAPMO_4976 (

SYNC Single-lever mixer pull-down with spray function - Platinum

33 870 895 Product version from 2/26/2015



Spare parts list

Number	Item Number	Designation	Number of units	Lead time
1	90 12 11 148 00-08	shower	1	60
2	04 30 02 120 00-85	hose	1	10
3	90 28 22 302 00-08	spout	1	40
4	12 821 970 90	Swivel limiter set -	1	2
5	90 15 05 064 05 90	cartridge	1	2
6	09 14 10 190 90	seal	1	2
7	09 28 30 030-08	cover	1	40
8	09 20 89 020-08	handle	1	40
9	90 31 11 063 00 90	pin	1	2
10	90 31 20 087 00-08	plug	1	40
11	04 30 04 103 00 90	hose	2	2
12	04 28 20 067 00 90	pipe	1	2
13	04 30 11 040 00 90	fixing set	1	2
14	09 20 93 056 90	insert	1	2
15	90 24 03 253 01 90	adaptor	1	2
16	09 30 03 038 90	hose	1	2
17	04 21 50 010 00 90	accessories	1	2
18	90 30 09 031 00 90	key	1	2