

## SYNC Single-lever mixer pull-down with spray function - Brushed Dark Platinum

SYNC

33 870 895 Product version from 2/26/2015 to 10/30/2024



- 9-1/2" Projection
- Swiveling spout 360°
- Optional restricted swivel available with swivel limiter set 12 821 970 90
- Laminar and spray function
- Total height 17-1/2"
- 9-1/2" height to aerator/spout outlet
- 1-3/8" hole diameter
- 2 x pressure hose with 3/8" compression fitting
- 59" metal shower hose
- Sprayface with descaling system
- Water flow rate limited to max. 1.5 gpm
- lead-free
- Spray types can be changed while the water is running
- This product can help a building meet the requirements of Green Building Rating Systems, e.g. LEED®, BREEAM®, DGNB

(ADA)

Internal backflow preventer.

Push button locks into spray mode when pressed. To switch back to laminar flow the water must be turned off.

	Brushed Dark Platinum	33 870 895-99 0010
	Chrome	33 870 895-00 0010
	Brushed Platinum	33 870 895-06 0010
	Platinum	33 870 895-08 0010
	Durabrand (23kt Gold)	33 870 895-09 0010
	Dark Chrome	33 870 895-19 0010
	Brushed Durabrand (23kt Gold)	33 870 895-28 0010
	Matte Black	33 870 895-33 0010
	Brushed Bronze	33 870 895-42 0010
	Brushed Champagne (22kt Gold)	33 870 895-46 0010
	Champagne (22kt Gold)	33 870 895-47 0010
	Brushed Chrome	33 870 895-93 0010

### Recommended article

**Swivel limiter set -**

12 821 970 90



### Recommended article

**AIR SWITCH operating button, trim parts only - Brushed Dark Platinum**

10 713 970-99



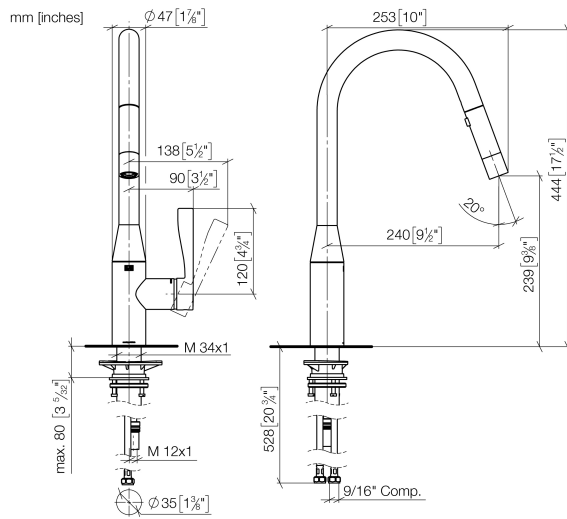
### Recommended article

**Soap dispenser without flange - Brushed Dark Platinum**

82 424 970-99



33 870 895 Product version from 2/26/2015 to 10/30/2024

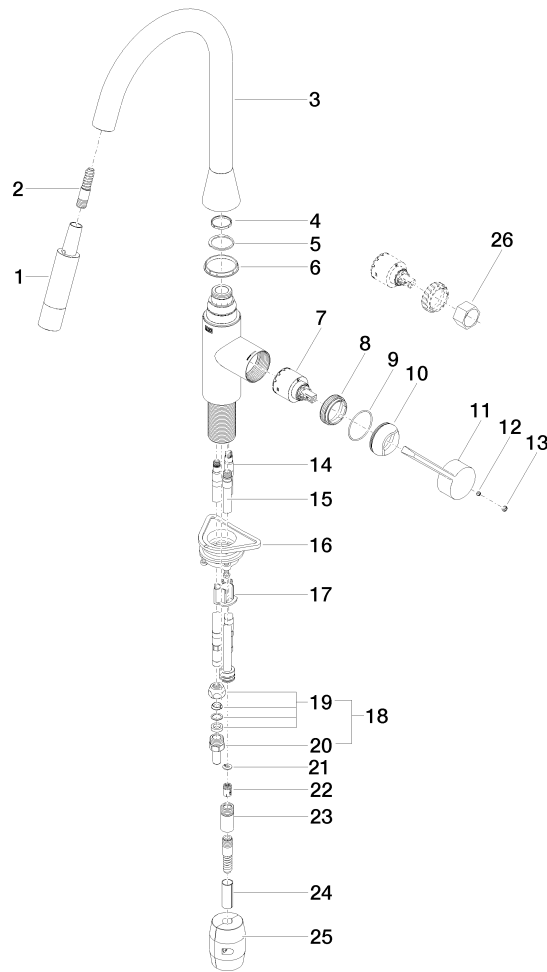


### Codes & Standards

ADA	ASME A112.18.1	California Energy Commission (CEC)	cUPC
NSF372	NSF61		

### Certificates and sustainability

IAPMO\_N-4976 IAPMO\_6397 IAPMO\_4976 (





## SYNC Single-lever mixer pull-down with spray function - Brushed Dark Platinum

SYNC

33 870 895 Product version from 2/26/2015 to 10/30/2024

### Spare parts list

Number	Item Number	Designation	Number of units	Lead time
11	09 20 89 020-99	handle	1.00	20
16	04 30 11 040 00 90	fixing set	1.00	2
5	09 28 10 162 90	ring	1.00	2
21	09 16 01 023 90	ring	1.00	2
13	90 31 20 087 00-99	plug	1.00	20
24	09 30 03 038 90	hose	1.00	2
6	09 28 10 161 90	ring	1.00	2
3	90 28 22 302 00-99	spout	1.00	20
22	09 23 01 096 90	back-flow preventer	1.00	2
23	90 24 03 253 00 90	adaptor	1.00	2
4	09 28 10 160 90	ring	1.00	2
17	09 20 93 056 90	insert	1.00	2
14	04 30 04 098 00 90	hose	2.00	60
8	09 23 10 072 90	nut	1.00	60
19	04 23 30 031 01-07	threaded connector	2.00	60
20	09 24 04 222 10-99	adaptor	2.00	-
Spare part can no longer be ordered, please order the replacement item				
10	09 28 30 030-99	cover	1.00	20
15	04 28 20 066 00 90	pipe	1.00	2
2	04 30 02 120 00-85	hose	1.00	10
18	04 24 04 222 00-99	adaptor	2.00	-
Spare part can no longer be ordered, please order the replacement item				
25	04 21 50 010 00 90	accessories	1.00	2
9	09 14 10 190 90	seal	1.00	2
1	90 12 11 148 00-99	shower	1.00	60
12	90 31 11 063 00 90	pin	1.00	2
26	90 30 09 031 00 90	key	1.00	2
7	90 15 05 046 05 90	cartridge	1.00	2