



ELIO Single-lever mixer with pull-out spout with spray function - Champagne (22kt Gold)

33 871 790 Product version from 4/1/2024



- 8-5/8" Projection
- Swiveling spout 360°
- Aerated stream and spray mode
- Total height 13-1/4"
- Height to aerator/spout outlet 11-1/2"
- 1-3/8" hole diameter
- 2 x pressure hose with 3/8" compression fitting
- Fabric braided spray hose 59"
- Water flow rate limited to max. 1.5 gpm
- lead-free
- This product can help a building meet the requirements of Green Building Rating Systems, e.g. LEED®, BREEAM®, DGNB

(ADA)

Internal backflow preventer.

Can be toggled between aerated stream and spray mode while water is running.

	Champagne (22kt Gold)	33 871 790-47 0010
	Chrome	33 871 790-00 0010
	Brushed Platinum	33 871 790-06 0010
	Platinum	33 871 790-08 0010
	Dark Chrome	33 871 790-19 0010
	Brushed Durabronze (23kt Gold)	33 871 790-28 0010
	Brushed Bronze	33 871 790-42 0010
	Brushed Champagne (22kt Gold)	33 871 790-46 0010
	Brushed Chrome	33 871 790-93 0010
	Brushed Dark Platinum	33 871 790-99 0010

Recommended article

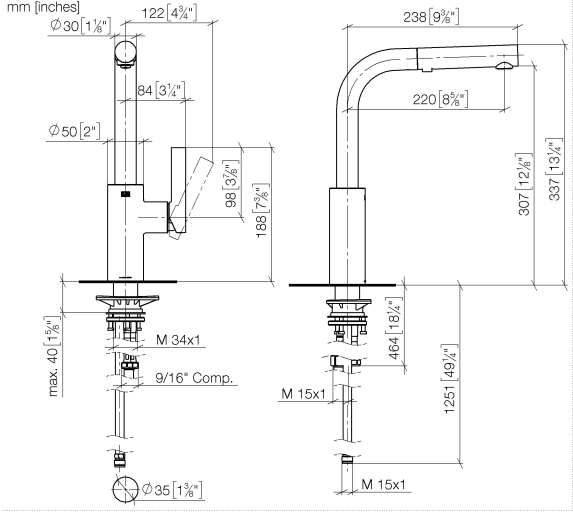
AIR SWITCH operating button, trim parts only - Champagne (22kt Gold) 10 713 970-47



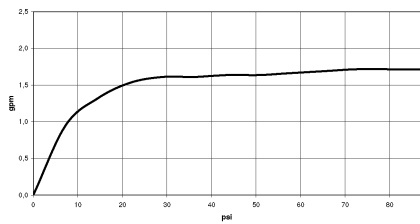


ELIO Single-lever mixer with pull-out spout with spray function - Champagne (22kt Gold)

33 871 790 Product version from 4/1/2024



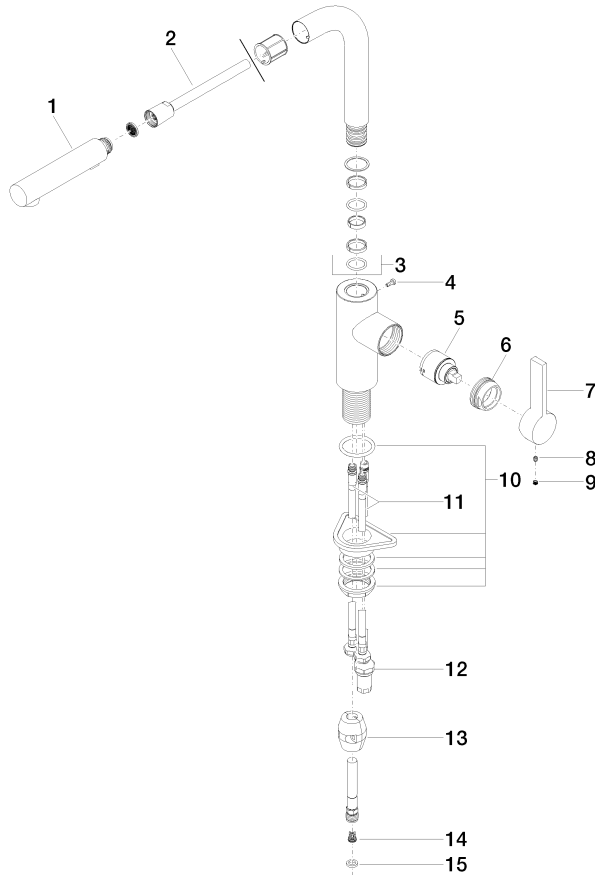
Flow rate chart



ELIO Single-lever mixer with pull-out spout with spray function - Champagne (22kt Gold)

33 871 790 Product version from 4/1/2024

Parts for other
finishes can be found
here: [Chrome](#)



Spare parts list

Number	Item Number	Designation	Number of units	Lead time
1	90 12 11 185 00-47	shower	1	-
Spare part can no longer be ordered, please order the replacement item				
2	90 30 02 062 00-47	hose	1	-
Spare part can no longer be ordered, please order the replacement item				
3	90 28 22 186 00-47	spout	1	30
4	09 30 30 054 90	screw	1	2
5	90 15 05 045 00 90	cartridge	1	2
6	09 24 04 141-47	nut	1	30
7	09 20 79 040-47	handle	1	30
8	90 31 11 030 00 90	pin	1	2
9	90 31 20 109 00 90	plug	1	2
10	04 30 11 040 00 90	fixing set	1	2
11	04 30 04 106 00 90	hose	2	2
12	90 30 04 117 00 90	hose	1	2
13	04 21 50 005 00 90	accessories	1	2
14	09 23 01 131 90	back-flow preventer	1	2
15	90 14 20 019 00 90	seal	1	2