

SYNC Single-lever mixer pull-down with spray function - Brushed Dark Platinum

SYNC

33 875 895 Product version from 2/26/2015 to 10/30/2024



- 9-1/2" Projection
- Swiveling spout 360°
- Optional restricted swivel available with swivel limiter set 12 821 970 90
- Laminar and spray function
- Total height 16-1/2"
- 9-1/2" height to aerator/spout outlet
- 1-3/8" hole diameter
- 2 x pressure hose with 3/8" compression fitting
- 59" metal shower hose
- Sprayface with descaling system
- Water flow rate limited to max. 1.5 gpm
- lead-free
- Spray types can be changed while the water is running
- This product can help a building meet the requirements of Green Building Rating Systems, e.g. LEED®, BREEAM®, DGNB

(ADA)

Internal backflow preventer.

Push button locks into spray mode when pressed. To switch back to laminar flow the water must be turned off.

	Brushed Dark Platinum	33 875 895-99 0010
	Chrome	33 875 895-00 0010
	Brushed Platinum	33 875 895-06 0010
	Platinum	33 875 895-08 0010
	Durabrand (23kt Gold)	33 875 895-09 0010
	Dark Chrome	33 875 895-19 0010
	Brushed Durabrand (23kt Gold)	33 875 895-28 0010
	Matte Black	33 875 895-33 0010
	Brushed Bronze	33 875 895-42 0010
	Brushed Champagne (22kt Gold)	33 875 895-46 0010
	Champagne (22kt Gold)	33 875 895-47 0010
	Brushed Chrome	33 875 895-93 0010

Recommended article

Swivel limiter set -

12 821 970 90



Recommended article

AIR SWITCH operating button, trim parts only - Brushed Dark Platinum

10 713 970-99



Recommended article

Soap dispenser without flange - Brushed Dark Platinum

82 424 970-99

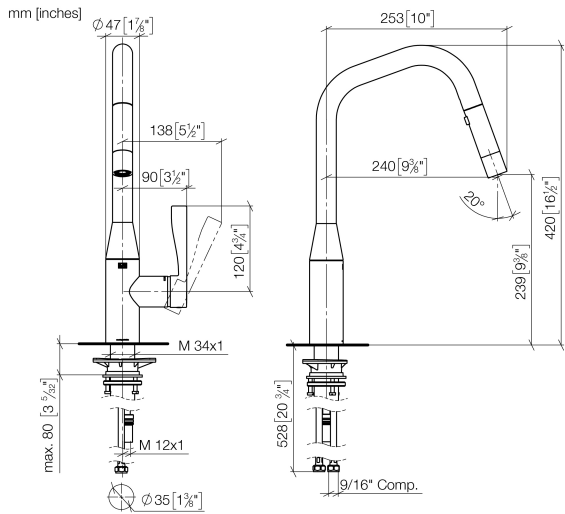




SYNC Single-lever mixer pull-down with spray function - Brushed Dark Platinum

SYNC

33 875 895 Product version from 2/26/2015 to 10/30/2024

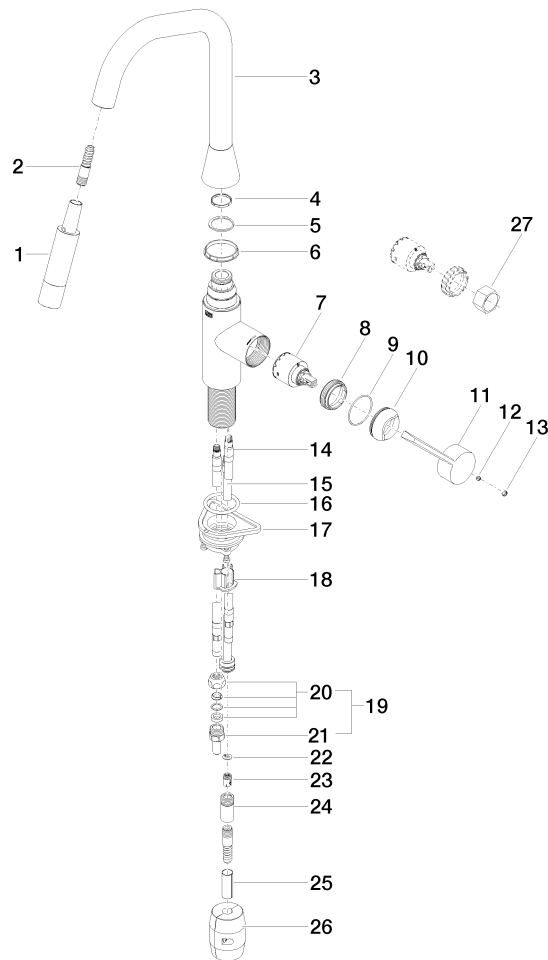


Codes & Standards

ADA	ASME A112.18.1	California Energy Commission (CEC)	cUPC
NSF372	NSF61		

Certificates and sustainability

IAPMO_N-4976	IAPMO_6397	IAPMO_4976 (
--------------	------------	--------------	--



Spare parts list

Number	Item Number	Designation	Number of units	Lead time
26	04 21 50 010 00 90	accessories	1.00	2
13	90 31 20 087 00-99	plug	1.00	20
8	09 23 10 072 90	nut	1.00	60
17	04 30 11 040 00 90	fixing set	1.00	2
10	09 28 30 030-99	cover	1.00	20
5	09 28 10 162 90	ring	1.00	2
6	09 28 10 161 90	ring	1.00	2
15	04 28 20 066 00 90	pipe	1.00	2
9	09 14 10 190 90	seal	1.00	2
2	04 30 02 120 00-85	hose	1.00	10
18	09 20 93 056 90	insert	1.00	2
11	09 20 89 020-99	handle	1.00	20
25	09 30 03 038 90	hose	1.00	2
19	04 24 04 222 00-99	adaptor	2.00	-
Spare part can no longer be ordered, please order the replacement item				
23	09 23 01 096 90	back-flow preventer	1.00	2
16	09 14 10 036 90	seal	1.00	2
3	90 28 22 301 00-99	spout	1.00	20
20	04 23 30 031 01-07	threaded connector	2.00	60
4	09 28 10 160 90	ring	1.00	2
22	09 16 01 023 90	ring	1.00	2
24	90 24 03 253 00 90	adaptor	1.00	2
14	04 30 04 098 00 90	hose	2.00	60
21	09 24 04 222 10-99	adaptor	2.00	-
Spare part can no longer be ordered, please order the replacement item				
12	90 31 11 063 00 90	pin	1.00	2
27	90 30 09 031 00 90	key	1.00	2
1	90 12 11 148 00-99	shower	1.00	60
7	90 15 05 046 05 90	cartridge	1.00	2