

ENO Single-lever mixer with pull-out spout with spray function - Brushed Chrome

ENO

33 876 760 Product version from 4/1/2024



- 8-1/8" Projection
 - Swiveling spout 130°
 - Aerated stream and spray mode
 - Total height 10"
 - Height to aerator/spout outlet 7"
 - 1-3/8" hole diameter
 - 2 x pressure hose with 3/8" compression fitting
 - 63" metal shower hose
 - Water flow rate limited to max. 1.5 gpm
 - lead-free
 - This product can help a building meet the requirements of Green Building Rating Systems, e.g. LEED®, BREEAM®, DGNB (ADA)
- Internal backflow preventer.
- Can be toggled between aerated stream and spray mode while water is running.

	Brushed Chrome	33 876 760-93 0010
	Chrome	33 876 760-00 0010
	Brushed Platinum	33 876 760-06 0010
	Platinum	33 876 760-08 0010
	Dark Chrome	33 876 760-19 0010
	Brushed Durabrass (23kt Gold)	33 876 760-28 0010
	Brushed Bronze	33 876 760-42 0010
	Brushed Champagne (22kt Gold)	33 876 760-46 0010
	Champagne (22kt Gold)	33 876 760-47 0010
	Brushed Dark Platinum	33 876 760-99 0010

Recommended article

Soap dispenser without flange - Brushed Chrome 82 424 970-93



Recommended article

AIR SWITCH operating button, trim parts only - Brushed Chrome 10 713 970-93

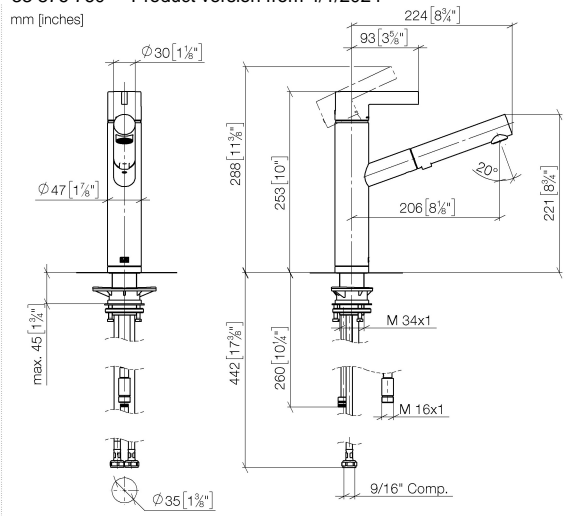


ENO Single-lever mixer with pull-out spout with spray function - Brushed Chrome

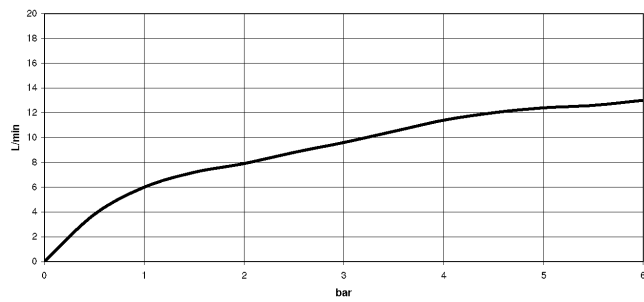
ENO

33 876 760 Product version from 4/1/2024

mm [inches]



Flow rate chart



Codes & Standards

ADA

ASME A112.18.1

cUPC

NSF372

NSF61



ENO Single-lever mixer with pull-out spout with spray function - Brushed Chrome

ENO

33 876 760 Product version from 4/1/2024

Certificates and sustainability

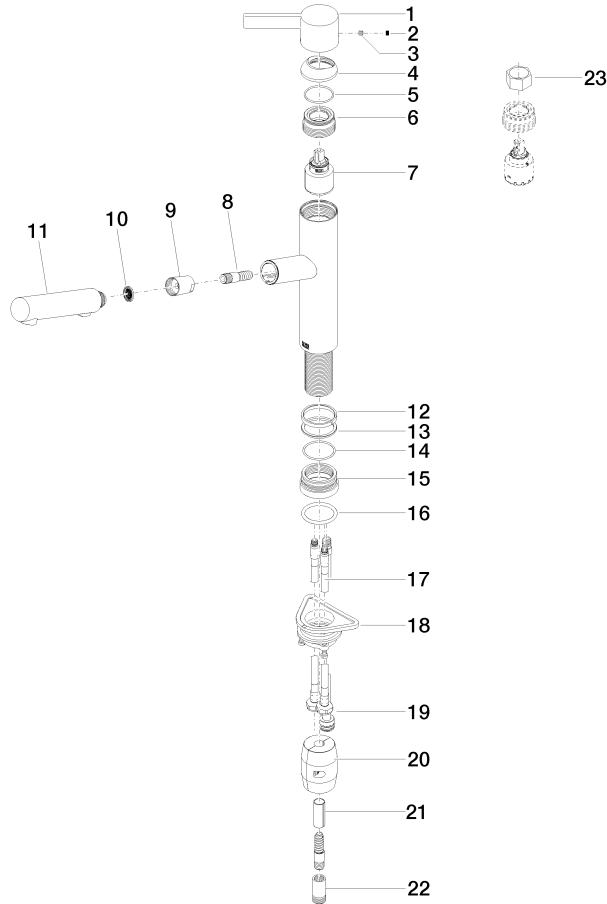
IAPMO_N-4976 IAPMO_6397 IAPMO_4976 (

ENO Single-lever mixer with pull-out spout with spray function - Brushed Chrome

ENO

33 876 760 Product version from 4/1/2024

Parts for other
finishes can be found
here: [Chrome](#)





ENO Single-lever mixer with pull-out spout with spray function - Brushed Chrome

ENO

33 876 760 Product version from 4/1/2024

Spare parts list

Number	Item Number	Designation	Number of units	Lead time
21	09 30 03 038 90	hose	1.00	2
5	09 14 10 102 90	seal	1.00	2
4	09 28 30 012-93	cover	1.00	60
22	90 24 03 253 01 90	adaptor	1.00	2
10	09 23 01 039 90	sieve	1.00	2
18	04 30 11 040 00 90	fixing set	1.00	2
1	09 20 76 001-93	handle	1.00	60
20	04 21 50 010 00 90	accessories	1.00	2
3	90 31 11 030 00 90	pin	1.00	2
14	09 14 10 034 90	seal	1.00	2
23	90 30 09 031 00 90	key	1.00	2
2	90 31 20 109 00 90	plug	1.00	2
19	04 28 20 067 00 90	pipe	1.00	2
8	04 30 02 121 00-93	hose	1.00	-
Spare part can no longer be ordered, please order the replacement item				
17	04 30 04 103 00 90	hose	2.00	2
9	90 24 03 358 00-93	sleeve	1.00	20
12	09 14 15 029 90	ring	1.00	2
16	09 14 10 036 90	seal	1.00	2
6	09 24 04 270 90	nut	1.00	2
11	90 12 11 185 00-93	shower	1.00	-
Spare part can no longer be ordered, please order the replacement item				
13	09 28 10 144 90	ring	1.00	2
7	90 15 05 064 00 90	cartridge	1.00	2
15	09 27 76 001-93	rosette	1.00	60