

## META Tub thermostat for wall-mounted installation without hand shower set - Brushed Platinum

META

34 201 979



- 8-1/4" Projection
  - Round aerator
  - Diverter with integrated volume control
  - 3/8" Shower outlet
  - Flanges Ø 2-3/8"
  - 1/2" connection
  - Center to center 5-7/8" ± 5/8"
  - Water flow rate limited to max. 4.5 gpm
- Internal backflow preventer.**

Internal backflow preventer.

	Brushed Platinum	34 201 979-06
	Chrome	34 201 979-00
	Dark Chrome	34 201 979-19
	Light gold	34 201 979-26
	Brushed Light Gold	34 201 979-27
	Matte Black	34 201 979-33
	Brushed Bronze	34 201 979-42
	Brushed Champagne (22kt Gold)	34 201 979-46
	Champagne (22kt Gold)	34 201 979-47
	Brushed Chrome	34 201 979-93
	Brushed Dark Platinum	34 201 979-99

### Required article

#### Rough-in adapter -

- Please order 2 adapters

35 080 970-90  
0010

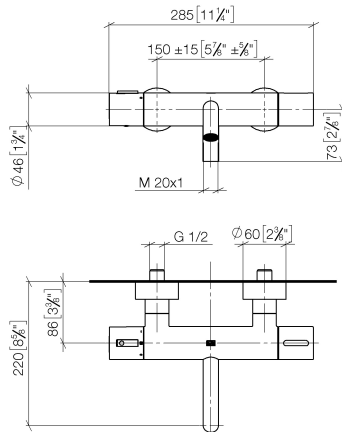


# META Tub thermostat for wall-mounted installation without hand shower set - Brushed Platinum

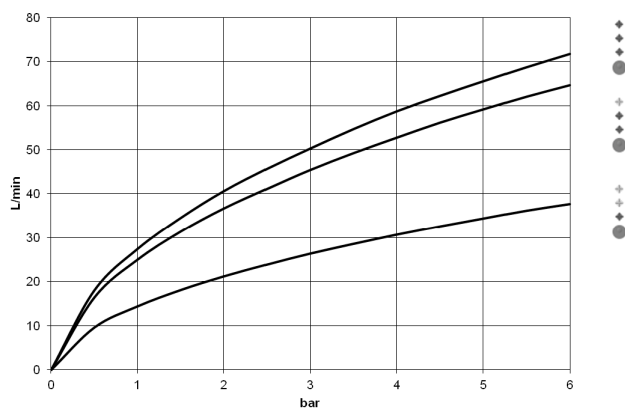
META

34 201 979

mm [inches]



## Flow rate chart



## Codes & Standards

California Energy  
Commission  
(CEC)

DIN 4109

EN 1717

ISO 3822

Scottish Water  
Byelaws

UK Water Supply  
Regulations

Ü-Zeichen



META Tub thermostat for wall-mounted installation without hand shower set -  
Brushed Platinum

META

34 201 979

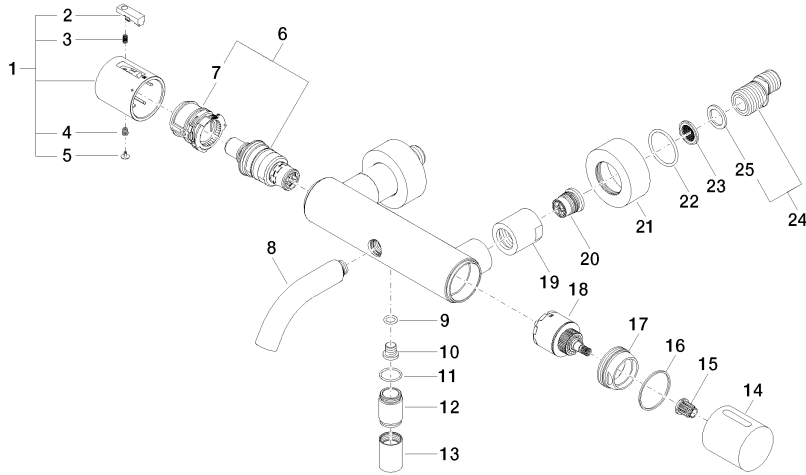
Certificates and sustainability

LGA_18	WRAS_2201	Belgaqua_21-032-2
--------	-----------	-------------------

**META Tub thermostat for wall-mounted installation without hand shower set -  
Brushed Platinum**

META

34 201 979





## META Tub thermostat for wall-mounted installation without hand shower set - Brushed Platinum

META

34 201 979

### Spare parts list

Number	Item Number	Designation	Number of units	Lead time
14	09 20 97 020-06	handle	1.00	10
21	09 27 62 004-06	rosette	2.00	10
6	90 15 02 070 00 90	cartridge	1.00	2
19	09 23 10 048-06	nut	2.00	10
18	90 15 05 033 00 90	diverter	1.00	2
20	90 29 05 024 00 90	nipple	2.00	2
12	09 24 03 115 20-06	nipple	1.00	10
17	09 24 04 141-06	nut	1.00	10
7	90 30 40 010 00 90	regulator	1.00	2
1	90 17 33 004 00-06	handle	1.00	10
8	90 11 06 214 00-06	spout	1.00	10
25	09 14 20 010 90	seal	2.00	2
9	09 14 10 139 90	seal	1.00	2
22	09 14 10 119 90	seal	2.00	2
10	08 30 30 701 90	screw	1.00	2
24	04 11 04 032 00 90	connection	2.00	2
16	09 14 15 052 90	ring	1.00	2
23	09 29 03 020 90	insert	2.00	2
15	90 12 12 002 00 90	fixing cap	1.00	2
3	90 16 02 027 00 90	spring	1.00	2
4	90 30 30 136 00 90	screw	1.00	2
13	90 21 02 069 00-06	cover	1.00	10
5	90 31 20 049 00-13	plug	1.00	30
11	90 14 10 032 00 90	seal	1.00	2
2	90 21 33 011 00-13	handle	1.00	2