

META Tub thermostat for wall-mounted installation without hand shower set -
Matte Black

META

34 201 979



- 8-1/4" Projection
- Round aerator
- Diverter with integrated volume control
- 3/8" Shower outlet
- Flanges Ø 2-3/8"
- 1/2" connection
- Center to center 5-7/8" ± 5/8"
- Water flow rate limited to max. 4.5 gpm

Internal backflow preventer.

NOTE: Hand shower sold separately. For more hand shower options, please see the miscellaneous articles section of each series.

Internal backflow preventer.

NOTE: Hand shower sold separately. For more hand shower options, please see the miscellaneous articles section of each series.

	Matte Black	34 201 979-33
	Chrome	34 201 979-00
	Brushed Platinum	34 201 979-06
	Dark Chrome	34 201 979-19
	Light gold	34 201 979-26
	Brushed Light Gold	34 201 979-27
	Brushed Dark Brass	34 201 979-39
	Brushed Bronze	34 201 979-42
	Brushed Champagne (22kt Gold)	34 201 979-46
	Champagne (22kt Gold)	34 201 979-47
	Brushed Chrome	34 201 979-93
	Brushed Dark Platinum	34 201 979-99

Required article

Rough-in adapter -

35 080 970-90

•Please order 2 adapters

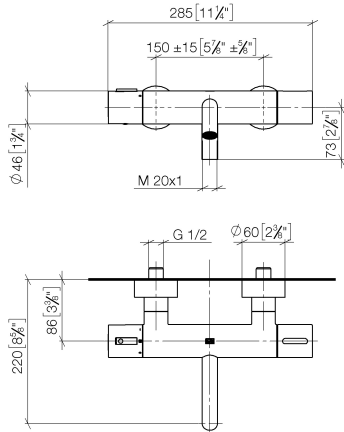
0010



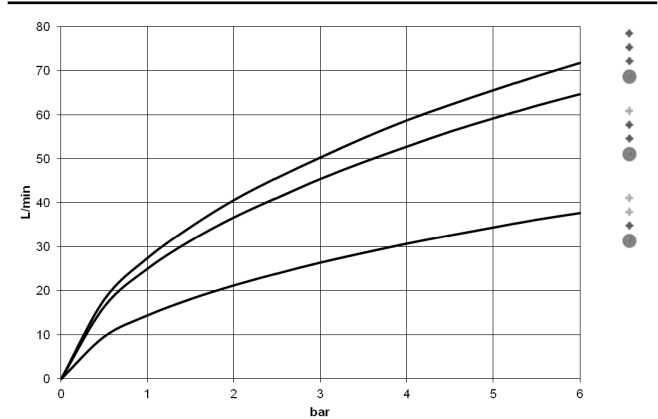
**META Tub thermostat for wall-mounted installation without hand shower set -
Matte Black**

META

34 201 979
mm [inches]



Flow rate chart



Codes & Standards

California Energy Commission (CEC)	DIN 4109	EN 1717	ISO 3822
Scottish Water Byelaws	UK Water Supply Regulations	Ü-Zeichen	



META Tub thermostat for wall-mounted installation without hand shower set -
Matte Black

META

34 201 979

Certificates and sustainability

LGA_18

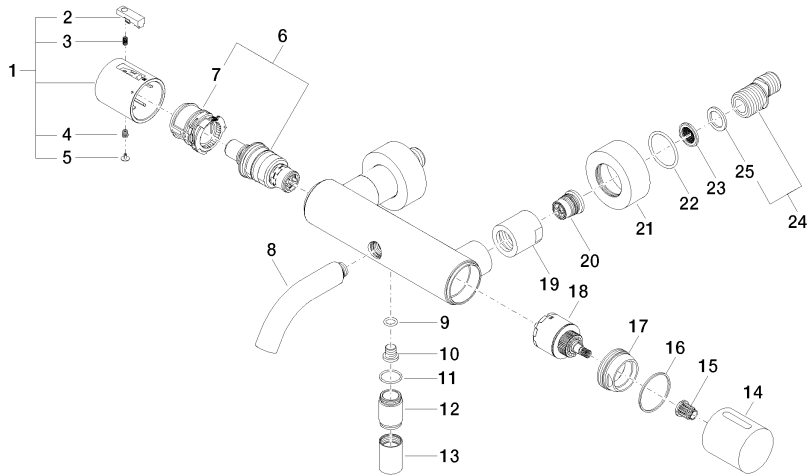
WRAS_2201

Belgaqua_21-032-2

**META Tub thermostat for wall-mounted installation without hand shower set -
Matte Black**

META

34 201 979





META Tub thermostat for wall-mounted installation without hand shower set - Matte Black

META

34 201 979

Spare parts list

Number	Item Number	Designation	Number of units	Lead time
18	90 15 05 033 00 90	diverter	1.00	2
17	09 24 04 141-33	nut	1.00	30
8	90 11 06 214 00-33	spout	1.00	30
6	90 15 02 070 00 90	cartridge	1.00	2
23	09 29 03 020 90	insert	2.00	2
25	09 14 20 010 90	seal	2.00	2
7	90 30 40 010 00 90	regulator	1.00	2
20	90 29 05 024 00 90	nipple	2.00	2
19	09 23 10 048-33	nut	2.00	30
10	08 30 30 701 90	screw	1.00	2
3	90 16 02 027 00 90	spring	1.00	2
9	09 14 10 139 90	seal	1.00	2
21	09 27 62 004-33	rosette	2.00	30
14	09 20 97 020-33	handle	1.00	30
22	09 14 10 119 90	seal	2.00	2
16	09 14 15 052 90	ring	1.00	2
12	09 24 03 115 20-33	nipple	1.00	30
15	90 12 12 002 00 90	fixing cap	1.00	2
24	04 11 04 032 00 90	connection	2.00	2
1	90 17 33 004 00-33	handle	1.00	30
11	90 14 10 032 00 90	seal	1.00	2
5	90 31 20 049 00-13	plug	1.00	30
4	90 30 30 136 00 90	screw	1.00	2
13	90 21 02 069 00-33	cover	1.00	30
2	90 21 33 011 00-13	handle	1.00	2