


Shower thermostat for wall-mounted installation - Brushed Platinum
SERIES SPECIFIC

34 442 979
Product version from 10/1/2023



- 3/8" Shower outlet
- Flanges Ø 2-3/4"
- 1/2" connection
- Center to center 5-7/8" ± 1/2"
- with volume control

**Internal backflow preventer.**


**For combination with slide bar set**

Internal backflow preventer.

For combination with slide bar set

	Brushed Platinum	34 442 979-06
	Chrome	34 442 979-00
	Platinum	34 442 979-08
	Dark Chrome	34 442 979-19
	Light gold	34 442 979-26
	Brushed Light Gold	34 442 979-27
	Brushed Durabrass (23kt Gold)	34 442 979-28
	Matte Black	34 442 979-33
	Brushed Bronze	34 442 979-42
	Brushed Champagne (22kt Gold)	34 442 979-46
	Champagne (22kt Gold)	34 442 979-47
	Brushed Chrome	34 442 979-93
	Brushed Dark Platinum	34 442 979-99

Required article



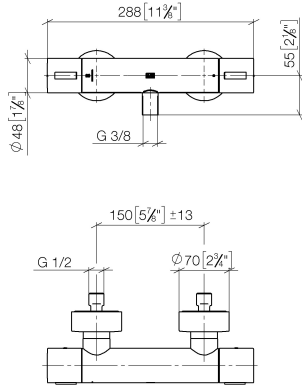
**Rough-in adapter -**

- Please order 2 adapters

35 080 970-90  
0010

34 442 979 Product version from 10/1/2023

mm [inches]



### Flow rate chart



### Codes & Standards

DIN 4109	EN 1111	EN 1717	ISO 3822
Scottish Water Byelaws	UK Water Supply Regulations	Ü-Zeichen	



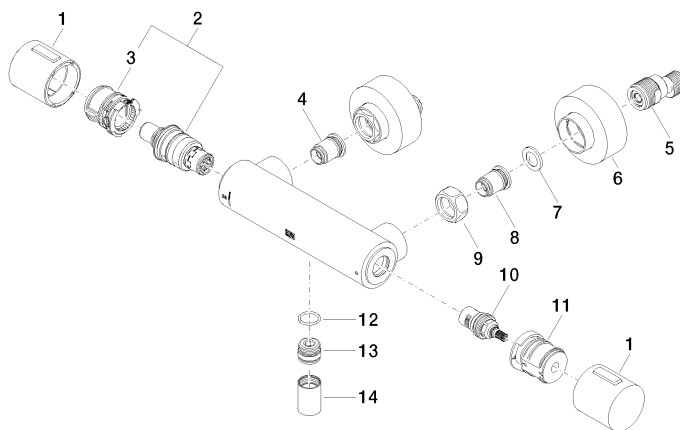
Shower thermostat for wall-mounted installation - Brushed Platinum

SERIES SPECIFIC

34 442 979    Product version from 10/1/2023

Certificates and sustainability

DVGW_DW- 6509DN0	LGA_29	WRAS_2204	Belgaqua_21-032-2
---------------------	--------	-----------	-------------------



## Spare parts list

Number	Item Number	Designation	Number of units	Lead time
4	04 31 20 530 00 90	insert	1.00	2
3	90 30 40 010 00 90	regulator	1.00	2
13	09 31 20 511-06	nipple	1.00	60
1	90 17 33 015 00-06	handle	2.00	10
11	90 30 40 017 00 90	base	1.00	2
10	90 90 03 236 00 90	top	1.00	2
6	90 31 20 512 00-06	rosette	2.00	10
7	09 29 30 050 90	sieve	2.00	2
5	04 11 04 030 00 90	connection	2.00	2
2	90 15 02 070 00 90	cartridge	1.00	2
9	09 24 77 008-00	nut	2.00	10
8	04 31 20 540 00 90	insert	1.00	2
12	90 14 10 010 00 90	seal	1.00	2
14	90 21 02 069 00-06	cover	1.00	10