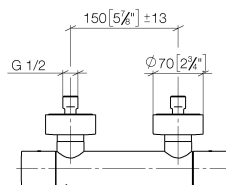


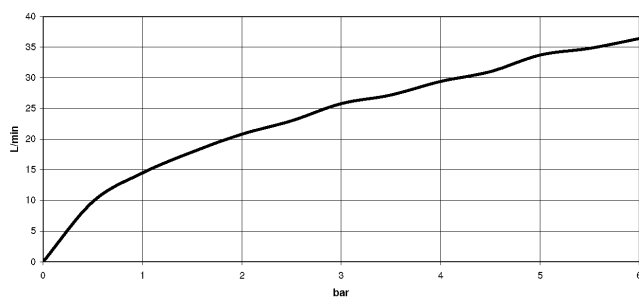


34 442 979 Product version from 10/1/2023

mm [inches]



## Flow rate chart



## Codes & Standards

DIN 4109

ISO 3822

Ü-Zeichen



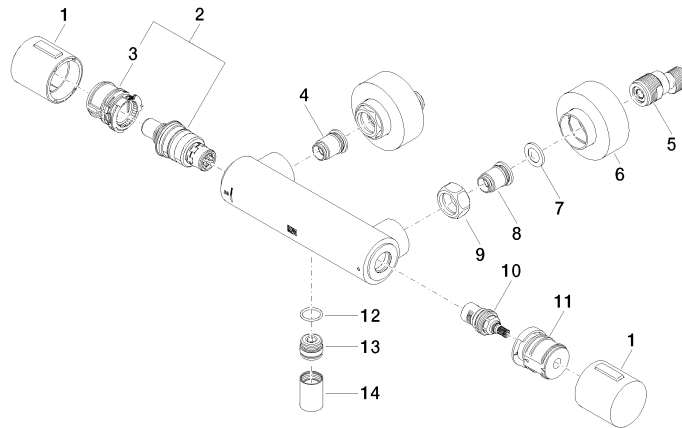
## Shower thermostat for wall-mounted installation - Brushed Light Gold

SERIES SPECIFIC

34 442 979 Product version from 10/1/2023

Certificates and sustainability

LGA\_29



## Spare parts list

Number	Item Number	Designation	Number of units	Lead time
3	90 30 40 010 00 90	regulator	1.00	2
1	90 17 33 015 00-27	handle	2.00	30
12	90 14 10 010 00 90	seal	1.00	2
8	04 31 20 540 00 90	insert	1.00	2
10	90 90 03 236 00 90	top	1.00	2
6	90 31 20 512 00-27	rosette	2.00	30
2	90 15 02 070 00 90	cartridge	1.00	2
13	09 31 20 511-27	nipple	1.00	60
11	90 30 40 017 00 90	base	1.00	2
4	04 31 20 530 00 90	insert	1.00	2
14	90 21 02 069 00-27	cover	1.00	30
5	04 11 04 030 00 90	connection	2.00	2
9	09 24 77 008-00	nut	2.00	10
7	09 29 30 050 90	sieve	2.00	2