

Shower thermostat For wall mounting - Brushed Platinum

SERIES-VARIOUS

34 443 979    Product version from 5/1/2022



- 3/8" Shower outlet
- Flanges Ø 2-3/4"
- 1/2" connection
- Center to center 5-7/8" ± 1/2"
- with volume control

**Internal backflow preventer.**

**Can be combined with hand shower sets and slide bar sets.**

Internal backflow preventer.

Can be combined with hand shower sets and slide bar sets.

	Brushed Platinum	34 443 979-06
	Chrome	34 443 979-00
	Platinum	34 443 979-08
	Dark Chrome	34 443 979-19
	Brushed Durabrass (23kt Gold)	34 443 979-28
	Matte Black	34 443 979-33
	Brushed Dark Brass	34 443 979-39
	Brushed Champagne (22kt Gold)	34 443 979-46
	Champagne (22kt Gold)	34 443 979-47
	Brushed Chrome	34 443 979-93
	Brushed Dark Platinum	34 443 979-99

Required article



**Rough-in adapter -**

- Please order 2 adapters

35 080 970-90  
0010

Required article



**TARA Volume control handle -  
Brushed Platinum**

11 431 892-06



Flow rate chart



## Codes & Standards

DIN 4109

EN 1717

ISO 3822

Scottish Water  
Byelaws

UK Water Supply  
Regulations

Ü-Zeichen



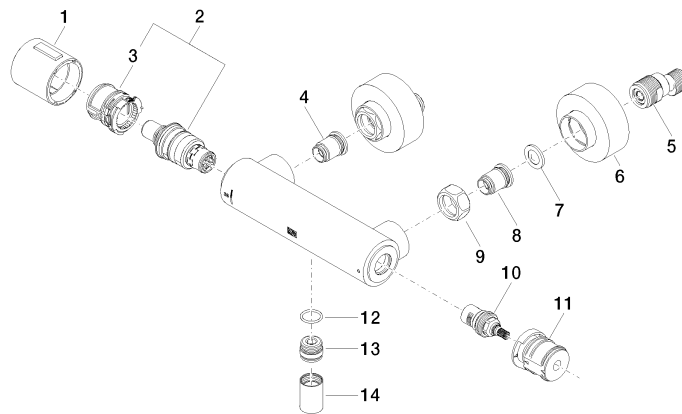
Shower thermostat For wall mounting - Brushed Platinum

SERIES-VARIOUS

34 443 979 Product version from 5/1/2022

Certificates and sustainability

Belgaqua\_22\_281\_2 LGA\_29 WRAS\_2204



## Spare parts list

Number	Item Number	Designation	Number of units	Lead time
4	04 31 20 530 00 90	insert	1.00	2
11	90 30 40 017 00 90	base	1.00	2
10	90 90 03 236 00 90	top	1.00	2
9	09 24 77 008-00	nut	2.00	10
13	09 31 20 511-06	nipple	1.00	60
5	04 11 04 030 00 90	connection	2.00	2
7	09 29 30 050 90	sieve	2.00	2
8	04 31 20 540 00 90	insert	1.00	2
6	90 31 20 512 00-06	rosette	2.00	10
3	90 30 40 010 00 90	regulator	1.00	2
2	90 15 02 070 00 90	cartridge	1.00	2
1	90 17 33 015 00-06	handle	1.00	10
14	90 21 02 069 00-06	cover	1.00	10
12	90 14 10 010 00 90	seal	1.00	2