

# Exposed shower set with shower thermostat without hand shower - Brushed Durabronz (23kt Gold)

34 459 979 Product version from 7/1/2023



- Projection 17-7/8"
  - Rainshower
  - Rain shower with descaling system
  - Rain shower diameter 8-5/8"
  - Rain shower water flow rate limited to max. 1.8 gpm (at 3 bar)
  - Diverter with integrated volume control
  - Height from center of faucet to top of shower arm 45-1/4"
  - Flanges Ø 2-3/4"
  - Height from center of faucet to bottom of rainhead 39-3/4"
  - Center to center 5-7/8" ± 1/2"
  - Metal shower hose 68-7/8" with anti-twist device
  - 1/2" connection
  - Slide bar
  - Pipe diameter 7/8"
  - with drip prevention
  - This product reduces water consumption by 28% (compared to requirements of EAct '92)
  - This product contributes to meeting the requirements of the LEED® Green Building Rating
- Internal backflow preventer.**

**NOTE: Hand shower sold separately. Please see hand shower options under the miscellaneous articles section of each series.**

Internal backflow preventer.

NOTE: Hand shower sold separately. Please see hand shower options under the miscellaneous articles section of each series.

	Brushed Durabronz (23kt Gold)	34 459 979-28 0010
	Chrome	34 459 979-00 0010
	Brushed Platinum	34 459 979-06 0010
	Platinum	34 459 979-08 0010
	Dark Chrome	34 459 979-19 0010
	Light gold	34 459 979-26 0010
	Brushed Light Gold	34 459 979-27 0010
	Matte Black	34 459 979-33 0010
	Brushed Bronze	34 459 979-42 0010
	Brushed Champagne (22kt Gold)	34 459 979-46 0010
	Champagne (22kt Gold)	34 459 979-47 0010
	Brushed Chrome	34 459 979-93 0010
	Brushed Dark Platinum	34 459 979-99 0010

## Required article

	<b>Rough-in adapter -</b>	35 080 970-90
	•Please order 2 adapters	0010

## Required article

	<b>Hand shower FlowReduce - Brushed Durabronz (23kt Gold)</b>	28 016 979-28
		0010

## Required article

	<b>SERIES-VARIOUS Hand shower FlowReduce - Brushed Durabronz (23kt Gold)</b>	28 027 979-28
		0010

## Required article

	<b>SERIES-VARIOUS Hand shower FlowReduce - Brushed Durabronz (23kt Gold)</b>	28 025 979-28
		0010

## Required article

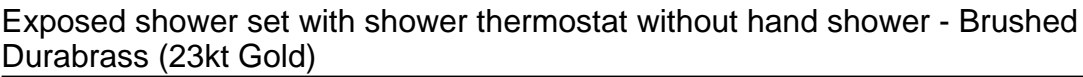
	<b>Hand shower FlowReduce - Brushed Durabronz (23kt Gold)</b>	28 012 979-28
		0010

## Required article

	<b>Hand shower FlowReduce - Brushed Durabronz (23kt Gold)</b>	28 018 979-28
		0010

## Required article

	<b>SERIES-VARIOUS Hand shower FlowReduce - Brushed Durabronz (23kt Gold)</b>	28 029 979-28
		0010



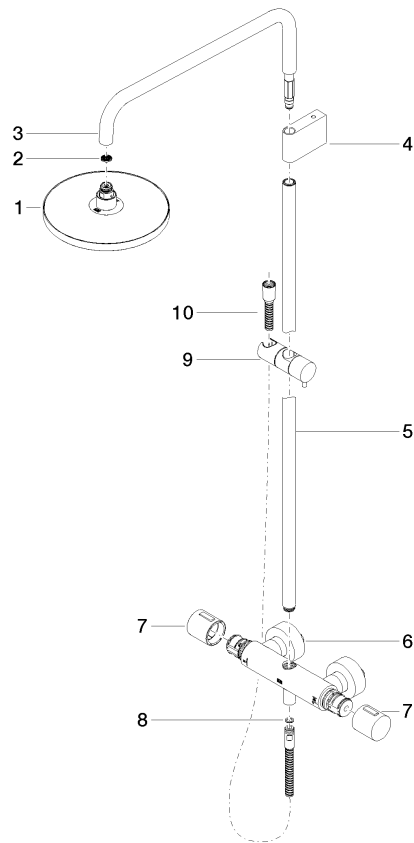
mm [inches]  
1:10

The graph shows a non-linear, increasing relationship between  $p_i$  and  $p_m$ . The curve starts at the origin (0,0) and rises steeply, then levels off, approaching a horizontal asymptote at  $p_m = 1.8$ . The x-axis is labeled  $p_i$  and ranges from 0 to 80. The y-axis is labeled  $p_m$  and ranges from 0.0 to 2.5.

ASME A112.18.1/CSA B125.1	California Energy Commission (CEC)
---------------------------------	--

## Exposed shower set with shower thermostat without hand shower - Brushed Durabronz (23kt Gold)

34 459 979 Product version from 7/1/2023



### Spare parts list

Number	Item Number	Designation	Number of units	Lead time
1	04 12 05 092 10-28	shower	1	20
2	09 23 01 039 90	sieve	1	2
3	90 28 22 348 00-28	pipe	1	20
4	90 17 11 150 00-28	holder	1	20
5	90 28 22 349 00-28	pipe	1	20
6	04 17 01 250 00-28	connection	1	20
7	90 17 33 015 00-28	handle	2	20
8	90 14 20 026 00 90	seal	1	2
9	12 570 970-28	Slider - Brushed Durabronz (23kt Gold)	1	20
10	28 322 970-28	Metal shower hose 1/2" x 3/8" x 68-7/8" - Brushed Durabronz (23kt Gold)	1	20