

Exposed shower set with shower thermostat without hand shower - Brushed Dark Platinum

34 459 979 Product version from 7/1/2023



- Projection 17-7/8"
 - Rainshower
 - Rain shower with descaling system
 - Rain shower diameter 8-5/8"
 - Rain shower water flow rate limited to max. 1.8 gpm (at 3 bar)
 - Diverter with integrated volume control
 - Height from center of faucet to top of shower arm 45-1/4"
 - Flanges Ø 2-3/4"
 - Height from center of faucet to bottom of rainhead 39-3/4"
 - Center to center 5-7/8" ± 1/2"
 - Metal shower hose 68-7/8" with anti-twist device
 - 1/2" connection
 - Slide bar
 - Pipe diameter 7/8"
 - with drip prevention
 - This product reduces water consumption by 28% (compared to requirements of EPA '92)
 - This product contributes to meeting the requirements of the LEED® Green Building Rating
- Internal backflow preventer.**


NOTE: Hand shower sold separately. Please see hand shower options under the miscellaneous articles section of each series.

Internal backflow preventer.

NOTE: Hand shower sold separately. Please see hand shower options under the miscellaneous articles section of each series.

	Brushed Dark Platinum	34 459 979-99 0010
	Chrome	34 459 979-00 0010
	Brushed Platinum	34 459 979-06 0010
	Platinum	34 459 979-08 0010
	Dark Chrome	34 459 979-19 0010
	Light gold	34 459 979-26 0010
	Brushed Light Gold	34 459 979-27 0010
	Brushed Durabronze (23kt Gold)	34 459 979-28 0010
	Matte Black	34 459 979-33 0010
	Brushed Bronze	34 459 979-42 0010
	Brushed Champagne (22kt Gold)	34 459 979-46 0010
	Champagne (22kt Gold)	34 459 979-47 0010
	Brushed Chrome	34 459 979-93 0010

Required article

	Rough-in adapter - • Please order 2 adapters	35 080 970-90 0010
---	--	--------------------

Required article

	Hand shower FlowReduce - Brushed Dark Platinum	28 012 979-99 0010
---	---	--------------------

Required article

	SERIES-VARIOUS Hand shower FlowReduce - Brushed Dark Platinum	28 029 979-99 0010
---	--	--------------------

Required article

	SERIES-VARIOUS Hand shower FlowReduce - Brushed Dark Platinum	28 025 979-99 0010
---	--	--------------------

Required article

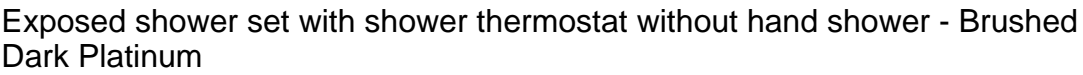
	Hand shower FlowReduce - Brushed Dark Platinum	28 016 979-99 0010
---	---	--------------------

Required article

	Hand shower FlowReduce - Brushed Dark Platinum	28 018 979-99 0010
---	---	--------------------

Required article

	SERIES-VARIOUS Hand shower FlowReduce - Brushed Dark Platinum	28 027 979-99 0010
---	--	--------------------



mm [inches]
1:10

Technical drawing of the THERMOMAX 1000 boiler, showing front and side views with dimensions in mm and inches.

Front View Dimensions:

- Total height: 1150 [45 1/4"]
- Height to top of boiler body: 1009 [39 3/4"]
- Height to top of flange: 37 [1 1/2"]
- Flange diameter: $\varnothing 7 [7/8"]$
- Boiler body diameter: $\varnothing 24 [1 1/2"]$
- Base width: 150 [5 7/8"] ± 13

Side View Dimensions:

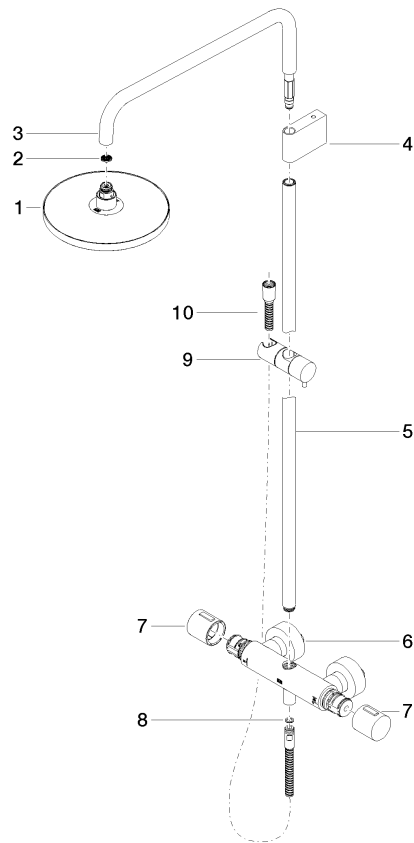
- Height to top of boiler body: 960 [37 3/4"]
- Height to top of flange: 60 [2 3/8"]
- Flange diameter: $\varnothing 70 [2 3/4"]$
- Boiler body diameter: $\varnothing 220 [8 5/8"]$
- Distance from boiler body to base: 453 [17 7/8"]
- Base width: 88 [3 1/2"]
- Base connection: G 1/2"

pel	gm
0	0.0
10	1.4
20	1.7
30	1.75
40	1.75
50	1.75
60	1.75
70	1.78
80	1.78

ASME A112.18.1/CSA B125.1	California Energy Commission (CEC)
---------------------------------	--

Exposed shower set with shower thermostat without hand shower - Brushed Dark Platinum

34 459 979 Product version from 7/1/2023



Spare parts list

Number	Item Number	Designation	Number of units	Lead time
1	04 12 05 092 10-99	shower	1	20
2	09 23 01 039 90	sieve	1	2
3	90 28 22 348 00-99	pipe	1	20
4	90 17 11 150 00-99	holder	1	20
5	90 28 22 349 00-99	pipe	1	20
6	04 17 01 250 00-99	connection	1	20
7	90 17 33 015 00-99	handle	2	20
8	90 14 20 026 00 90	seal	1	2
9	12 570 970-99	Slider - Brushed Dark Platinum	1	20
10	28 322 970-99	Metal shower hose 1/2" x 3/8" x 68-7/8" - Brushed Dark Platinum	1	2