

VAIA Exposed Shower Set - Brushed Dark Platinum

VAIA

34 460 809 Product version from 4/1/2025



- Projection 17-7/8"
- Rainshower
- Rain shower diameter 11-3/4"
- Rain shower with descaling system
- Rain shower water flow rate limited to max. 1.8 gpm (at 3 bar)
- Function from: 1.7 gpm
- Diverter with integrated volume control
- Flanges Ø 2-3/4"
- Height from center of faucet to bottom of rainhead 37-3/4"
- Height from center of faucet to top of shower arm 49-7/8"
- Center to center 5-7/8" ± 1/2"
- Metal shower hose 68-7/8" with anti-twist device
- 1/2" connection
- Slide bar
- Pipe diameter 7/8"

This article does not include a hand shower!

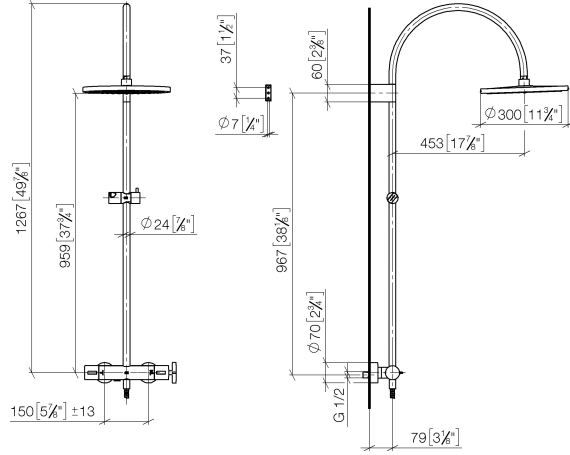
Internal backflow preventer.

| | | |
|---|--------------------------------|--------------------|
|  | Brushed Dark Platinum | 34 460 809-99 0010 |
|  | Chrome | 34 460 809-00 0010 |
|  | Brushed Platinum | 34 460 809-06 0010 |
|  | Platinum | 34 460 809-08 0010 |
|  | Dark Chrome | 34 460 809-19 0010 |
|  | Brushed Durabronze (23kt Gold) | 34 460 809-28 0010 |
|  | Brushed Dark Brass | 34 460 809-39 0010 |
|  | Brushed Bronze | 34 460 809-42 0010 |
|  | Brushed Champagne (22kt Gold) | 34 460 809-46 0010 |
|  | Champagne (22kt Gold) | 34 460 809-47 0010 |

34 460 809 Product version from 4/1/2025

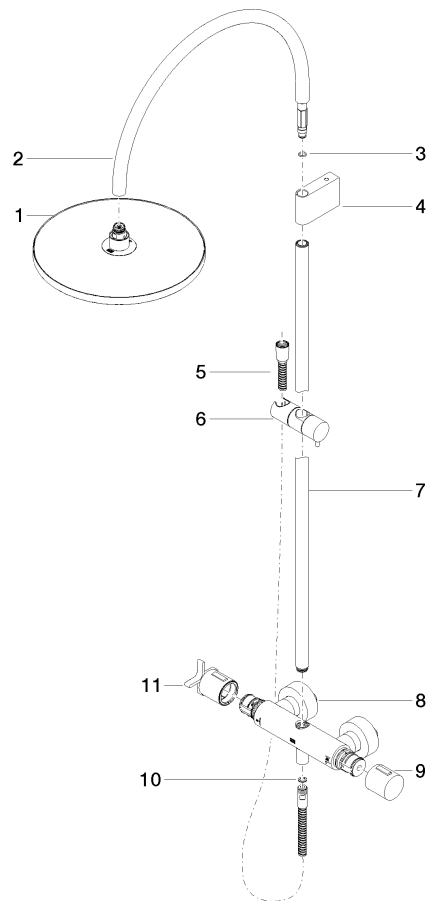
mm [inches]

1:10



34 460 809 Product version from 4/1/2025

Parts for other
finishes can be found
here: [Chrome](#)



Spare parts list

| Number | Item Number | Designation | Number of units | Lead time |
|--------|--------------------|---|-----------------|-----------|
| 1 | 04 12 05 091 10-99 | shower | 1.00 | 20 |
| 4 | 90 17 11 150 00-99 | holder | 1.00 | 20 |
| 10 | 90 14 20 026 00 90 | seal | 1.00 | 2 |
| 9 | 90 17 33 015 00-99 | handle | 1.00 | 20 |
| 5 | 28 322 970-99 | Metal shower hose 1/2" x 3/8" x 68-7/8" - Brushed Dark Platinum | 1.00 | 2 |
| 11 | 90 17 33 030 00-99 | handle | 1.00 | 20 |
| 6 | 12 570 970-99 | Slider - Brushed Dark Platinum | 1.00 | 20 |
| 8 | 04 17 01 250 00-99 | connection | 1.00 | 20 |
| 3 | 09 14 10 008 90 | seal | 1.00 | 2 |
| 7 | 90 28 22 349 00-99 | pipe | 1.00 | 20 |
| 2 | 04 28 22 346 00-99 | pipe | 1.00 | 20 |