

# VAIA Exposed Shower Set with shower thermostat without hand shower - Matte Black

VAIA

34 465 809 Product version from 6/1/2025



## Rain shower:

- Rain shower diameter 11-3/4"
- Rain shower material: metal
- PURE RAIN, flow rate max. 1.7 gpm (at 3 bar)
- Function from: 1.7 gpm
- Rain shower with descaling system

## Control element:

- Diverter with integrated volume control
- Metal shower hose 68-7/8" with anti-twist device
- Slide bar

## Technical data:

- Projection 17-7/8"
- Height from center of faucet to bottom of rainhead 37-3/4"
- Height from center of faucet to top of shower arm 49-7/8"
- Flanges Ø 2-3/4"
- Center to center 5-7/8" ± 1/2"
- Pipe diameter 3/4"
- 1/2" connection

## Notes:

- This article does not include a hand shower!

|   |                                |                    |
|---|--------------------------------|--------------------|
|    | Matte Black                    | 34 465 809-33 0010 |
|    | Chrome                         | 34 465 809-00 0010 |
|    | Brushed Platinum               | 34 465 809-06 0010 |
|    | Platinum                       | 34 465 809-08 0010 |
|    | Dark Chrome                    | 34 465 809-19 0010 |
|    | Light gold                     | 34 465 809-26 0010 |
|    | Brushed Light Gold             | 34 465 809-27 0010 |
|    | Brushed Durabronze (23kt Gold) | 34 465 809-28 0010 |
|    | Brushed Dark Brass             | 34 465 809-39 0010 |
|   | Brushed Bronze                 | 34 465 809-42 0010 |
|  | Brushed Champagne (22kt Gold)  | 34 465 809-46 0010 |
|  | Champagne (22kt Gold)          | 34 465 809-47 0010 |
|  | Brushed Chrome                 | 34 465 809-93 0010 |
|  | Brushed Dark Platinum          | 34 465 809-99 0010 |



## VAIA Exposed Shower Set with shower thermostat without hand shower - Matte Black

VAIA

---

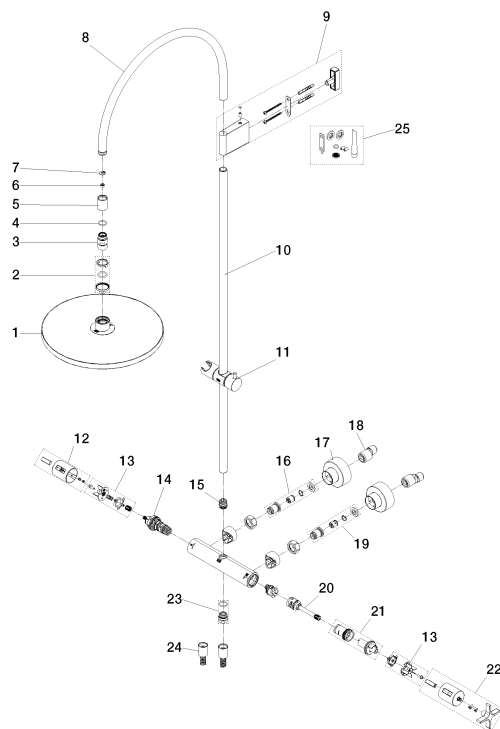
34 465 809 Product version from 6/1/2025

# VAIA Exposed Shower Set with shower thermostat without hand shower - Matte Black

VAIA

34 465 809 Product version from 6/1/2025

Parts for other  
finishes can be found  
here: [Chrome](#)



## Spare parts list

| Number   | Item Number        | Designation  | Number of units | Lead time |
|--|--------------------|--------------|-----------------|-----------|
| 7  | 09 16 01 014 90    | ring         | 1.00            | 2         |
| 4  | 09 14 10 116 90    | ring         | 1.00            | 2         |
| 15   | 90 24 03 540 01 90 | nipple       | 1.00            | -         |
| Spare part can no longer be ordered, please order the replacement item |                    |              |                 |           |
| 1  | 90 12 05 110 00-33 | shower       | 1.00            | -         |
| Spare part can no longer be ordered, please order the replacement item |                    |              |                 |           |
| 5  | 90 21 02 029 00-33 | cover        | 1.00            | -         |
| Spare part can no longer be ordered, please order the replacement item |                    |              |                 |           |
| 19   | 90 31 20 540 00 90 | flow reducer | 1.00            | -         |
| Spare part can no longer be ordered, please order the replacement item |                    |              |                 |           |
| 3  | 90 18 40 260 00-33 | connection   | 1.00            | -         |
| Spare part can no longer be ordered, please order the replacement item |                    |              |                 |           |
| 12   | 90 17 33 030 01-33 | handle       | 1.00            | -         |
| Spare part can no longer be ordered, please order the replacement item |                    |              |                 |           |
| 22   | 11 432 809-33      | handle       | 1.00            | -         |



## VAIA Exposed Shower Set with shower thermostat without hand shower - Matte Black

VAIA

34 465 809 Product version from 6/1/2025

Spare part can no longer be ordered, please order the replacement item

|    |                    |            |      |    |
|----|--------------------|------------|------|----|
| 18 | 04 11 04 030 00 90 | connection | 2.00 | 2  |
| 17 | 90 31 20 512 00-33 | rosette    | 1.00 | 30 |
| 14 | 90 15 02 071 00 90 | top        | 1.00 | -  |

Spare part can no longer be ordered, please order the replacement item

|    |                    |        |      |    |
|----|--------------------|--------|------|----|
| 11 | 12 550 970-33      | Slider | 1.00 | 60 |
| 24 | 90 30 02 090 00-33 | hose   | 1.00 | -  |

Spare part can no longer be ordered, please order the replacement item

|   |                    |      |      |   |
|---|--------------------|------|------|---|
| 2 | 90 23 10 096 00 90 | ring | 1.00 | - |
|---|--------------------|------|------|---|

Spare part can no longer be ordered, please order the replacement item

|    |                    |            |      |   |
|----|--------------------|------------|------|---|
| 25 | 90 30 30 514 04 90 | fixing set | 1.00 | - |
|----|--------------------|------------|------|---|

Spare part can no longer be ordered, please order the replacement item

|    |                    |        |      |   |
|----|--------------------|--------|------|---|
| 23 | 90 31 20 516 00-33 | nipple | 1.00 | - |
|----|--------------------|--------|------|---|

Spare part can no longer be ordered, please order the replacement item

|   |                    |              |      |   |
|---|--------------------|--------------|------|---|
| 6 | 09 23 01 102 90    | flow reducer | 1.00 | 2 |
| 9 | 90 17 20 315 00-33 | holder       | 1.00 | - |

Spare part can no longer be ordered, please order the replacement item

|    |                    |      |      |   |
|----|--------------------|------|------|---|
| 10 | 90 28 22 612 00-33 | pipe | 1.00 | - |
|----|--------------------|------|------|---|

Spare part can no longer be ordered, please order the replacement item

|    |                    |          |      |   |
|----|--------------------|----------|------|---|
| 20 | 90 15 02 071 03 90 | diverter | 1.00 | - |
|----|--------------------|----------|------|---|

Spare part can no longer be ordered, please order the replacement item

|   |                    |       |      |   |
|---|--------------------|-------|------|---|
| 8 | 90 28 22 614 00-33 | spout | 1.00 | - |
|---|--------------------|-------|------|---|

Spare part can no longer be ordered, please order the replacement item

|    |                    |      |      |   |
|----|--------------------|------|------|---|
| 13 | 90 12 12 072 00 90 | base | 2.00 | - |
|----|--------------------|------|------|---|

Spare part can no longer be ordered, please order the replacement item

|    |                    |         |      |   |
|----|--------------------|---------|------|---|
| 21 | 90 30 40 018 00 90 | adaptor | 1.00 | - |
|----|--------------------|---------|------|---|

Spare part can no longer be ordered, please order the replacement item

|    |                    |              |      |   |
|----|--------------------|--------------|------|---|
| 16 | 90 31 20 530 00 90 | flow reducer | 1.00 | - |
|----|--------------------|--------------|------|---|

Spare part can no longer be ordered, please order the replacement item