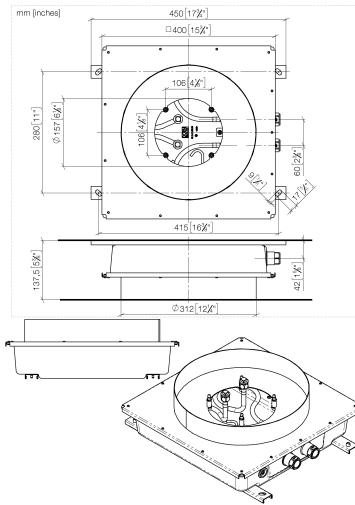




- Rough parts
- 2x female thread 1/2" connections
- Flush-mounted installation box Ø 14-1/8" RAL 9003 signal white
- For simultaneous control of the jet types, we recommend the xTool thermostat module
- Not suitable for use in a steam room.

Pre-assembly kit for three-way diverter included

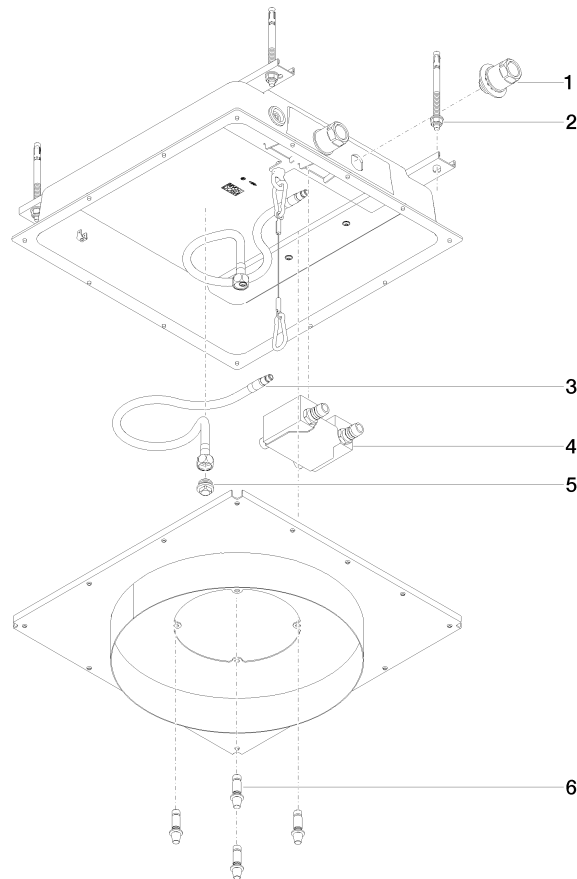


Codes & Standards

ASME A112.18.1 cUPC

Certificates and sustainability

IAPMO_4976 (



Spare parts list

Number	Item Number	Designation	Number of units	Lead time
1	90 24 03 306 00 90	fixing set	1.00	2
4	90 30 01 216 10 90	Venting service kit	1.00	2
3	04 30 04 097 00 90	hose	2.00	60
5	09 31 20 042 90	plug	2.00	2
6	90 30 01 215 00 90	fixing set	1.00	2
2	04 30 35 008 00 90	fixing set	1.00	2