

35 085 970



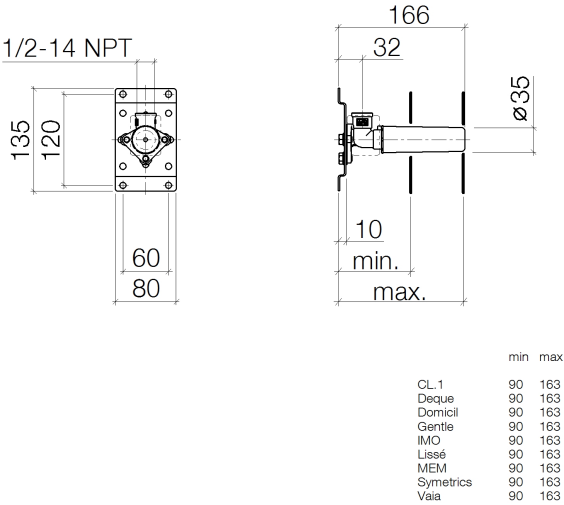
- brass, lead free
- female thread 1/2" connection
- 1x outlet 1/2"
- Mud guard
- Water protection
- Sound insulation



Concealed wall elbow -

SERIES-VARIOUS

35 085 970

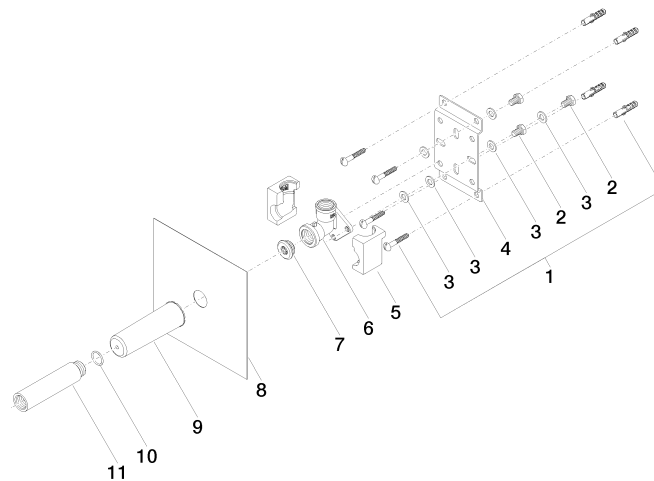


Codes & Standards

ASME A112.18.1	cUPC	NSF372	NSF61
----------------	------	--------	-------

Certificates and sustainability

IAPMO\_N-4976      IAPMO\_6397      IAPMO\_4976 (



## Spare parts list

Number	Item Number	Designation	Number of units	Lead time
6	09 11 03 042 10 90	connection	1.00	60
8	04 14 03 072 01 90	gasket kit	1.00	2
2	09 30 30 152 90	screw	3.00	2
1	04 30 31 024 01 90	fixing set	2.00	2
4	09 17 20 094 90	holder	1.00	2
11	09 24 03 169 10 90	adaptor	1.00	2
5	09 11 11 036 90	accessories	1.00	2
9	09 21 02 102 90	cap	1.00	2
7	04 31 20 006 00 90	plug	1.00	2
3	09 30 11 139 90	disc	6.00	2
10	90 14 10 010 00 90	seal	1.00	2