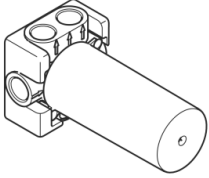


Wall mounted three-way diverter -

35 104 970 Product version from 5/15/2020



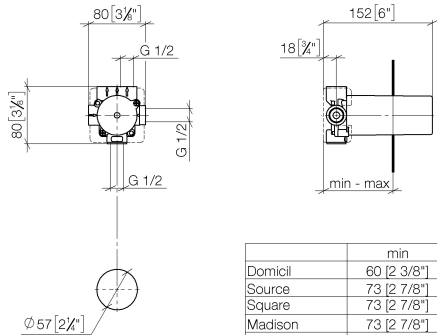
- brass, lead free
- 2x female thread 1/2" connections
- 3x outlet 1/2"
- Shaft and sleeve can be cut to length
- Mud guard
- Water protection
- Sound insulation



Wall mounted three-way diverter -

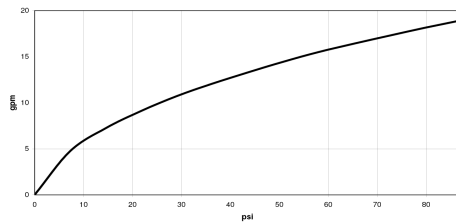
35 104 970 Product version from 5/15/2020

mm [inches]



	min	max
Domicil	60 [2 3/8"]	105 [4 1/8"]
Source	73 [2 7/8"]	123 [4 7/8"]
Square	73 [2 7/8"]	123 [4 7/8"]
Madison	73 [2 7/8"]	138 [5 3/8"]
LULU	73 [2 7/8"]	146 [5 3/4"]
Madison Flair	73 [2 7/8"]	148 [5 7/8"]
Just	78 [3 1/8"]	148 [5 7/8"]
LaFleur	83 [3 1/4"]	148 [5 7/8"]
Supernova	83 [3 1/4"]	148 [5 7/8"]
Tara	83 [3 1/4"]	148 [5 7/8"]
Vaia	83 [3 1/4"]	148 [5 7/8"]
MEM	108 [4 1/4"]	148 [5 7/8"]
CL_1	108 [4 1/4"]	148 [5 7/8"]

Flow rate chart



Codes & Standards

ASME A112.18.1	ASME A112.18.1/CSA B125.1	California Energy Commission (CEC)	cUPC
----------------	---------------------------------	--	------



Wall mounted three-way diverter -

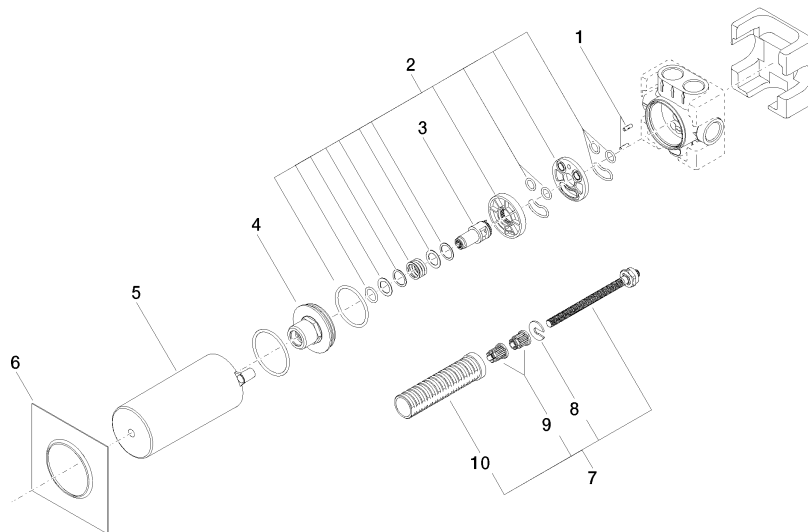
35 104 970 Product version from 5/15/2020

Certificates

IAPMO_4976 (

Wall mounted three-way diverter -

35 104 970 Product version from 5/15/2020



Spare parts list

Number	Item Number	Designation	Number of units	Lead time
1	09 31 11 151 90	pin	2	2
2	90 30 11 085 00 90	set	1	2
3	09 29 06 025 90	spindle	1	2
4	09 21 02 124 90	lid	1	2
5	09 21 02 125 90	cap	1	2
6	09 14 03 109 90	seal	1	2
7	90 18 40 077 00 90	spindle	1	2
8	09 16 01 026 90	ring	1	2
9	90 12 12 002 00 90	fixing cap	2	2
10	90 18 40 077 01 90	spindle	1	2