



Wall mounted two-way diverter -

35 202 970 Product version from 4/1/2022



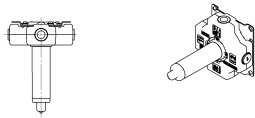
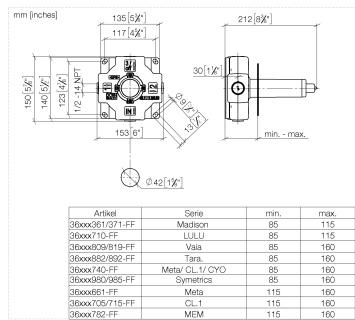
- brass, lead free
- 1x 1/2" male thread connection
- 2x outlet 1/2"
- Shaft and sleeve can be cut to length
- Mud guard
- Water protection
- Sound insulation

NOTE: Important for certain series! Due to minimum rough-in requirements, a framing of 2x6 studs may be needed.

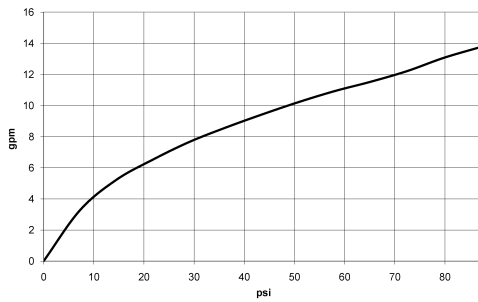


Wall mounted two-way diverter -

35 202 970 Product version from 4/1/2022



Flow rate chart



Codes & Standards

ASME A112.18.1 cUPC



Wall mounted two-way diverter -

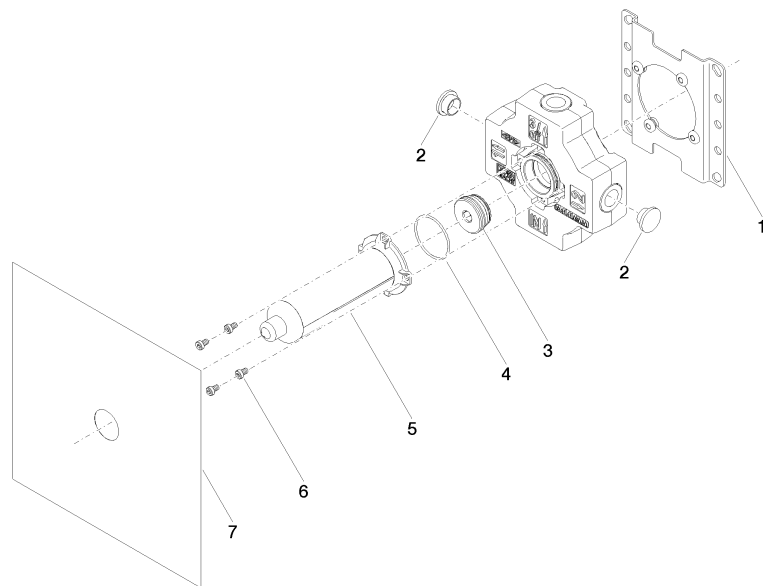
35 202 970 Product version from 4/1/2022

Certificates

IAPMO_4976 (

Wall mounted two-way diverter -

35 202 970 Product version from 4/1/2022



Spare parts list

Number	Item Number	Designation	Number of units	Lead time
1	04 17 20 252 00 90	base	1	60
2	09 31 20 092 90	plug	4	2
3	90 31 20 131 00 90	plug	1	2
4	09 14 10 210 90	seal	1	2
5	04 21 02 180 10 90	cap	1	2
6	09 30 30 112 90	screw	4	2
7	04 14 03 116 00 90	gasket kit	1	2