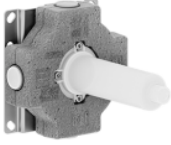


Wall mounted three-way diverter -

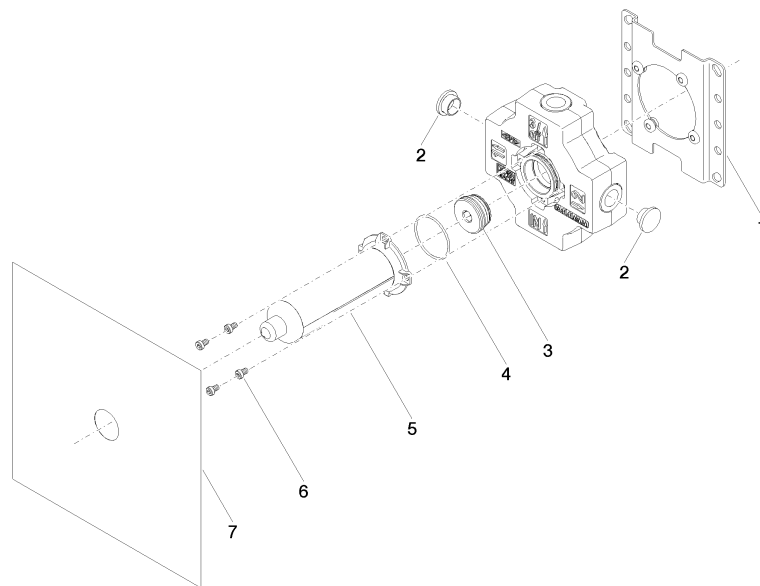
SERIES-VARIOUS

35 203 970 Product version from 4/1/2022



- brass, lead free
- 1x female thread 1/2" connections
- 3x outlet 1/2"
- Shaft and sleeve can be cut to length
- Mud guard
- Water protection
- Sound insulation

NOTE: Important for certain series! Due to minimum rough-in requirements, a framing of 2x6 studs may be needed.



Spare parts list

Number	Item Number	Designation	Number of units	Lead time
4	09 14 10 210 90	seal	1.00	2
1	04 17 20 252 00 90	base	1.00	60
7	04 14 03 116 00 90	gasket kit	1.00	2
5	04 21 02 180 10 90	cap	1.00	2
6	09 30 30 112 90	screw	4.00	2
2	09 31 20 092 90	plug	2.00	2
3	90 31 20 131 00 90	plug	1.00	2