

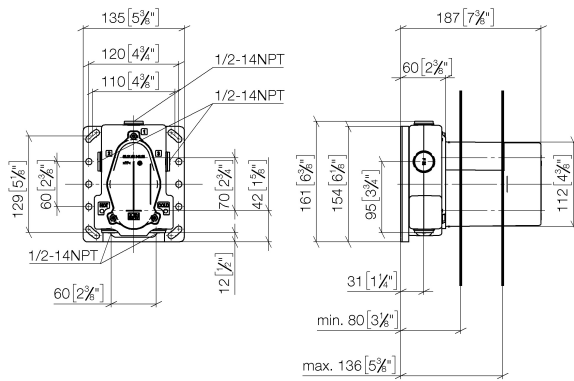
35 426 970



- integrated stop
- lead free compliant
- 2x back flow preventer
- 2x Connection 1/2" IT (cold/warm), DN 15
- 3x outlet 1/2"
- Mud guard
- Water protection
- Noise and heat insulation
- suitable for xGRID (when using installation track + 1/2" recess depth)
- Center to center 2-3/4"
- 3x outlet 1/2"
- single flow function only

35 426 970

mm [inches]



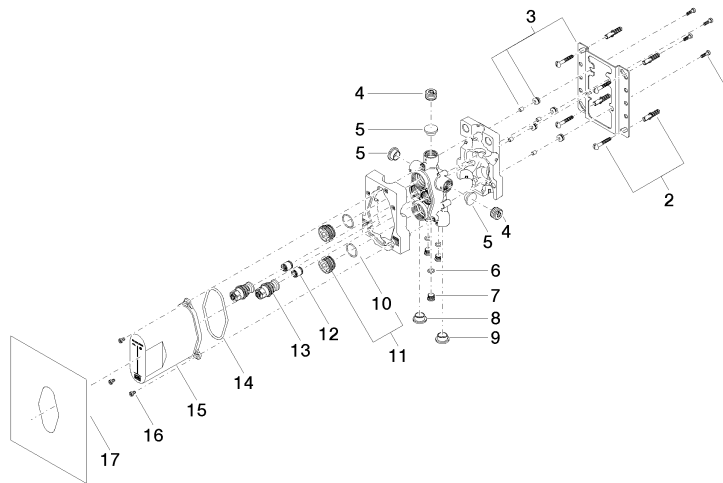
Codes & Standards

ASME A112.18.1

cUPC

Certificates and sustainability

IAPMO_4976 (



Spare parts list

Number	Item Number	Designation	Number of units	Lead time
	13 04 29 05 031 01 90	insert	2.00	2
	16 09 30 30 112 90	screw	3.00	2
	4 09 31 20 064 90	plug	2.00	2
	6 09 14 10 139 90	seal	3.00	2
	1 09 30 30 171 90	screw	4.00	2
	7 09 31 20 039 10 90	plug	3.00	60
	8 09 31 20 093 90	plug	1.00	2
	2 04 30 31 024 01 90	fixing set	2.00	2
	12 90 23 01 040 00 90	back-flow preventer	2.00	2
	9 09 31 20 094 90	plug	1.00	2
	3 04 17 20 127 00 90	holder	1.00	2
	5 09 31 20 092 90	plug	3.00	2
	11 04 30 11 149 00 90	plug	2.00	2
	15 04 21 02 146 00 90	cap	1.00	2
	10 09 14 10 112 90	seal	2.00	2
	17 04 14 03 080 00 90	gasket kit	1.00	2
	14 09 14 10 512 90	seal	1.00	2