



- brass, lead free
- 2x back flow preventer
- integrated stop
- 2x connections 3/4" (hot/cold)
- 1x female thread 1/2" outlet, left/right/top alternatively
- Thermostat cartridge
- Ceramic disc cartridge
- 2x Mud guard
- 2x Water protection
- Sound insulation
- Center to center 4-3/4"

NOTE: Important for certain series! Due to minimum rough-in requirements, a framing of 2x6 studs may be needed.

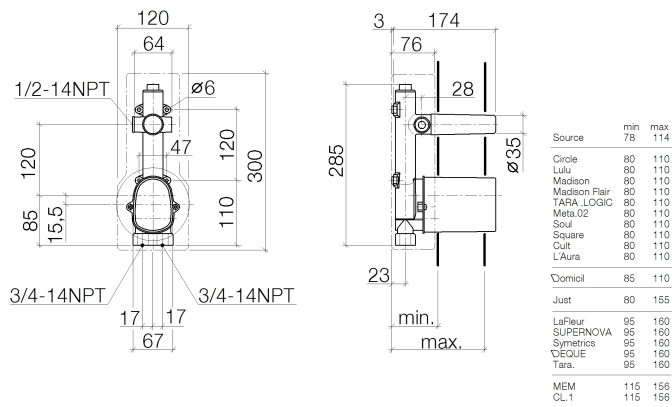
Recommended article		Recommended article	
	<b>Extension 1-1/8" -</b>		
		12 177 970 90	
	<b>Extension 1-3/4" -</b>		
			12 178 970 90



xTOOL Concealed thermostat rough with one volume control -

SERIES-VARIOUS

35 437 970    Product version up to 5/12/2021

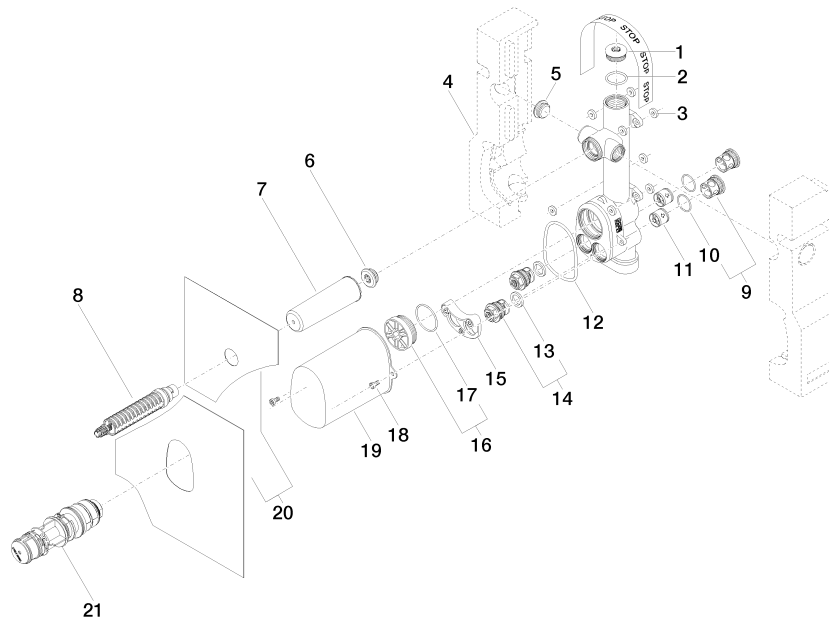


Codes & Standards

ASME A112.18.1      cUPC

Certificates and sustainability

IAPMO\_4976 (



## Spare parts list

Number	Item Number	Designation	Number of units	Lead time
2	09 14 10 009 90	seal	1.00	2
19	09 21 02 103 90	cap	1.00	2
16	04 31 20 100 00 90	plug	1.00	2
3	04 14 05 045 00 90	set	8.00	2
8	90 90 03 143 00 90	top	1.00	2
12	09 14 10 189 90	seal	1.00	2
14	90 29 05 031 00 90	insert	2.00	2
17	09 14 10 111 90	seal	1.00	2
4	09 11 11 021 90	accessories	1.00	2
6	04 31 20 006 00 90	plug	1.00	2
10	09 14 10 098 90	seal	2.00	2
7	09 21 02 102 90	cap	1.00	2
9	04 21 34 077 00 90	nipple	2.00	2
5	04 31 20 062 10 90	plug	1.00	2
21	90 15 02 065 00 90	cartridge	1.00	2
15	90 12 12 218 00 90	base	1.00	2
1	09 31 20 003 90	plug	1.00	2
13	09 14 05 002 90	seal	2.00	2
11	90 23 01 045 00 90	back-flow preventer	2.00	2
18	90 30 30 027 00 90	screw	2.00	2
20	04 14 03 073 05 90	gasket kit	1.00	2