



- brass, lead free
- 2x back flow preventer
- Integrated supply stops
- 2x connections 3/4" (hot/cold)
- female thread 3/4" connection
- Thermostat cartridge
- Mud guard
- Water protection
- Sound insulation

Recommended article

Extension 1-1/8" -

12 177 970 90

Recommended article

Extension 1-3/4" -

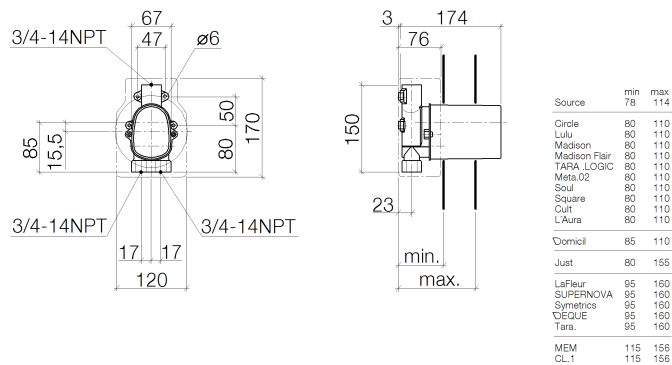
12 178 970 90



xTOOL Concealed thermostat rough -

SERIES-VARIOUS

35 517 970 Product version up to 5/12/2021

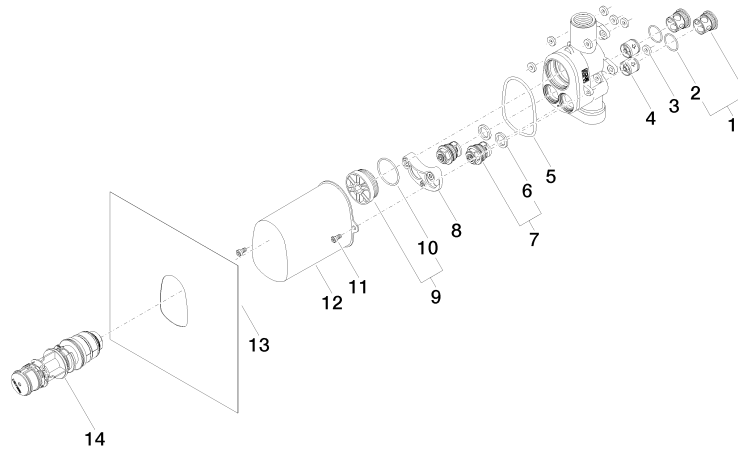


Codes & Standards

ASME A112.18.1 cUPC

Certificates and sustainability

IAPMO_4976 (



Spare parts list

Number	Item Number	Designation	Number of units	Lead time
8	90 12 12 218 00 90	base	1.00	2
2	09 14 10 098 90	seal	2.00	2
3	04 14 05 045 00 90	set	8.00	2
9	04 31 20 100 00 90	plug	1.00	2
12	09 21 02 103 90	cap	1.00	2
6	09 14 05 002 90	seal	2.00	2
7	90 29 05 031 00 90	insert	2.00	2
5	09 14 10 189 90	seal	1.00	2
10	09 14 10 111 90	seal	1.00	2
1	04 21 34 077 00 90	nipple	2.00	2
4	90 23 01 045 00 90	back-flow preventer	2.00	2
14	90 15 02 065 00 90	cartridge	1.00	2
13	04 14 03 073 04 90	gasket kit	1.00	2
11	90 30 30 027 00 90	screw	2.00	2