




35 547 970

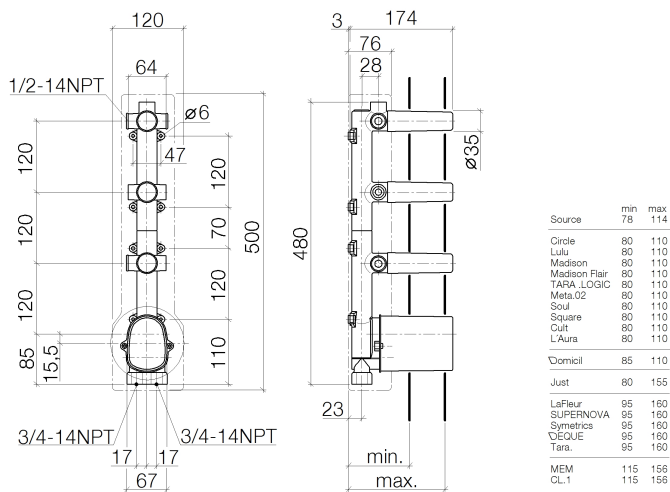
Product version up to 5/12/2021



- brass, lead free
- 2x back flow preventer
- Integrated supply stops
- 1/2" connection
- 2x connections 3/4" (hot/cold)
- Thermostat cartridge
- 2x Ceramic disc cartridge
- 3x Mud guard
- 2x Water protection
- Sound insulation
- Center to center 4-3/4"

Recommended article		Recommended article	
	<b>Extension 1-1/8" -</b>		<b>Extension 1-3/4" -</b>
	12 177 970 90		12 178 970 90

35 547 970    Product version up to 5/12/2021

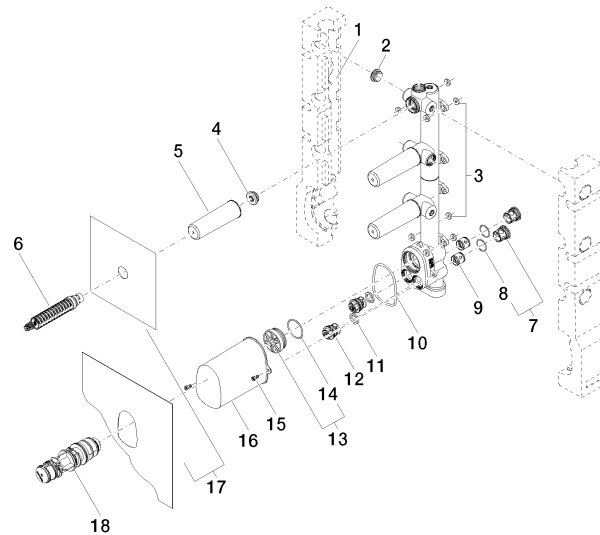


Codes & Standards

ASME A112.18.1      cUPC

Certificates and sustainability

IAPMO\_4976 (



## Spare parts list

Number	Item Number	Designation	Number of units	Lead time
2	04 31 20 062 10 90	plug	4.00	2
14	09 14 10 111 90	seal	1.00	2
3	04 14 05 045 00 90	set	1.00	2
7	04 21 34 077 00 90	nipple	2.00	2
16	09 21 02 103 90	cap	1.00	2
1	09 11 11 009 90	accessories	1.00	2
13	04 31 20 100 00 90	plug	1.00	2
9	90 23 01 045 00 90	back-flow preventer	2.00	2
4	04 31 20 006 00 90	plug	3.00	2
8	09 14 10 098 90	seal	2.00	2
6	90 90 03 143 00 90	top	3.00	2
11	09 14 05 002 90	seal	2.00	2
5	09 21 02 102 90	cap	3.00	2
18	90 15 02 065 00 90	cartridge	1.00	2
10	09 14 10 189 90	seal	1.00	2
17	04 14 03 073 07 90	gasket kit	1.00	2
15	90 30 30 027 00 90	screw	2.00	2
12	90 29 05 031 00 90	insert	2.00	2