

## Rough for volume control 1/2" -

---

35 607 970



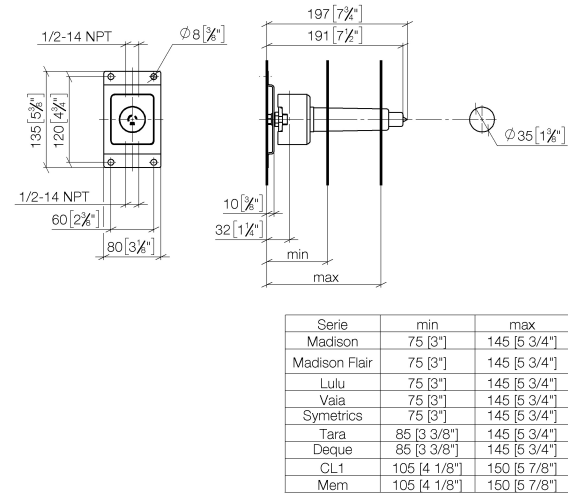
- brass, lead free
- female thread 1/2" connection
- 1x outlet 1/2"
- Mud guard
- Water protection
- Sound insulation
- suitable for xGRID (when using installation track + 1/2" recess depth)



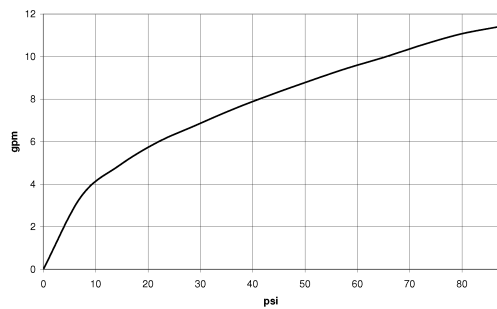
Rough for volume control 1/2" -

35 607 970

mm [inches]



Flow rate chart



Codes & Standards

|                |                                 |      |
|----------------|---------------------------------|------|
| ASME A112.18.1 | ASME<br>A112.18.1/CSA<br>B125.1 | cUPC |
|----------------|---------------------------------|------|



Rough for volume control 1/2" -

---

35 607 970

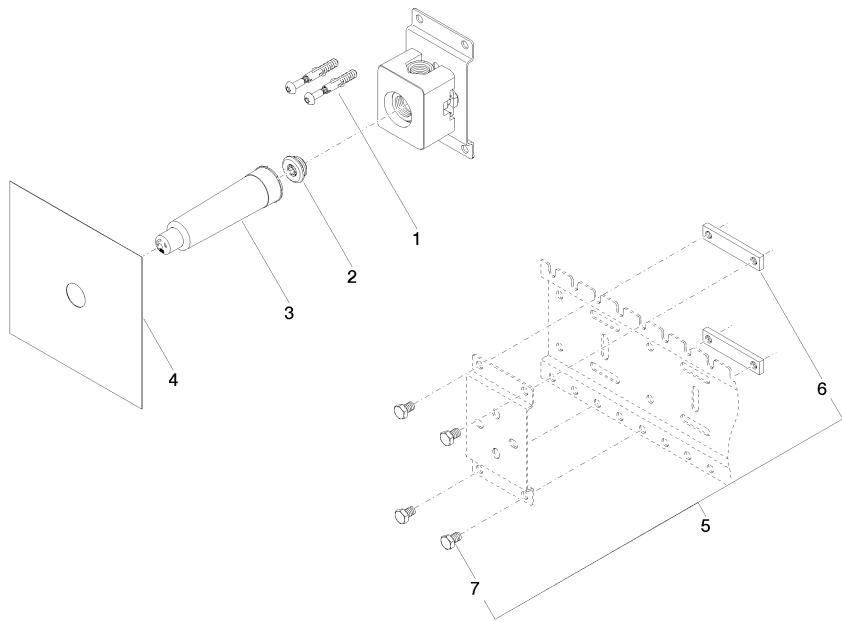
Certificates

---

IAPMO\_4976 (

# Rough for volume control 1/2" -

35 607 970



## Spare parts list

| Number | Item Number        | Designation | Number of units | Lead time |
|--------|--------------------|-------------|-----------------|-----------|
| 1      | 04 30 31 024 01 90 | fixing set  | 2               | 2         |
| 2      | 04 31 20 006 00 90 | plug        | 1               | 2         |
| 3      | 09 21 02 173 90    | cap         | 1               | 2         |
| 4      | 04 14 03 072 01 90 | gasket kit  | 1               | 2         |
| 5      | 04 17 20 100 00 90 | fixing set  | 1               | 2         |
| 6      | 09 17 20 100 90    | holder      | 2               | 60        |
| 7      | 09 30 30 152 90    | screw       | 4               | 2         |