



eSET Touchfree Lavatory faucet with temperature adjustment for wall-mounted installation - SERIES-VARIOUS

35 741 970



- lead-free
- 2x inlet 1/2"
- 2x back flow preventer
- 2x integrated supply stop
- Concealed installation
- Min. rough in depth 3-1/2"
- Max. rough in depth 4-7/8"

Compatible with outlets from Vaia, Lissé, CL.1, IMO, Tara., Tara Logic, Meta.02, Deque, Supernova, Symetrics, LULU and MEM

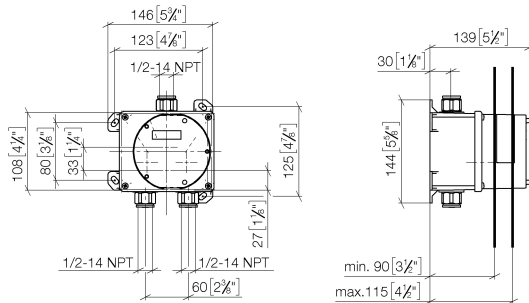
Not compatible with outlets with pull-rod drains.
Please use in combination with pop up drain 10 126 970-FF

Additional series and finishes available upon request (xtra Service)

ATTENTION: Separate terms and conditions for electronic articles are applicable.

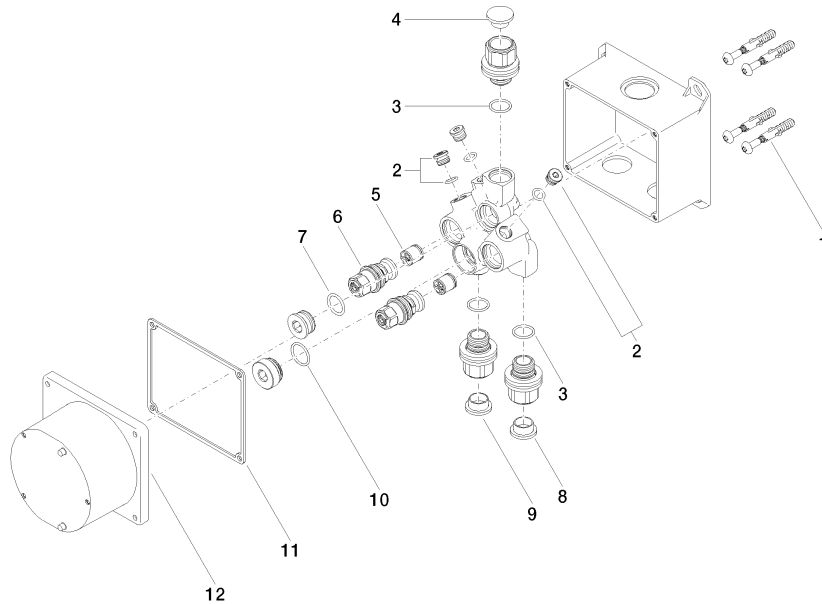
eSET Touchfree Lavatory faucet with temperature adjustment for wall-mounted SERIES-VARIOUS installation -

35 741 970
mm [inches]



eSET Touchfree Lavatory faucet with temperature adjustment for wall-mounted installation - SERIES-VARIOUS

35 741 970



Spare parts list

Number	Item Number	Designation	Number of units	Lead time
	10 09 14 10 031 90	seal	1.00	2
	12 09 11 11 011 90	lid	1.00	2
	9 09 31 20 093 90	plug	1.00	2
	7 09 14 10 117 90	seal	1.00	2
	4 09 31 20 092 90	plug	1.00	2
	6 04 29 05 031 01 90	insert	2.00	2
	5 90 23 01 040 00 90	back-flow preventer	2.00	2
	11 09 14 03 103 90	seal	1.00	2
	8 09 31 20 094 90	plug	1.00	2
	1 04 30 31 024 01 90	fixing set	2.00	2
	2 04 31 20 039 11 90	plug	3.00	2
	3 90 14 10 010 00 90	seal	3.00	2