

SERIES-VARIOUS AQUAHALO Installation rough - Champagne (22kt Gold)

35 750 970 Product version from 4/1/2024



- Rough parts
- Rain panel with 3 different spray types
- AQUACIRCLE RAIN: Circular rain curtain, flow rate max. 1.8 gpm (at 3 bar)
- TEMPEST RAIN: Natural rain, flow rate max. 1.8 gpm (at 3 bar)
- DIAMOND RAIN: Rain ring, flow rate max. 1.8 gpm (at 3 bar)
- Ceiling installation housing 23-7/8" x 23-7/8" x 3-3/4"
- Weight: 22 lbs
- Min. rough in depth 4-3/8"
- Max. rough in depth 5-7/8"

Separate LED Power supply

Input LED Power supply

- Input 100-240V AC 50-60Hz

Output LED Power supply

- 350mA (CC)

Output Specification LED Power supply

- SELV (Safety Extra Low Voltage)
- Class 2

Ceiling module power supply

- 350mA (CC)
- Connecting cable 27-1/2"


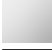



Spot lighting

- LED color temperature: approx. 3000 K
- Lights protected against splashing
- Includes lights rated at energy efficiency class
- Technology: LED, not dimmable
- Light switch not included

Environment

- Not suitable for outdoor use.
- Not suitable for use in a steam room.
- Not suitable for use in chlorinated or salty environments.
- Observe the regulations concerning protected zones specified in DIN VDE 0100, Part 701 (IEC 60364-7-701).

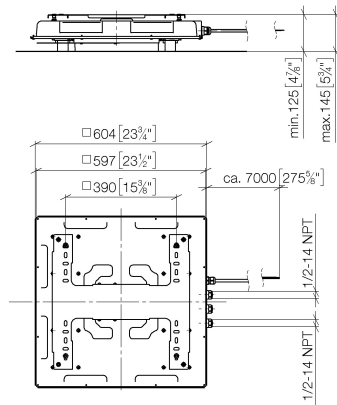
Pre-assembly kit for three-way diverter included

	Champagne (22kt Gold)	35 750 970-47 0010
	Chrome	35 750 970-00 0010
	Brushed Platinum	35 750 970-06 0010
	Matte Black	35 750 970-33 0010
	Brushed Champagne (22kt Gold)	35 750 970-46 0010

SERIES-VARIOUS AQUAHALO Installation rough - Champagne (22kt Gold)

35 750 970 Product version from 4/1/2024

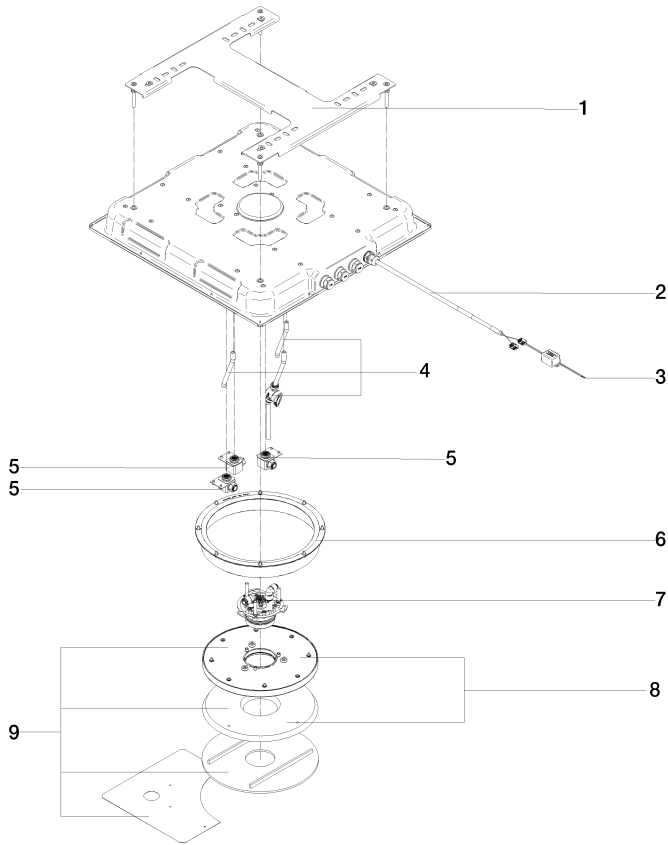
mm [inches] 1 : 10



SERIES-VARIOUS AQUAHALO Installation rough - Champagne (22kt Gold)

35 750 970 Product version from 4/1/2024

Parts for other
finishes can be found
here: [Chrome](#)



Spare parts list

Number	Item Number	Designation	Number of units	Lead time
1	90 17 20 287 02 90	flange	1	2
2	90 10 01 227 00 90	electronic accessories	1	2
3	90 10 01 257 00 90	electronic accessories	1	2
4	90 24 04 389 00 90	Flushing service kit	1	2
5	90 24 04 605 01 90	cartridge	3	2
6	90 21 02 439 00 90	Repair kit	1	-
Spare part can no longer be ordered, please order the replacement item				
7	90 17 09 062 16-47	Spray module Diamond Rain	1	30
8	90 31 20 071 00 90	rosette	1	2
9	90 91 42 097 00 90	Installation kit	1	-
Spare part can no longer be ordered, please order the replacement item				