



- Rough parts
- Flush-mounted reflection box 26-1/8" x 19" RAL 9003 signal white
- 2x female thread 1/2" connections
- Min. rough in depth 5-7/8"
- Max. rough in depth 23-1/4"
- Weight 33 lbs

Separate LED Power supply

Input LED Power supply

- Electrical connection: 100-240 V AC, 50-60 Hz, 20 watts

Output LED Power supply

- 24V DC (CV)

Output Specification LED Power supply

- SELV (Safety Extra Low Voltage)
- Class 2

Ceiling module power supply

- 24V DC (CV)
- Connecting cable 27-1/2"

Control

- ZigBee Light Link RGBW Controller
- To be provided by the customer: Zigbee Gateway

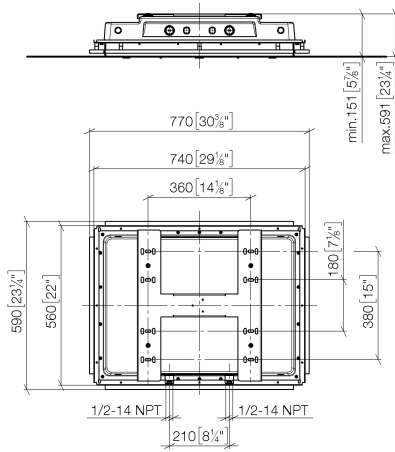
Environment

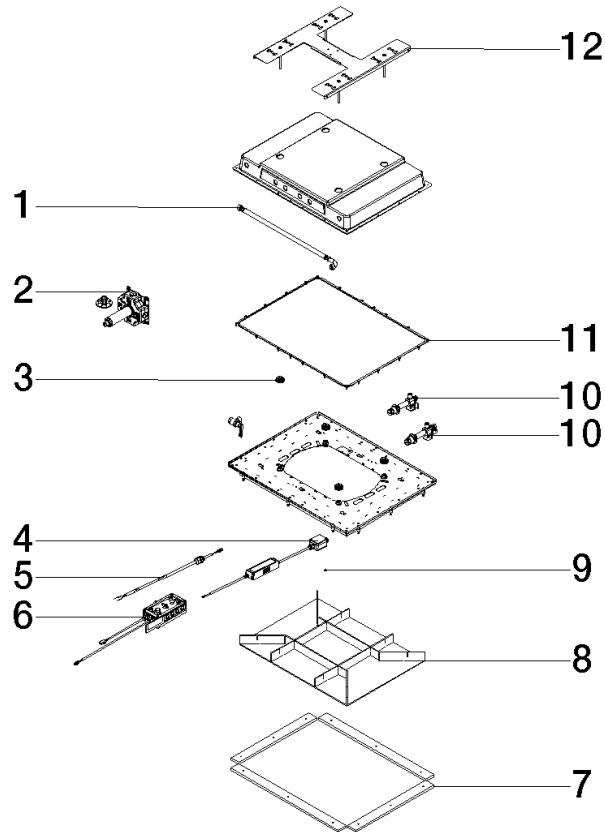
- Not suitable for outdoor use.
- Not suitable for use in a steam room.
- Not suitable for use in chlorinated or salty environments.
- Observe the regulations concerning protected zones specified in DIN VDE 0100, Part 701 (IEC 60364-7-701).
- Dornbracht recommends consulting a systems integrator.

Pre-assembly kit for three-way diverter included

35 771 970 Product version from 9/1/2024

mm [inches]





Spare parts list

Number	Item Number	Designation	Number of units	Lead time
7	90 18 30 020 00 90	sleeve	1.00	2
10	90 17 20 308 00 90	connection	2.00	2
9	91 30 30 194 00 90	screw	1.00	2
3	91 31 20 530 00 90	nipple set	1.00	2
11	90 14 03 194 00 90	seal	1.00	2
1	90 30 04 099 00 90	hose	1.00	2
12	90 17 20 304 00 90	holder	1.00	2
6	90 10 01 264 00 90	electronic accessories	1.00	2
2	90 17 01 263 00 90	diverter	1.00	2
5	90 10 01 228 00 90	electronic accessories	1.00	2
8	90 91 42 195 01 90	lid	1.00	2
4	90 10 01 262 00 90	electronic accessories	1.00	2