

## Rough for wall-mounted faucet -

SERIES-VARIOUS

35 860 970 Product version up to 11/11/2021



- brass, lead free
- 2x Connection 1/2" IT (cold/warm), DN 15
- 1x female thread 1/2" outlet for wall spout
- 1x outlet 1/2"
- 2x Mud guard
- Water protection
- Sound insulation
- Center to center 3-7/8"

Rough can be rotated to position the lever on top or to the left of the spout.

### Recommended article



**Extension 3/4" -** 12 869 970 90  
 •Not compatible with 36 86X 664-FF0010.  
 •Not for combination with exposed trim parts 36 86X 664-FF0010

### Recommended article



**Adapter for reversed water connections -** 12 880 970 90  
 •Not compatible with 36 86X 664-FF0010.

### Recommended article



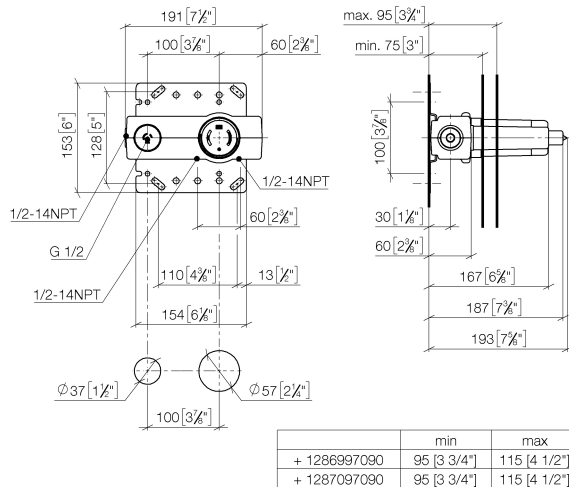
**Extension 3/4" -** 12 870 970 90  
 •Only for combination with exposed trim parts 36 86X 664-FF 0010.

## Rough for wall-mounted faucet -

SERIES-VARIOUS

35 860 970 Product version up to 11/11/2021

mm [inches]

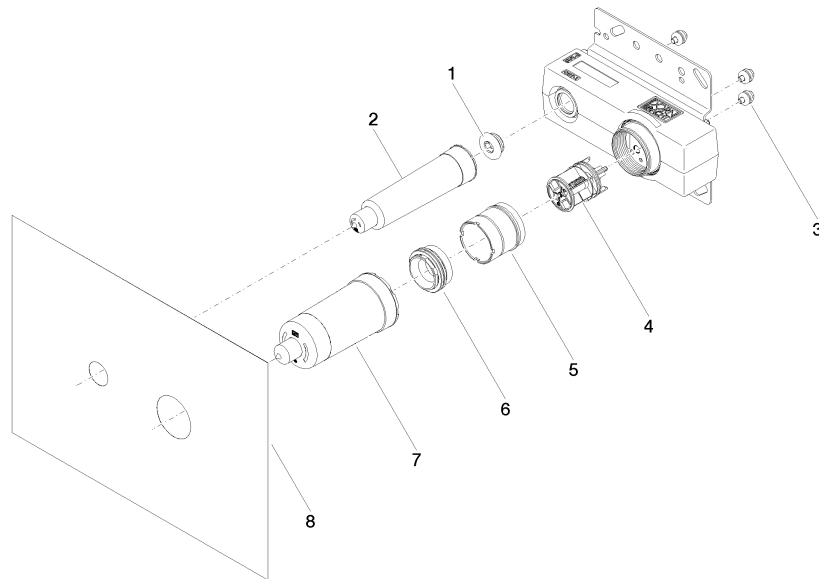


## Codes & Standards

ASME A112.18.1      cUPC      NSF372      NSF61

## Certificates and sustainability

IAPMO\_N-4976      IAPMO\_6397      IAPMO\_4976 (



## Spare parts list

Number	Item Number	Designation	Number of units	Lead time
4	90 31 20 107 00 90	plug	1.00	2
3	90 23 01 091 00 90	set	3.00	2
6	90 24 04 349 00 90	threaded connector	1.00	2
7	09 21 02 176 90	cap	1.00	60
1	04 31 20 006 00 90	plug	1.00	2
5	90 17 01 238 00 90	sleeve	1.00	2
8	04 14 03 074 01 90	gasket kit	1.00	2
2	09 21 02 173 90	cap	1.00	2