








MADISON Wall mounted two-way diverter - Chrome

MADISON

36 200 361    Product version from 4/1/2022



- Manual diverter
  - Flange diameter 2-3/8"
  - Includes BLANK porcelain insert
  - with integrated shut-off
- (ADA)**
- Does not allow for simultaneous use of functions**
- (ADA)
- Does not allow for simultaneous use of functions

	Chrome	36 200 361-00 0010
	Brushed Platinum	36 200 361-06 0010
	Platinum	36 200 361-08 0010
	Durabrand (23kt Gold)	36 200 361-09 0010
	Brushed Durabrand (23kt Gold)	36 200 361-28 0010
	Brushed Dark Brass	36 200 361-39 0010
	Brushed Dark Platinum	36 200 361-99 0010

Required article



- Wall mounted two-way diverter -**

35 202 970-90
- Min. rough in depth 3-3/8"
  - Max. rough in depth 6-1/8"

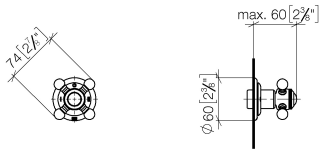


MADISON Wall mounted two-way diverter - Chrome

MADISON

36 200 361    Product version from 4/1/2022

mm [inches]

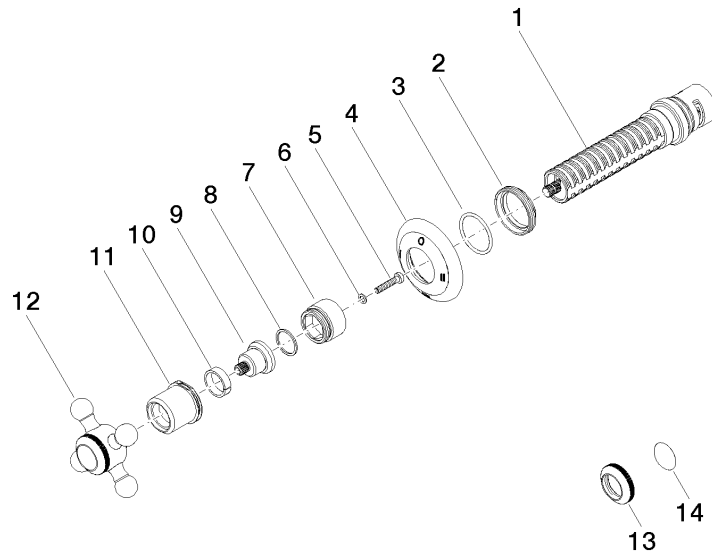


Codes & Standards

ADA	ASME A112.18.1	California Energy Commission (CEC)	cUPC
-----	----------------	------------------------------------	------

Certificates and sustainability

IAPMO\_4976 (



## Spare parts list

Number	Item Number	Designation	Number of units	Lead time
2	09 23 10 125-00	nut	1.00	10
1	90 90 03 306 10 90	diverter	1.00	2
14	09 26 01 016 90	accessories	1.00	2
4	09 27 36 103-00	rosette	1.00	60
12	04 20 36 100 02-00	handle	1.00	10
11	09 21 02 161-00	cover	1.00	10
9	09 12 12 064-00	base	1.00	10
13	09 20 36 005-00	handle	1.00	10
6	09 30 11 194 90	disc	1.00	2
7	09 18 30 007-00	sleeve	1.00	10
10	90 14 15 021 00 90	ring	1.00	2
8	90 28 10 030 00 90	ring	1.00	2
5	90 30 30 075 00 90	screw	1.00	2
3	90 14 10 063 00 90	seal	1.00	2