







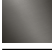

MADISON Wall mounted two-way diverter - Brushed Durabrass (23kt Gold)

MADISON

36 200 361    Product version from 4/1/2022



- Manual diverter
  - Flange diameter 2-3/8"
  - Includes BLANK porcelain insert
  - with integrated shut-off
- (ADA)**
- Does not allow for simultaneous use of functions**
- (ADA)
- Does not allow for simultaneous use of functions

	Brushed Durabrass (23kt Gold)	36 200 361-28 0010
	Chrome	36 200 361-00 0010
	Brushed Platinum	36 200 361-06 0010
	Platinum	36 200 361-08 0010
	Durabrass (23kt Gold)	36 200 361-09 0010
	Brushed Dark Platinum	36 200 361-99 0010

Required article



- Wall mounted two-way diverter -**    35 202 970-90
- Min. rough in depth 3-3/8"    0010
  - Max. rough in depth 6-1/8"

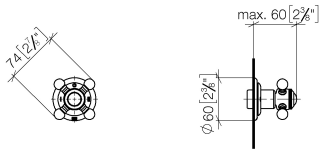


MADISON Wall mounted two-way diverter - Brushed Durabronss (23kt Gold)

MADISON

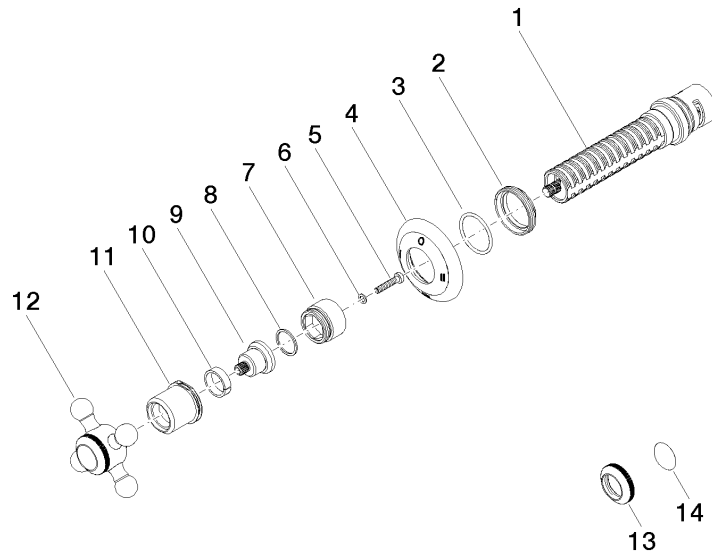
36 200 361 Product version from 4/1/2022

mm [inches]



Codes & Standards

ADA	California Energy Commission (CEC)
-----	--



## Spare parts list

Number	Item Number	Designation	Number of units	Lead time
4	09 27 36 103-28	rosette	1.00	60
14	09 26 01 016 90	accessories	1.00	2
6	09 30 11 194 90	disc	1.00	2
2	09 23 10 125-00	nut	1.00	10
1	90 90 03 306 10 90	diverter	1.00	2
7	09 18 30 007-28	sleeve	1.00	-
Spare part can no longer be ordered, please order the replacement item				
12	04 20 36 100 02-28	handle	1.00	20
13	09 20 36 005-28	handle	1.00	20
9	09 12 12 064-28	base	1.00	-
Spare part can no longer be ordered, please order the replacement item				
11	09 21 02 161-28	cover	1.00	20
5	90 30 30 075 00 90	screw	1.00	2
3	90 14 10 063 00 90	seal	1.00	2
10	90 14 15 021 00 90	ring	1.00	2
8	90 28 10 030 00 90	ring	1.00	2