



MADISON Wall mounted two-way diverter - Brushed Dark Brass

MADISON


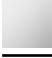





36 200 361 Product version from 4/1/2022



- Manual diverter
- Flange diameter 2-3/8"
- Includes BLANK porcelain insert
- with integrated shut-off

(ADA)

Does not allow for simultaneous use of functions

	Brushed Dark Brass	36 200 361-39 0010
	Chrome	36 200 361-00 0010
	Brushed Platinum	36 200 361-06 0010
	Platinum	36 200 361-08 0010
	Durabrass (23kt Gold)	36 200 361-09 0010
	Brushed Durabrass (23kt Gold)	36 200 361-28 0010
	Brushed Dark Platinum	36 200 361-99 0010

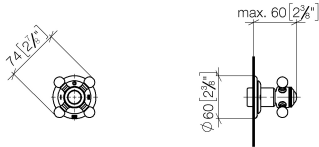


MADISON Wall mounted two-way diverter - Brushed Dark Brass

MADISON

36 200 361 Product version from 4/1/2022

mm [inches]

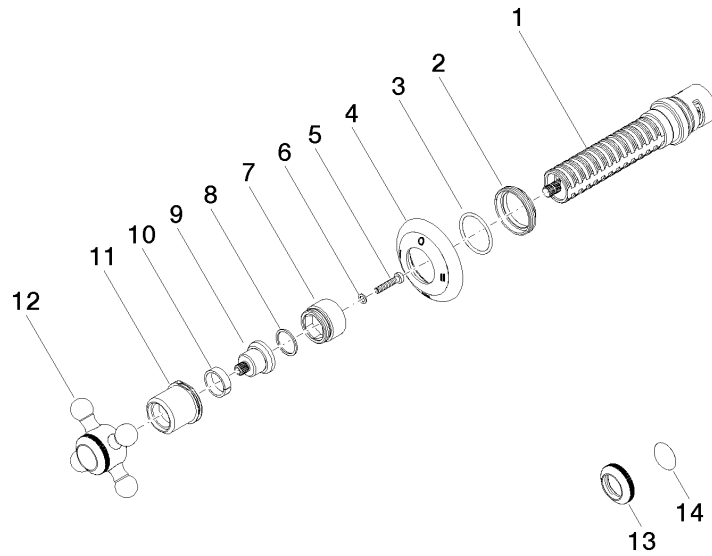


Codes & Standards

ADA	California Energy Commission (CEC)
-----	--

36 200 361 Product version from 4/1/2022

Parts for other
finishes can be found
here: [Chrome](#)





MADISON Wall mounted two-way diverter - Brushed Dark Brass

MADISON

36 200 361 Product version from 4/1/2022

Spare parts list

Number	Item Number	Designation	Number of units	Lead time
7	09 18 30 007-39	sleeve	1.00	-
Spare part can no longer be ordered, please order the replacement item				
14	09 26 01 016 90	accessories	1.00	2
8	90 28 10 030 00 90	ring	1.00	2
12	04 20 36 100 02-39	handle	1.00	-
Spare part can no longer be ordered, please order the replacement item				
4	09 27 36 103-39	rosette	1.00	-
Spare part can no longer be ordered, please order the replacement item				
2	09 23 10 125-39	nut	1.00	-
Spare part can no longer be ordered, please order the replacement item				
1	90 90 03 306 10 90	diverter	1.00	2
5	90 30 30 075 00 90	screw	1.00	2
11	09 21 02 161-39	cover	1.00	-
Spare part can no longer be ordered, please order the replacement item				
10	90 14 15 021 00 90	ring	1.00	2
6	09 30 11 194 90	disc	1.00	2
13	09 20 36 005-39	handle	1.00	-
Spare part can no longer be ordered, please order the replacement item				
9	09 12 12 064-39	base	1.00	-
Spare part can no longer be ordered, please order the replacement item				
3	90 14 10 063 00 90	seal	1.00	2