

## META Wall mounted two-way diverter - Brushed Platinum

META

36 200 661 Product version from 4/1/2022



- Manual diverter
- Handle Ø 2-3/8"
- with integrated shut-off

(ADA)

**Does not allow for simultaneous use of functions**

(ADA)

Does not allow for simultaneous use of functions

	Brushed Platinum	36 200 661-06 0010
	Chrome	36 200 661-00 0010
	Light gold	36 200 661-26 0010
	Brushed Light Gold	36 200 661-27 0010
	Matte Black	36 200 661-33 0010
	Brushed Dark Brass	36 200 661-39 0010
	Brushed Bronze	36 200 661-42 0010
	Brushed Champagne (22kt Gold)	36 200 661-46 0010
	Champagne (22kt Gold)	36 200 661-47 0010
	Brushed Chrome	36 200 661-93 0010
	Brushed Dark Platinum	36 200 661-99 0010

### Required article



- Wall mounted two-way diverter -** 35 202 970-90  
 •Max. rough in depth 6-1/4" 0010  
 •Min. rough in depth 4-1/2"

mm [inches]

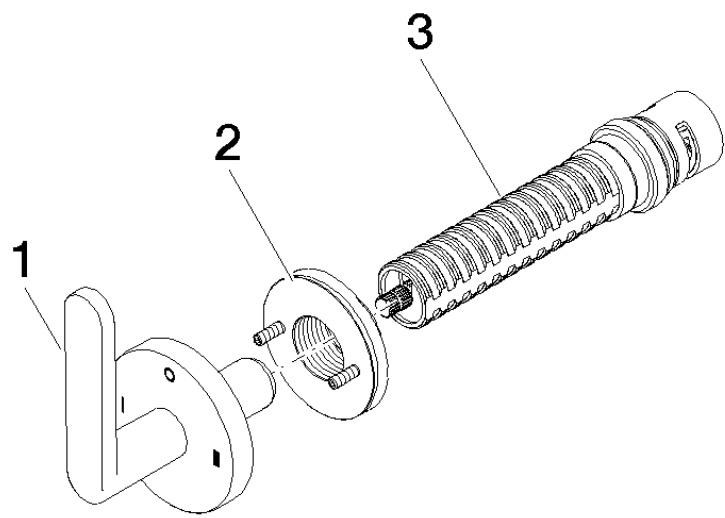


Codes & Standards

ADA	ASME A112.18.1	California Energy Commission (CEC)	cUPC
-----	----------------	--	------

Certificates and sustainability

IAPMO\_4976 (



Spare parts list

Number	Item Number	Designation	Number of units	Lead time
2	90 21 02 181 00 90	disc	1.00	2
1	90 20 66 014 01-06	handle	1.00	10
3	90 90 03 306 10 90	diverter	1.00	2