

META Wall mounted two-way diverter - Light gold

META

36 200 661 Product version from 4/1/2022



- Manual diverter
- Without flange
- Handle Ø 2-3/8"
- with integrated shut-off (ADA)

Does not allow for simultaneous use of functions

(ADA)

Does not allow for simultaneous use of functions

| | | |
|------------------------------------------------------------------------------------|-------------------------------|--------------------|
|  | Light gold | 36 200 661-26 0010 |
|  | Chrome | 36 200 661-00 0010 |
|  | Brushed Platinum | 36 200 661-06 0010 |
|  | Brushed Light Gold | 36 200 661-27 0010 |
|  | Matte Black | 36 200 661-33 0010 |
|  | Brushed Bronze | 36 200 661-42 0010 |
|  | Brushed Champagne (22kt Gold) | 36 200 661-46 0010 |
|  | Champagne (22kt Gold) | 36 200 661-47 0010 |
|  | Brushed Chrome | 36 200 661-93 0010 |
|  | Brushed Dark Platinum | 36 200 661-99 0010 |

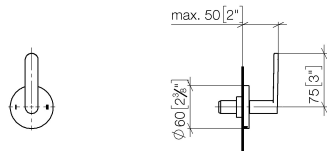
Required article



- Wall mounted two-way diverter -** 35 202 970-90
•Min. rough in depth 4-1/2" 0010
•Max. rough in depth 6-1/4"

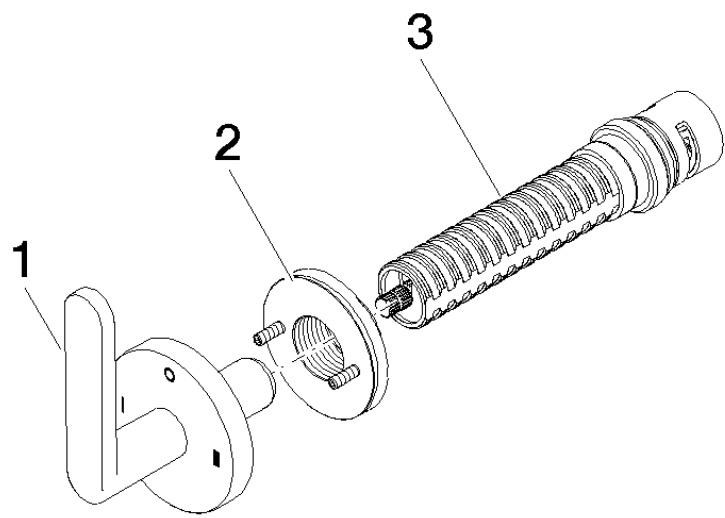
36 200 661 Product version from 4/1/2022

mm [inches]



Codes & Standards

| | |
|-----|------------------------------------------|
| ADA | California Energy Commission (CEC) |
|-----|------------------------------------------|



Spare parts list

| Number | Item Number | Designation | Number of units | Lead time |
|--------|--------------------|-------------|-----------------|-----------|
| 2 | 90 21 02 181 00 90 | disc | 1.00 | 2 |
| 1 | 90 20 66 014 01-26 | handle | 1.00 | 30 |
| 3 | 90 90 03 306 10 90 | diverter | 1.00 | 2 |