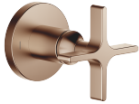




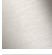




VAIA Wall mounted two-way diverter - Brushed Bronze

VAIA

36 200 809    Product version from 4/1/2022



- Manual diverter
- Flange diameter 2-3/8"
- with integrated shut-off  
**(ADA)**  
**Does not allow for simultaneous use of functions**  
  
(ADA)  
Does not allow for simultaneous use of functions

	Brushed Bronze	36 200 809-42 0010
	Chrome	36 200 809-00 0010
	Brushed Platinum	36 200 809-06 0010
	Dark Chrome	36 200 809-19 0010
	Brushed Durabronze (23kt Gold)	36 200 809-28 0010
	Brushed Dark Brass	36 200 809-39 0010
	Brushed Dark Platinum	36 200 809-99 0010

Required article



- Wall mounted two-way diverter -**    35 202 970-90  
•Min. rough in depth 3-3/8"            0010  
•Max. rough in depth 6-1/4"

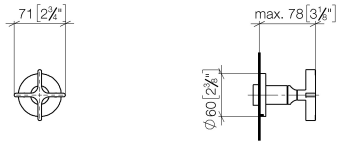


VAIA Wall mounted two-way diverter - Brushed Bronze

VAIA

36 200 809    Product version from 4/1/2022

mm [inches]

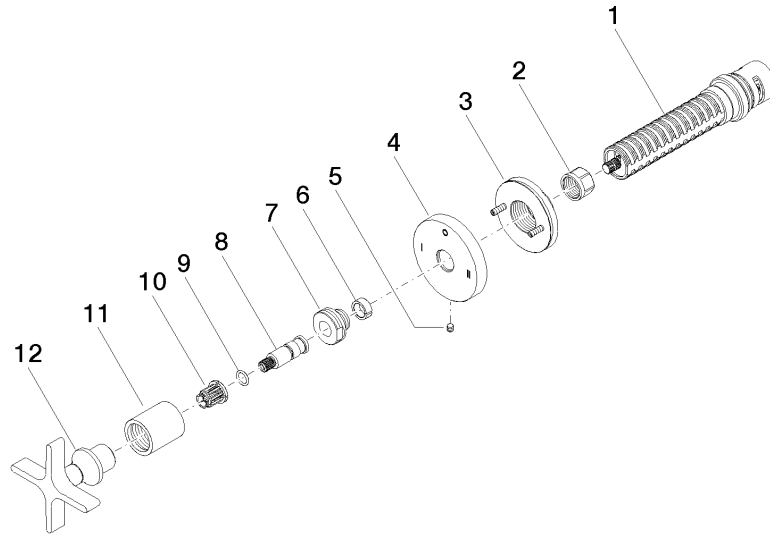


Codes & Standards

ADA	ASME A112.18.1	California Energy Commission (CEC)	cUPC
-----	----------------	------------------------------------	------

Certificates and sustainability

IAPMO\_4976 (



## Spare parts list

Number	Item Number	Designation	Number of units	Lead time
3	90 21 02 181 00 90	disc	1.00	2
8	09 29 06 022 90	spindle	1.00	2
7	09 24 05 002 90	nipple	1.00	2
12	90 20 80 014 01-42	handle	1.00	20
11	09 21 02 070-42	cover	1.00	60
5	09 31 11 294 90	pin	1.00	2
4	09 27 89 120-42	rosette	1.00	60
2	90 23 30 023 00 90	nut	1.00	2
6	90 14 15 020 03 90	ring	1.00	2
9	90 14 10 060 00 90	seal	1.00	2
10	90 12 12 002 00 90	fixing cap	1.00	2
1	90 90 03 306 10 90	diverter	1.00	2