

## TARA Wall mounted two-way diverter - Chrome

TARA

36 200 882 Product version from 4/1/2022



- Manual diverter
  - Flange 2-3/8"
  - with integrated shut-off  
(ADA)
- Does not allow for simultaneous use of functions**
- (ADA)
- Does not allow for simultaneous use of functions

|  |                                     |                    |
|--|-------------------------------------|--------------------|
|   | Chrome                              | 36 200 882-00 0010 |
|   | Brushed Platinum                    | 36 200 882-06 0010 |
|   | Platinum                            | 36 200 882-08 0010 |
|   | Dark Chrome                         | 36 200 882-19 0010 |
|   | Brushed Durabronze<br>(23kt Gold)   | 36 200 882-28 0010 |
|   | Matte Black                         | 36 200 882-33 0010 |
|   | Brushed Bronze                      | 36 200 882-42 0010 |
|   | Brushed<br>Champagne (22kt<br>Gold) | 36 200 882-46 0010 |
|   | Champagne (22kt<br>Gold)            | 36 200 882-47 0010 |
|   | Brushed Chrome                      | 36 200 882-93 0010 |
|  | Brushed Dark<br>Platinum            | 36 200 882-99 0010 |

### Required article



- Wall mounted two-way diverter -** 35 202 970-90
- Max. rough in depth 6-1/4" 0010
  - Min. rough in depth 3-3/8"

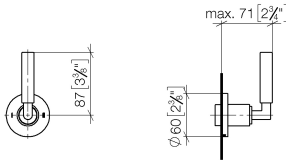


TARA Wall mounted two-way diverter - Chrome

TARA

36 200 882    Product version from 4/1/2022

mm [inches]

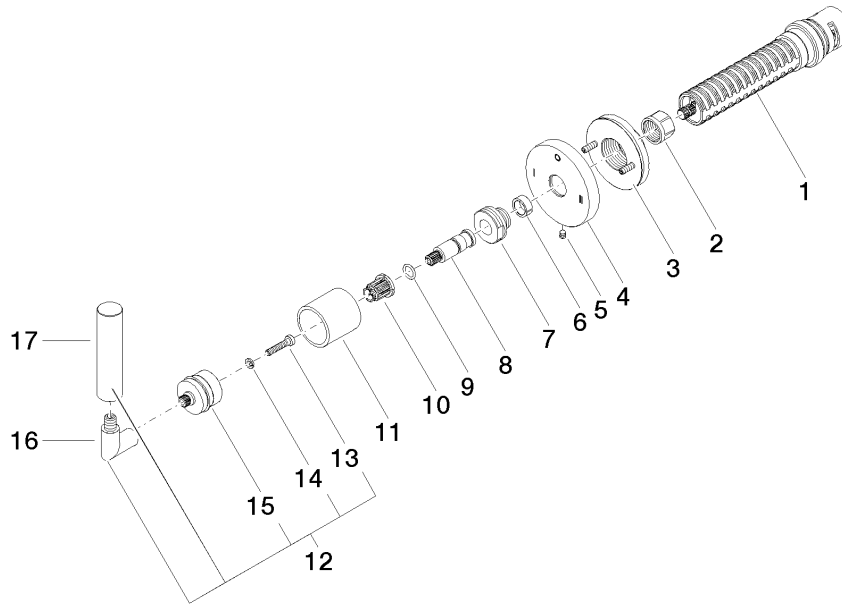


Codes & Standards

|     |                |                                    |      |
|-----|----------------|------------------------------------|------|
| ADA | ASME A112.18.1 | California Energy Commission (CEC) | cUPC |
|-----|----------------|------------------------------------|------|

Certificates and sustainability

IAPMO\_4976 (



## Spare parts list

| Number | Item Number        | Designation | Number of units | Lead time |
|--------|--------------------|-------------|-----------------|-----------|
| 3      | 90 21 02 181 00 90 | disc        | 1.00            | 2         |
| 1      | 90 90 03 306 10 90 | diverter    | 1.00            | 2         |
| 11     | 09 21 02 144-00    | sleeve      | 1.00            | 10        |
| 15     | 90 12 12 219 00-00 | base        | 1.00            | 10        |
| 5      | 09 31 11 294 90    | pin         | 1.00            | 2         |
| 8      | 09 29 06 022 90    | spindle     | 1.00            | 2         |
| 7      | 09 24 05 002 90    | nipple      | 1.00            | 2         |
| 16     | 04 18 20 022 00-00 | angle       | 1.00            | 10        |
| 10     | 90 12 12 002 00 90 | fixing cap  | 1.00            | 2         |
| 17     | 09 20 88 052-00    | handle      | 1.00            | 10        |
| 12     | 04 20 88 052 10-00 | handle      | 1.00            | 10        |
| 4      | 09 27 89 120-00    | rosette     | 1.00            | 60        |
| 14     | 90 30 11 029 00 90 | disc        | 1.00            | 2         |
| 9      | 90 14 10 060 00 90 | seal        | 1.00            | 2         |
| 2      | 90 23 30 023 00 90 | nut         | 1.00            | 2         |
| 13     | 90 30 30 075 00 90 | screw       | 1.00            | 2         |
| 6      | 90 14 15 020 03 90 | ring        | 1.00            | 2         |