

TARA Wall mounted two-way diverter - Brushed Platinum

TARA

36 200 882 Product version from 4/1/2022



- Manual diverter
- Flange 2-3/8"
- with integrated shut-off

(ADA)

Does not allow for simultaneous use of functions

(ADA)

Does not allow for simultaneous use of functions

	Brushed Platinum	36 200 882-06 0010
	Chrome	36 200 882-00 0010
	Platinum	36 200 882-08 0010
	Dark Chrome	36 200 882-19 0010
	Brushed Durabronze (23kt Gold)	36 200 882-28 0010
	Matte Black	36 200 882-33 0010
	Brushed Bronze	36 200 882-42 0010
	Brushed Champagne (22kt Gold)	36 200 882-46 0010
	Champagne (22kt Gold)	36 200 882-47 0010
	Brushed Chrome	36 200 882-93 0010
	Brushed Dark Platinum	36 200 882-99 0010

Required article



- Wall mounted two-way diverter -** 35 202 970-90
 •Max. rough in depth 6-1/4" 0010
 •Min. rough in depth 3-3/8"

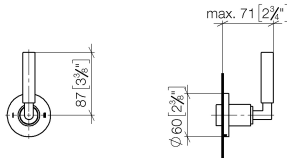


TARA Wall mounted two-way diverter - Brushed Platinum

TARA

36 200 882 Product version from 4/1/2022

mm [inches]

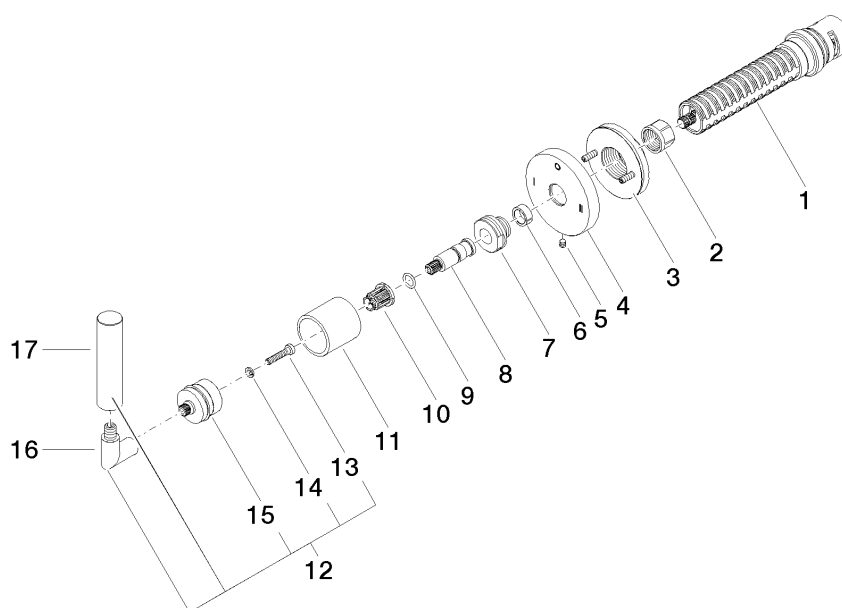


Codes & Standards

ADA	ASME A112.18.1	California Energy Commission (CEC)	cUPC
-----	----------------	------------------------------------	------

Certificates and sustainability

IAPMO_4976 (



Spare parts list

Number	Item Number	Designation	Number of units	Lead time
15	90 12 12 219 00-06	base	1.00	10
8	09 29 06 022 90	spindle	1.00	2
12	04 20 88 052 10-06	handle	1.00	10
16	04 18 20 022 00-06	angle	1.00	10
3	90 21 02 181 00 90	disc	1.00	2
1	90 90 03 306 10 90	diverter	1.00	2
4	09 27 89 120-06	rosette	1.00	60
7	09 24 05 002 90	nipple	1.00	2
5	09 31 11 294 90	pin	1.00	2
17	09 20 88 052-06	handle	1.00	10
10	90 12 12 002 00 90	fixing cap	1.00	2
11	09 21 02 144-06	sleeve	1.00	10
9	90 14 10 060 00 90	seal	1.00	2
2	90 23 30 023 00 90	nut	1.00	2
6	90 14 15 020 03 90	ring	1.00	2
13	90 30 30 075 00 90	screw	1.00	2
14	90 30 11 029 00 90	disc	1.00	2