

TARA Wall mounted two-way diverter - Brushed Bronze

TARA

36 200 892 Product version from 4/1/2022



- Manual diverter
- Flange 2-3/8"
- with integrated shut-off

(ADA)

Does not allow for simultaneous use of functions

	Brushed Bronze	36 200 892-42 0010
	Chrome	36 200 892-00 0010
	Brushed Platinum	36 200 892-06 0010
	Platinum	36 200 892-08 0010
	Brushed Durabronze (23kt Gold)	36 200 892-28 0010
	Matte Black	36 200 892-33 0010
	Brushed Champagne (22kt Gold)	36 200 892-46 0010
	Champagne (22kt Gold)	36 200 892-47 0010
	Brushed Chrome	36 200 892-93 0010
	Brushed Dark Platinum	36 200 892-99 0010



TARA Wall mounted two-way diverter - Brushed Bronze

TARA

36 200 892 Product version from 4/1/2022

mm [inches]



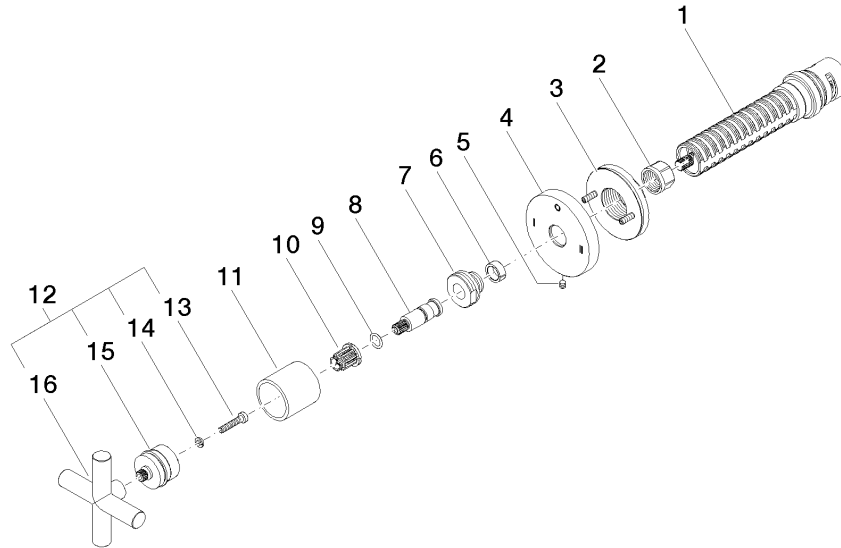
Codes & Standards

ADA	ASME A112.18.1	California Energy Commission (CEC)	cUPC
-----	----------------	------------------------------------	------

Certificates and sustainability

IAPMO_4976 (

Parts for other
finishes can be found
here: [Chrome](#)



Spare parts list

Number	Item Number	Designation	Number of units	Lead time
1	90 90 03 306 10 90	diverter	1.00	2
6	90 14 15 020 03 90	ring	1.00	2
14	90 30 11 029 00 90	disc	1.00	2
10	90 12 12 002 00 90	fixing cap	1.00	2
5	09 31 11 294 90	pin	1.00	2
2	90 23 30 023 00 90	nut	1.00	2
15	90 12 12 219 00-42	base	1.00	30
11	09 21 02 144-42	sleeve	1.00	60
3	90 21 02 181 00 90	disc	1.00	2
4	09 27 89 120-42	rosette	1.00	60
9	90 14 10 060 00 90	seal	1.00	2
12	90 20 89 010 10-42	handle	1.00	30
16	09 20 89 010-42	handle	1.00	30
13	90 30 30 075 00 90	screw	1.00	2
7	09 24 05 002 90	nipple	1.00	2
8	09 29 06 022 90	spindle	1.00	2