







MADISON Wall mounted three-way diverter - Chrome

36 210 361 Product version from 4/1/2022



- Manual diverter
 - Flange diameter 2-3/8"
 - Includes BLANK porcelain insert
 - with integrated shut-off
- (ADA)**
- Does not allow for simultaneous use of functions**
- (ADA)
- Does not allow for simultaneous use of functions

	Chrome	36 210 361-00 0010
	Brushed Platinum	36 210 361-06 0010
	Platinum	36 210 361-08 0010
	Durabrass (23kt Gold)	36 210 361-09 0010
	Brushed Durabrass (23kt Gold)	36 210 361-28 0010
	Brushed Dark Platinum	36 210 361-99 0010

Required article



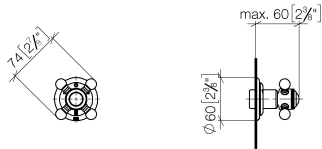
- Wall mounted three-way diverter -** 35 203 970-90
- Min. rough in depth " 0010
 - Max. rough in depth "



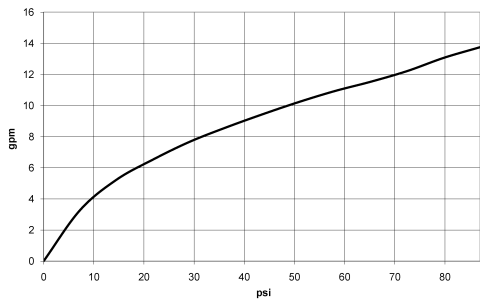
MADISON Wall mounted three-way diverter - Chrome

36 210 361 Product version from 4/1/2022

mm [inches]



Flow rate chart



Codes & Standards

ASME A112.18.1	California Energy Commission (CEC)	cUPC
----------------	------------------------------------	------



MADISON Wall mounted three-way diverter - Chrome

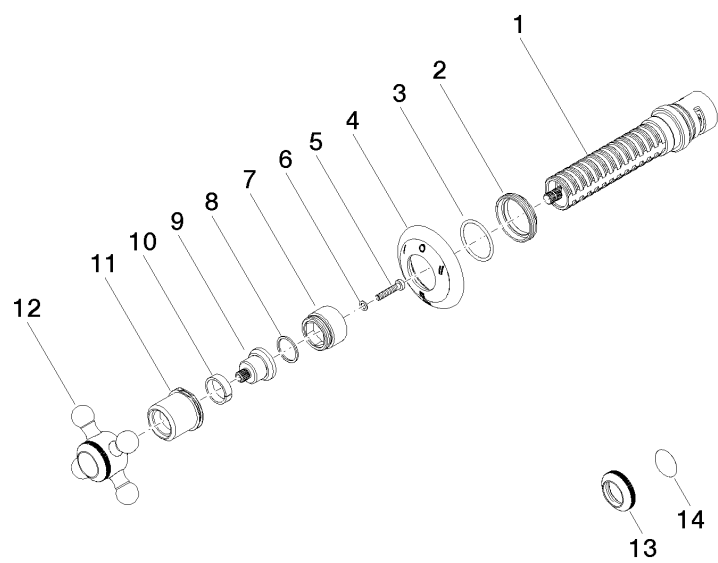
36 210 361 Product version from 4/1/2022

Certificates

IAPMO_4976 (

MADISON Wall mounted three-way diverter - Chrome

36 210 361 Product version from 4/1/2022



Spare parts list

Number	Item Number	Designation	Number of units	Lead time
1	90 90 03 305 10 90	diverter	1	2
2	09 23 10 125-00	nut	1	10
3	90 14 10 063 00 90	seal	1	2
4	09 27 36 104-00	rosette	1	60
5	90 30 30 075 00 90	screw	1	2
6	09 30 11 194 90	disc	1	2
7	09 18 30 007-00	sleeve	1	10
8	90 28 10 030 00 90	ring	1	2
9	09 12 12 064-00	base	1	10
10	90 14 15 021 00 90	ring	1	2
11	09 21 02 161-00	cover	1	10
12	04 20 36 100 02-00	handle	1	10
13	09 20 36 005-00	handle	1	10
14	09 26 01 016 90	accessories	1	2