




META Wall mounted three-way diverter - Brushed Platinum

META

36 210 661 Product version from 4/1/2022



- Manual diverter
 - Handle Ø 2-3/8"
- (ADA)**
Does not allow for simultaneous use of functions
(ADA)
Does not allow for simultaneous use of functions

	Brushed Platinum	36 210 661-06 0010
	Chrome	36 210 661-00 0010
	Light gold	36 210 661-26 0010
	Brushed Light Gold	36 210 661-27 0010
	Matte Black	36 210 661-33 0010
	Brushed Dark Brass	36 210 661-39 0010
	Brushed Bronze	36 210 661-42 0010
	Brushed Champagne (22kt Gold)	36 210 661-46 0010
	Brushed Chrome	36 210 661-93 0010
	Brushed Dark Platinum	36 210 661-99 0010

Required article



- Wall mounted three-way diverter -** 35 203 970-90
•Max. rough in depth 6-1/4" 0010
•Min. rough in depth 4-1/2"

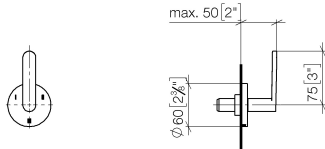


META Wall mounted three-way diverter - Brushed Platinum

META

36 210 661 Product version from 4/1/2022

mm [inches]

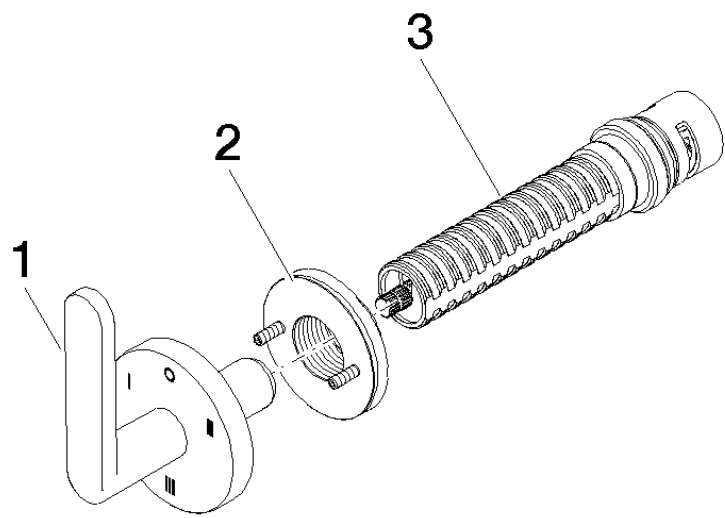


Codes & Standards

ADA	ASME A112.18.1	California Energy Commission (CEC)	cUPC
-----	----------------	------------------------------------	------

Certificates and sustainability

IAPMO_4976 (



Spare parts list

Number	Item Number	Designation	Number of units	Lead time
3	90 90 03 305 10 90	diverter	1.00	2
1	90 20 66 014 03-06	handle	1.00	10
2	90 21 02 181 00 90	disc	1.00	2