





LULU Wall mounted three-way diverter - Chrome

36 210 710    Product version from 4/1/2022



- Manual diverter
  - Flange 2-3/8" x 3-1/8"
  - with integrated shut-off
- (ADA)**
- Does not allow for simultaneous use of functions**
- (ADA)
- Does not allow for simultaneous use of functions

	Chrome	36 210 710-00 0010
	Brushed Platinum	36 210 710-06 0010

Required article

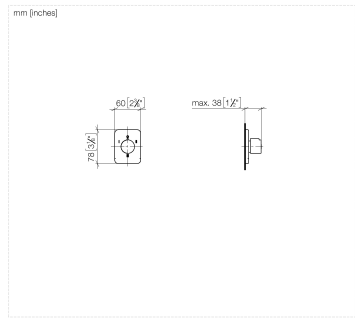


- Wall mounted three-way diverter -** 35 203 970-90
- Max. rough in depth " 0010
  - Min. rough in depth "

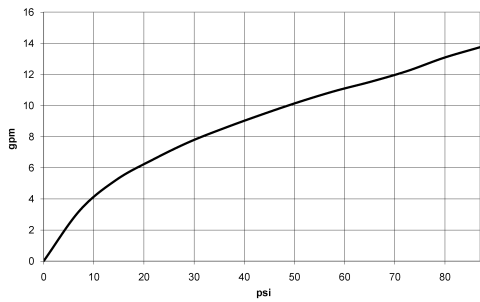


# LULU Wall mounted three-way diverter - Chrome

36 210 710    Product version from 4/1/2022



## Flow rate chart



## Codes & Standards

ASME A112.18.1	California Energy Commission (CEC)	cUPC
----------------	------------------------------------	------



## LULU Wall mounted three-way diverter - Chrome

---

36 210 710 Product version from 4/1/2022

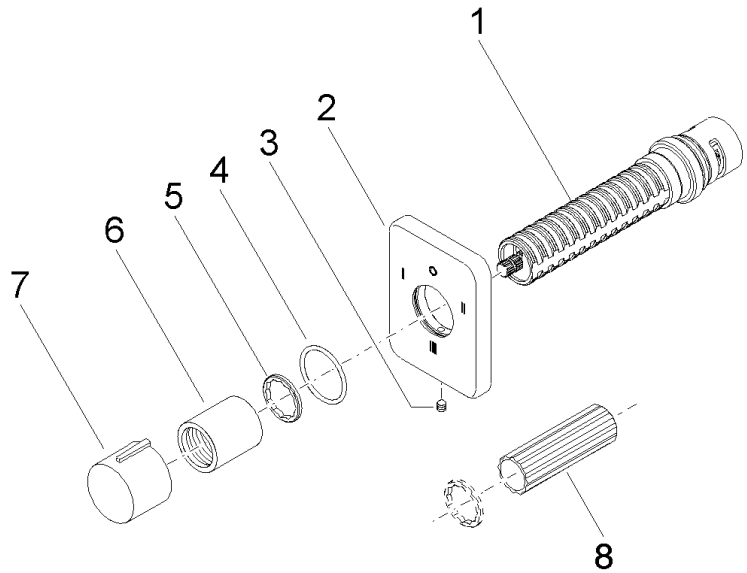
### Certificates

---

IAPMO\_4976 (

**LULU Wall mounted three-way diverter - Chrome**

36 210 710 Product version from 4/1/2022



**Spare parts list**

Number	Item Number	Designation	Number of units	Lead time
1	90 90 03 305 10 90	diverter	1	2
2	09 27 71 117-00	rosette	1	60
3	90 31 11 007 00 90	pin	1	2
4	90 14 10 063 00 90	seal	1	2
5	09 16 01 025 90	ring	1	2
6	09 21 02 070-00	cover	1	10
7	09 20 97 030-00	handle	1	10
8	90 30 09 010 00 90	key	1	2