

TARA Wall mounted three-way diverter - Brushed Bronze

36 210 882 Product version from 4/1/2022



- Manual diverter
- Flange 2-3/8"
- with integrated shut-off

(ADA)

Does not allow for simultaneous use of functions

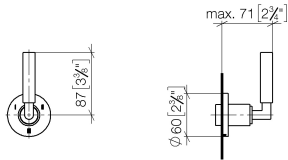
| | | |
|--|-------------------------------------|--------------------|
|  | Brushed Bronze | 36 210 882-42 0010 |
|  | Chrome | 36 210 882-00 0010 |
|  | Brushed Platinum | 36 210 882-06 0010 |
|  | Platinum | 36 210 882-08 0010 |
|  | Brushed Durabrass (23kt Gold) | 36 210 882-28 0010 |
|  | Matte Black | 36 210 882-33 0010 |
|  | Brushed Champagne (22kt Gold) | 36 210 882-46 0010 |
|  | Champagne (22kt Gold) | 36 210 882-47 0010 |
|  | Brushed Chrome | 36 210 882-93 0010 |
|  | Brushed Dark Platinum | 36 210 882-99 0010 |



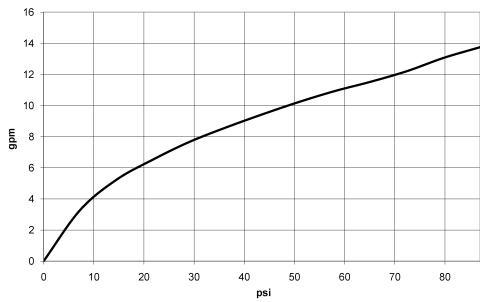
TARA Wall mounted three-way diverter - Brushed Bronze

36 210 882 Product version from 4/1/2022

mm [inches]



Flow rate chart



Codes & Standards

| | | |
|----------------|--|------|
| ASME A112.18.1 | California Energy Commission (CEC) | cUPC |
|----------------|--|------|



TARA Wall mounted three-way diverter - Brushed Bronze

36 210 882 Product version from 4/1/2022

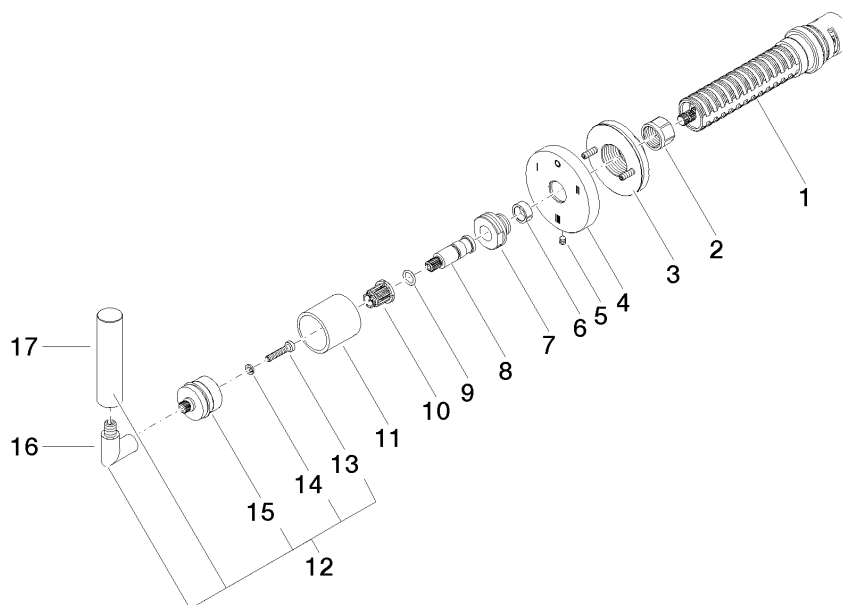
Certificates

IAPMO_4976 (

TARA Wall mounted three-way diverter - Brushed Bronze

36 210 882 Product version from 4/1/2022

Parts for other
finishes can be found
here: [Chrome](#)



Spare parts list

| Number | Item Number | Designation | Number of units | Lead time |
|--|--------------------|-------------|-----------------|-----------|
| 1 | 90 90 03 305 10 90 | diverter | 1 | 2 |
| 2 | 90 23 30 023 00 90 | nut | 1 | 2 |
| 3 | 90 21 02 181 00 90 | disc | 1 | 2 |
| 4 | 09 27 89 119-42 | rosette | 1 | 60 |
| 5 | 09 31 11 294 90 | pin | 1 | 2 |
| 6 | 90 14 15 020 03 90 | ring | 1 | 2 |
| 7 | 09 24 05 002 90 | nipple | 1 | 2 |
| 8 | 09 29 06 022 90 | spindle | 1 | 2 |
| 9 | 90 14 10 060 00 90 | seal | 1 | 2 |
| 10 | 90 12 12 002 00 90 | fixing cap | 1 | 2 |
| 11 | 09 21 02 144-42 | sleeve | 1 | 60 |
| 12 | 04 20 88 052 10-42 | handle | 1 | 60 |
| 13 | 90 30 30 075 00 90 | screw | 1 | 2 |
| 14 | 90 30 11 029 00 90 | disc | 1 | 2 |
| 15 | 90 12 12 219 00-42 | base | 1 | 30 |
| 16 | 04 18 20 022 00-42 | angle | 1 | - |
| Spare part can no longer be ordered, please order the replacement item | | | | |
| 17 | 09 20 88 052-42 | handle | 1 | 60 |