

TARA Wall mounted three-way diverter - Brushed Champagne (22kt Gold)

36 210 882 Product version from 4/1/2022



- Manual diverter
 - Flange 2-3/8"
 - with integrated shut-off

(ADA)

Does not allow for simultaneous use of functions

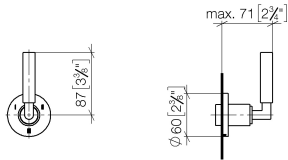
	Brushed Champagne (22kt Gold)	36 210 882-46 0010
	Chrome	36 210 882-00 0010
	Brushed Platinum	36 210 882-06 0010
	Platinum	36 210 882-08 0010
	Brushed Durabronze (23kt Gold)	36 210 882-28 0010
	Matte Black	36 210 882-33 0010
	Brushed Bronze	36 210 882-42 0010
	Champagne (22kt Gold)	36 210 882-47 0010
	Brushed Chrome	36 210 882-93 0010
	Brushed Dark Platinum	36 210 882-99 0010



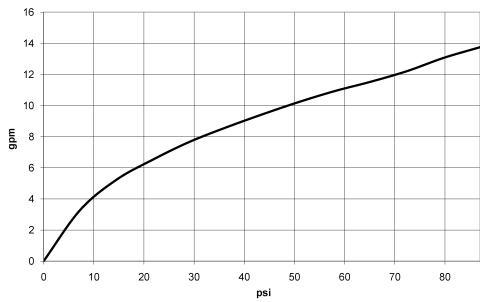
TARA Wall mounted three-way diverter - Brushed Champagne (22kt Gold)

36 210 882 Product version from 4/1/2022

mm [inches]



Flow rate chart



Codes & Standards

ASME A112.18.1	California Energy Commission (CEC)	cUPC
----------------	------------------------------------	------



TARA Wall mounted three-way diverter - Brushed Champagne (22kt Gold)

36 210 882 Product version from 4/1/2022

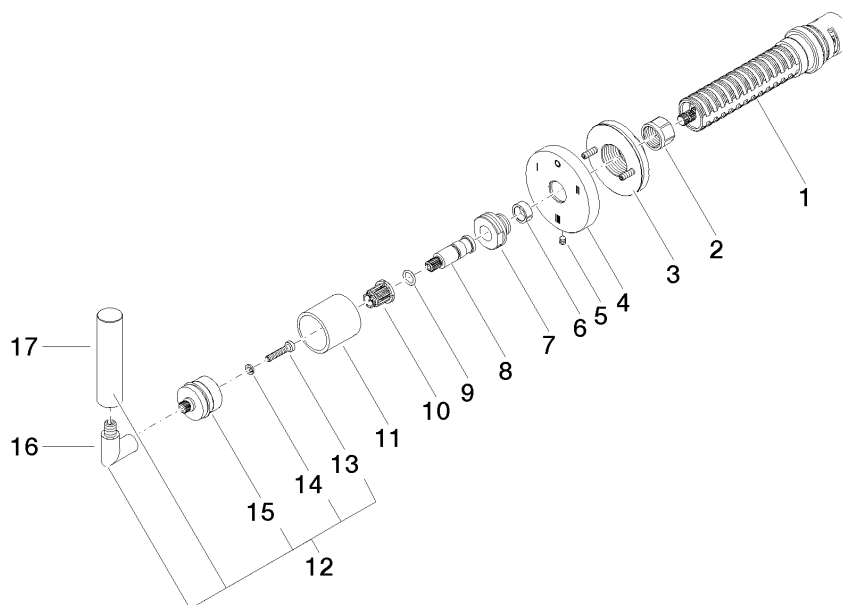
Certificates

IAPMO_4976 (

TARA Wall mounted three-way diverter - Brushed Champagne (22kt Gold)

36 210 882 Product version from 4/1/2022

Parts for other
finishes can be found
here: [Chrome](#)



Spare parts list

Number	Item Number	Designation	Number of units	Lead time
1	90 90 03 305 10 90	diverter	1	2
2	90 23 30 023 00 90	nut	1	2
3	90 21 02 181 00 90	disc	1	2
4	09 27 89 119-46	rosette	1	60
5	09 31 11 294 90	pin	1	2
6	90 14 15 020 03 90	ring	1	2
7	09 24 05 002 90	nipple	1	2
8	09 29 06 022 90	spindle	1	2
9	90 14 10 060 00 90	seal	1	2
10	90 12 12 002 00 90	fixing cap	1	2
11	09 21 02 144-46	sleeve	1	60
12	04 20 88 052 10-46	handle	1	60
13	90 30 30 075 00 90	screw	1	2
14	90 30 11 029 00 90	disc	1	2
15	90 12 12 219 00-46	base	1	30
16	04 18 20 022 00-46	angle	1	-
Spare part can no longer be ordered, please order the replacement item				
17	09 20 88 052-46	handle	1	30